

Audio Visual

Reference Guide

2012/2013


Save Time Visuals

audio visual solutions



1300 658 986

www.digitalsignagemelbourne.com.au

| www.savetimevisuals.com.au

LET US TAKE YOUR VISION AND MAKE IT AN AFFORDABLE REALITY

Dear Valued Customer,

Thanks to your continued support, Save Time Visuals is a growing success story, and is now one of the leading Audio Visual companies in Australia. Recent trends in advertising technology have seen us branch out into our new division; Digital Signage Melbourne.

One phone call to Save Time Visuals will connect you with a trained professional who will assist you in achieving the best solution for your budget. Our trained professional Audio Visual Experts can design, install and advise on equipment to suit your individual situation, now and into the future. From small boardrooms to convention centres and lecture theatres, our team can help you create anything.

Our team have designed systems for churches, heritage listed buildings, new constructions and multi-use venues

Our commitment to customer care and after-sales service is backed up by our Life Time Warranty on our installations.

Our range of products we have to offer is ever expanding. Please take a look through this reference catalogue, have a read of our Case Studies and take advantage of our expert knowledge by arranging for a consultant to visit you today, we are just a phone call away.

REPAIRS AND SERVICE CENTRE

Prompt Repairs of:

- Multimedia Projectors
- Portable PA Systems
- Other Audio Visual Equipment

MAINTENANCE PROGRAM

- 1, 2 and 3 year Projector Maintenance plans available
- Discounted projector lamps
- Relief machine for emergencies
- Telephone help desk

EQUIPMENT FOR HIRE

- Multimedia Projectors
- Plasma/LCD Display
- Lecterns
- P.A. Systems



OUR ONLY LIMIT IS YOUR IMAGINATION!

MISSION STATEMENT

Save Time Visuals aims to be an innovative leader in the Audio Visual industry. We strive to meet and exceed our client's expectation. It is our policy to invest in the training of our staff in order to deliver cutting edge solutions and provide quality customer service.



Address: Unit 13, 45 Normanby Road
Notting Hill VIC
Australia 3168
Telephone: 1300 658 986

Email: savetime@savetime.net.au

CONTENTS

6 Digital Signage and
LCD/Plasma Displays

19 Interactive Products

29 Projectors and Screens

41 Control Systems

47 Audio and Video Conferencing

50 Audio Equipment

60 Presentation Furniture

63 Whiteboards

66 Glossary and Terms

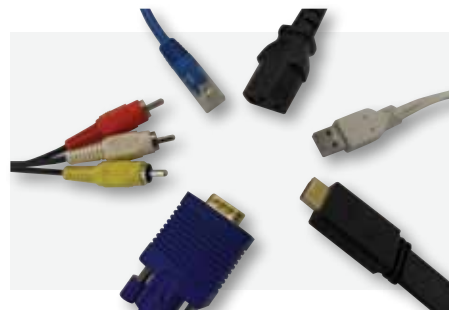
REPLACEMENT LAMPS



WALL PLATES



CABLES



READY TO SWITCH ON THE POWER OF DIGITAL SIGNAGE?

DIGITAL MEDIA **DIGITAL SIGNAGE NETWORK**

Electronic Signage

DYNAMIC SIGNAGE *Digital Signs*

Out-of-home Media Network

In-store TV Network
Narrow Casting Network
Active Signage
Digital Media Advertising
Network
Interactive Communications

MAKE DIGITAL SIGNAGE PART OF YOUR 2012!

Make an Impression - Portray your message with eye catching visual content, viewable in so many different ways!

Simply put, Digital Signage is the alternative to Static Signage, Posters, Notice Boards and Menu Boards. We're talking about electronically

distributed messaging that is changing the way you advertise to, communicate with and influence your target audience. It consists of a network of displays (from 1 to 1000) showing advertising, time tables, photos of school events, announcements or menus. These screens can be controlled via your existing computer network, allowing you update your content with the click of a mouse.



LOOKING FOR A DYNAMIC AND EFFECTIVE WAY TO REACH YOUR AUDIENCE?

Remember in high school having to read a faded photocopy of the time table pinned on the notice board?

Would you prefer live information screen at the entrance to your lobby, displaying special events, notices, directory and information about your business.

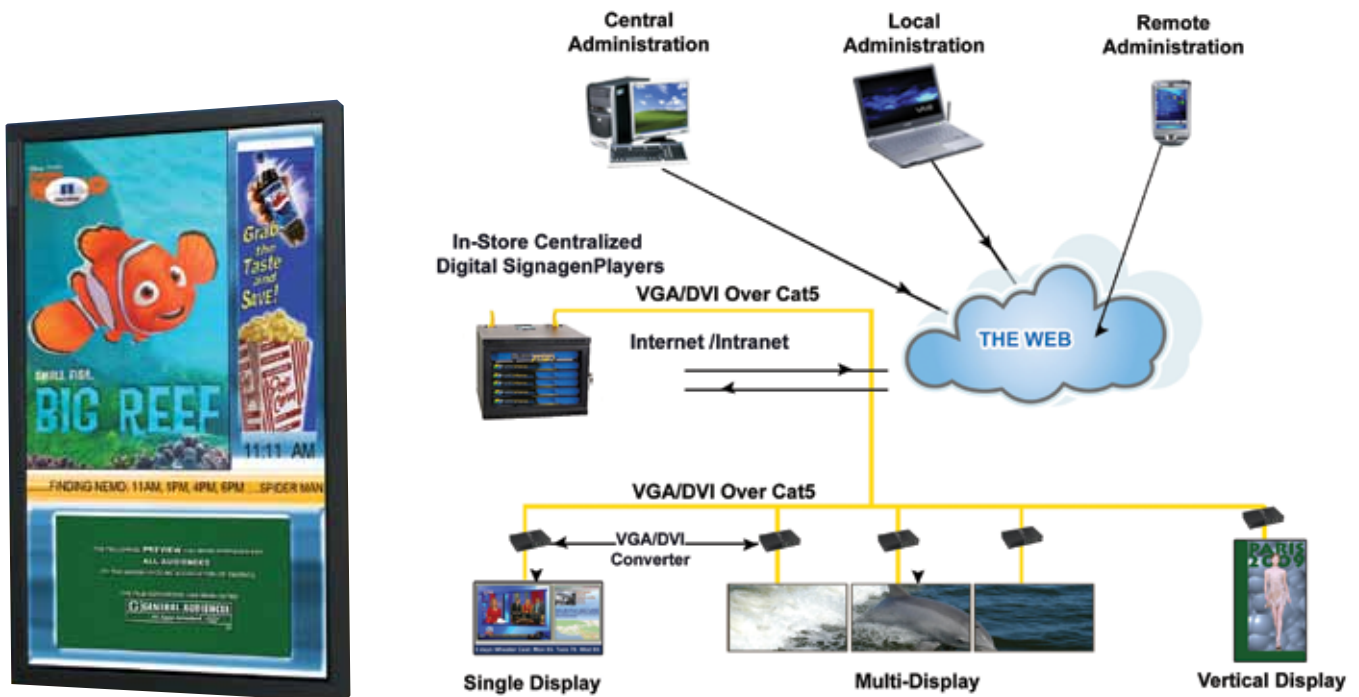
Scrolling presentations allow you to display a variety of content on the one screen and update your display anytime. Even RSS feeds or Scrolling Text Messages and Evacuation Announcements can be used.

Incorporate a touch screen and your clients can choose what they need to see next - maybe browsing library catalogues, selecting products or accessing the timetable for a particular room.

In today's fast paced world, research has shown that static notice boards and signs just don't have the impact they used to. Digital Signage gets noticed! – Offering a myriad of opportunities to capture the attention of your staff, students, visitors or patrons! A flexible and engaging alternative to traditional printed signage.

Who needs it?

Industries: Education, Hospitality, Retail, Churches, Medical, Waiting Rooms, Foyers, Corporate, Train Stations, Football Stadiums, Airports, Factory Floor, Car Dealership, Schools and TAFEs,



DIGITAL SIGNAGE

NEC

NEC LIVE is a suite of Windows-based applications that allow you to create compelling content, then schedule and distribute that content across small or large scale networks of display panels



NEC LIVE Artist: Create attention grabbing content including movies, text, pictures and external feeds such as RSS feeds. Simple drag and drop software with advanced special effects, including preview feature.



NEC LIVE Player: Manage playback of scheduled content at each display location.



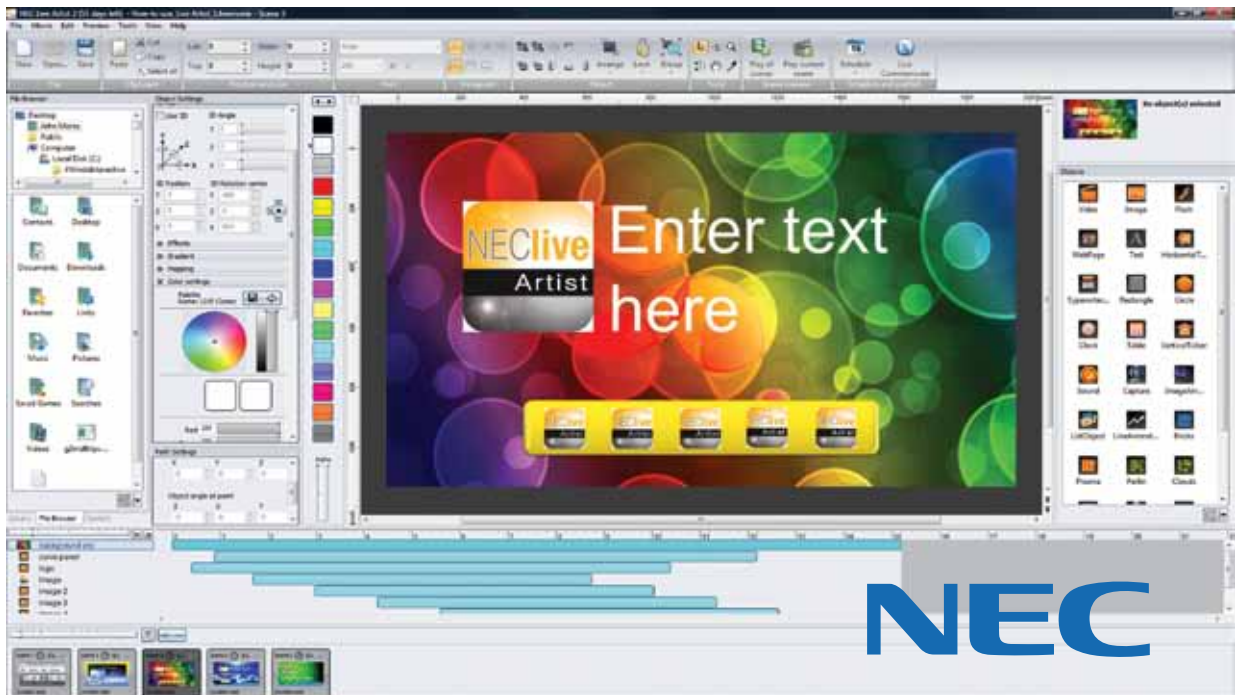
NEC LIVE Update: Automatically manage updates to scheduled content and refresh the players at a chosen location.



NEC LIVE Communicate: Distribute update and add new content to remote or local displays with this simple to use software.



NEC LIVE Enterprise: For keeping track of what is happening in your Digital Signage network.



LET YOUR SAVE TIME VISUALS CONSULTANT DESIGN A PACKAGE TO SUIT YOUR NEEDS

Digital Signage Melbourne 
A division of Save Time Visuals

Visit www.digitalsignagemelbourne.com.au for more information

Samsung MagicInfo Digital Signage

A better way to get your point across

Obtain the power to display all your messages from a single source with MagicInfo.



Let a Save Time Visuals consultant show you how we can create eye-catching displays.



Screens can be mounted portrait or landscape, to best display your message...



Samsung's Ultra-Thin Bezel screens are perfect for a video wall up to 10 screens wide, and 10 screens high!

Digital Signage Melbourne 
A division of Save Time Visuals

Visit www.digitalsignagemelbourne.com.au for more information

DIGITAL SIGNAGE

SPINETIX

DIGITAL SIGNAGE HARDWARE



Technical Data

Spinetix Hyper Media Player HMP100



- Horizontal and vertical digital displays
- Video walls & Interactive displays
- Very low power consumption
- HDMI and VGA connectors
- Internal storage
- RS232 interface for multi-purpose I/O
- Ethernet network connectivity
- Digital & analogue audio
- Suitable for tough environments
- Cost effective, without expensive recurring license fees

Introduction

The HMP100™ is the unique alternative to proprietary, PC based solutions for digital signage. With the HMP100, SpinetiX© offers a new and simplified way to schedule, combine, update, stream and display content. Whether it be audio, video, vector graphics, pictures, or text; the HMP100 allows for simple and cost effective implementations for applications as wide-ranging as advertising, transportation, hospitality, finance, and live events.

Features

Small & Robust

The HMP100 stands out with its amazingly compact size. You can hide it nearly anywhere. The HMP100 is exceptionally robust and especially well suited for harsh environments thanks to the fanless design and the absence of any moving hardware parts.

Time Synchronised

All HMP100 devices on the network are time synchronized and work together seamlessly. Video walls of any size can be created and managed with ease.

Open

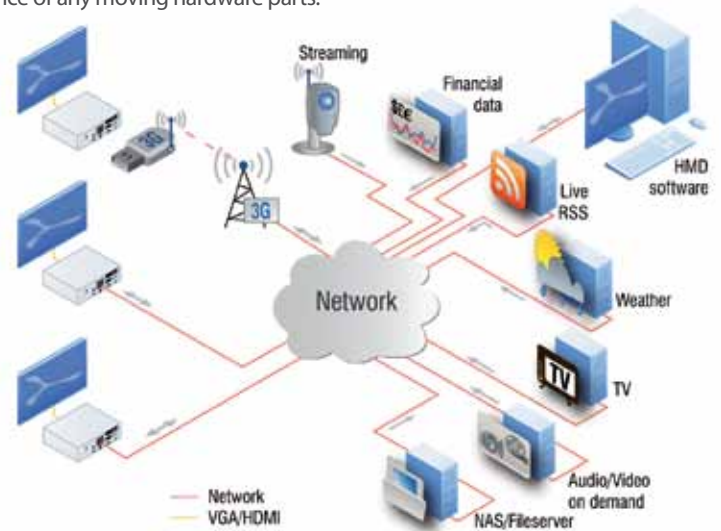
The digital signage solution of SpinetiX is based on open protocols and formats. As a result, with standard web based skills and freely available technologies, integration is straightforward and cost effective.

Green

The power consumption of a HMP100 in action is only 2W. That's 50x less than a typical digital signage PC, which uses around 100W!

Serverless & Standalone

The HMP100's do not require a proprietary server. So with SpinetiX, you will never have to pay expensive recurring license fees.



HMP200 also available, for High Definition

Digital Signage Melbourne 
A division of Save Time Visuals

Visit www.digitalsignagemelbourne.com.au for more information



DVC Digital Signage has been specifically designed for education and can be used for a variety of purposes...

- Informing staff and students of sports cancellations.
- Requesting a staff member attend the office
- Emergency alerts
- Break time alerts
- Digital PA System
- Principal announcements (both audio and video) and much more...

DVC allows you to create dramatic, eye catching content and instantly add content to provide up to date information. This content can be sent to any Plasma, TV, PC, Laptop or IWB.

- Send scrolling text messages
- Schedule content to be sent at a particular time/date
- Create zones to send to individual displays
- Break time alerts
- Turn display devices on/off automatically when content is sent (regardless of make or model)

The DVC System is a complete technology solution rather than simply addressing one requirement or issue. DVC is a digital signage system, but provides so much more with the added technologies.



Principal Cam

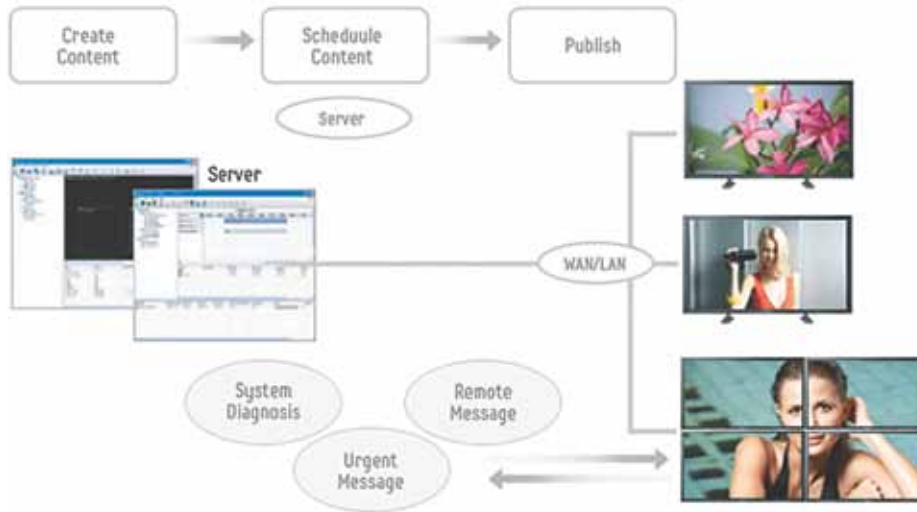
Use a digital or analogue camera housed on the principal's desk to send an audio and video announcement without having to leave their office.

This audio and video feed will either appear on targeted display devices or on every laptop, PC, TV and Interactive Whiteboard around your school

LCD AND PLASMA PANELS

SAMSUNG

SamsungID Video Wall Solution



Supports 40" and 46" UX series Professional LCD Panels Each UX Matrix stand can hold up to 4 panels high, giving you a free standing video wall of almost 3 metres. Create eye catching displays by changing your configuration

Various Video Wall Configuration

Basic (3x3)



Stair



Rectangle



Pyramid



Circular



Digital Signage Melbourne 
A division of Save Time Visuals

Visit www.digitalsignagemelbourne.com.au for more information

WHEN WE'RE TALKING DIGITAL SIGNAGE IT'S ALL ABOUT YOUR MESSAGE!

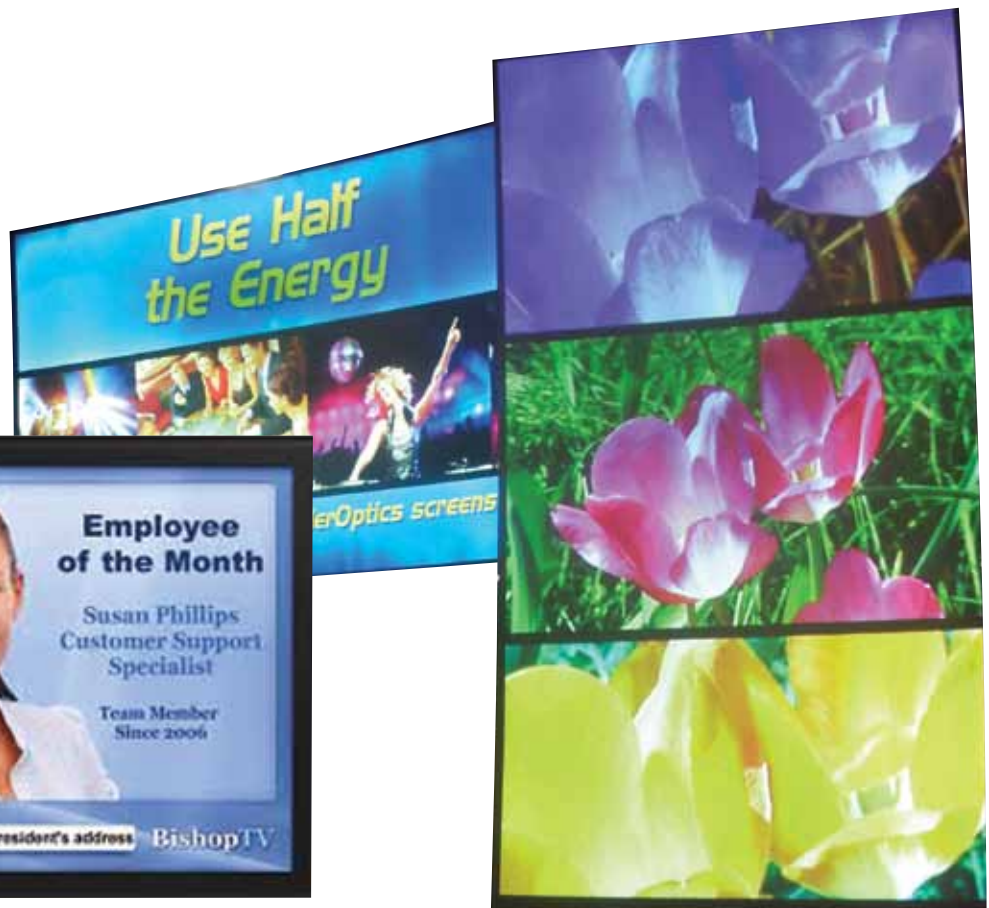
You can have fabulous huge screens with impressive software, but the content is what makes the system come alive...

Save Time Visuals can help you with an End to End design solution – Our trained consultants can provide you with advice on which system will suit your needs, supply all the hardware to achieve your goals and budget, as well as create content for you, all prepared with the end result in mind.

What can you be displayed?

- Entertainment
- Merchandising and Advertising
- Announcements
- Special offers
- Menus
- Statistics
- Building maps
- Safety messages

And more, the possibilities are endless.



Let Save Time Visuals show you how - Book an obligation free consultation today

LCD AND PLASMA PANELS

SAMSUNG

Samsung powerful, professional display solutions

Designed for versatility, Samsung LFD monitors provide a versatile range of functions and features that enable them to perform to perfection, anywhere. Indoors, outdoors, stand-alone or in a video wall, they are created to allow you to choose how, where, and what you want to display.



Enquire about Samsung Magicinfo Digital Signage System

Log onto www.samsunglfd.com for further detailed information

PDP Plasma Series Economical Solution

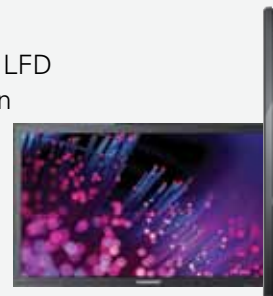
- Powerful functionality
- Increased connectivity
- 6-way anti burn-in protection
- High Definition Multimedia Interface
- Vertical image capability



EX series ECO Solution

The world's slimmest LED LFD

- Represents the evolution of digital displays
- 30% less power than previous models
- Full HD images



UT-2 series Super Narrow Video Wall Solution (Premium)



- 2.4 mm & 4.3 mm = 6.7 mm bezel to bezel
- Ultimate multi-display environment.
- Ultra-high resolution image
- 700cd/m2 brightness

UX-3 series Video Wall Solution (Economy)

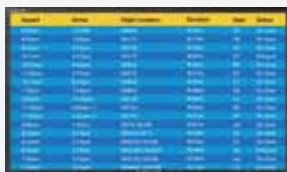


- Use alone or as part of a multi-display environment
- Optional PC embedded with 40GB of storage
- Built in speakers
- 11mm bezel enables a seamless video wall

DX series 24/7 Solution

Essential information, available 24/7

- Real-time information, all the time
- Full HD 1080p image
- Built-in speakers
- Optional PC embedded with 40GB of storage



DRn-A series All in one Outdoor Solution

- Innovative touch screen operation
- Intelligent anti-vandalism features
- Built in high-spec PC, Wi-Fi, and Bluetooth connectivity



MX Range

- DID Technology for lower image retention
- Built-in PC models,
- Built in speaker,
- Higher impact wall displays and 4-way anti burn-in protection.



TS-3 series Touch Screen Solution

- Sizes ranging from 23 inches right up to 80 inches
- Enables users to interact intuitively with the high-quality images presented on-screen and experience a new way of working.



NEC V422 42" High-Performance Display with Speakers

Ideal for use as digital signage display in retail and restaurant markets, or indoor venues, training facilities and corporate boardrooms.

- Built-in 10W speakers
- Full 1080p high-definition resolution
- Available in 42", 46", 55", 65" and 70"
- TileMatrix™ allows you to create video walls up to 10x10



NEC X461S 46"/X551S 55" Super-slim Professional Grade LED LCD Displays

Super-slim Professional grade and LED edge lit LCD displays. HD Image quality, for 24/7 operations. Less than 45mm thick.



NEC X463UN 46" LED-Backlit Ultra-Narrow Professional-Grade Large-Screen Display

Take your LCD video walls to new levels of impact. Designed for the rigors of 24/7 operation. Advanced technologies of this model include:

- Direct LED backlighting
- Full 1080p high-definition resolution provides stunning detail
- Available in 46" and 55"
- Ground-breaking ultra-narrow bezel of 5.5 millimeters (screen to screen)
- TileMatrix™ allows you to create video walls up to 10x10



NEC P552 - 55" Professional Grade Large Screen Display

Industrial-strength, 24/7 operation for the most demanding digital signage installations. Ideal in quick-service restaurants, airports, public information environments, health care facilities and retail stores.

- Full 1080p high-definition resolution provides stunning detail
- Also available in 40", 46", 55" 70" and 82"
- AV inputs & Digital Tuner Optional
- Built-in NTSC/ATSC analogue/digital tuner allows for high-definition broadcast capabilities
- TileMatrix™ allows you to create video walls up to 10x10

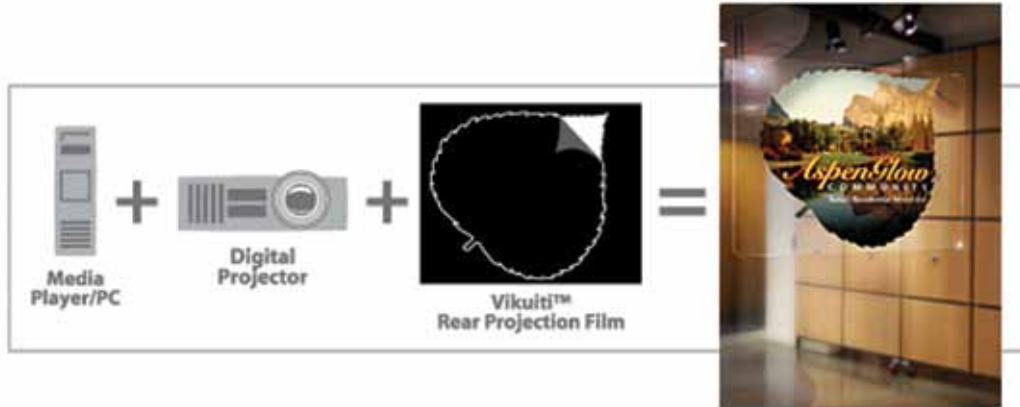


LCD AND PLASMA PANELS

VIKUITI

Turn your windows into live advertising space

3M Vikuiti Rear Projection Film



Vikuiti rear projection film transforms any transparent surface, like a window, into a projection screen. A digital projector and content from a media player complete the system.

Add a high-tech look to:

- Menu Boards
- Trade Show Booths
- Reception Areas
- Retail Store Windows

Vikuiti can be cut to any shape or size, providing maximum flexibility. Film is Self-adhesive and flexible - easy to apply to glass or acrylic surfaces.

Rear Projection signs can function 24/7 – maximizes reach of selling and promotional messages. High resolution across a wide range of viewing angles – Increases customer exposure to displayed image/message



Think outside the box and create your very own digital message.

Let Save Time Visuals show you how!

Panasonic PF30 Series

- 1080p FULL HD 3D Ready Plasma Displays – available in 42", 50", 60" and 65"
- 5,000,000:1 Contrast and faithful colour reproduction
- High Luminous Efficiency for Crisp images over a wide viewing angle
- Durable Front Glass and a Service life of approx. 100,000 Hours



Panasonic PH30 Series

- High Definition Plasma Displays – available in 42" and 50"
- 2,000,000:1 Contrast
- Energy Saving Design Greatly Reduces Power Consumption by up to 35%
- Crisp Motion Images

Panasonic LF25 Series

- 1080p FULL HD LCD Displays – available in 42" and 47"
- 500-cd/m2 Brightness
- Narrow Bezel 18.3mm
- Crisp clear images with a wide viewing angle for professional applications
- Fan-less design for dust-proof performance



ALSO AVAILABLE – Weather Proof and Outdoor LCD Screens
Call Save Time Visuals for more information

LCD AND PLASMA PANELS

SCREENCOM



Video Walls and 103" or 85" plasma screens are perfect for events, road shows, Exhibitions and conferences.

Available for daily hire or purchase.

SCREENCOM
VISUAL COMMUNICATION SYSTEMS



LCD AND PLASMA STANDS

STANDS

Boardrooms, entrance lobbies, retail displays and many other facilities can be complimented with a plasma display mounted onto a Plasma Display Stand.



Redleaf av equipment **RLPL601B**

Height adjustable Plasma stand with shelf

GILKON AV EQUIPMENT **8FSLU 339**

A freestanding Plasma Stand, any size screen up to 80Kg.



GILKON AV EQUIPMENT **8FSMAXIS1 / 8FSMAXIS2**

Available in two heights (1250 and 1650 mm - floor to midpoint). Suits any size display up to 80Kg.

GILKON AV EQUIPMENT **AVii**

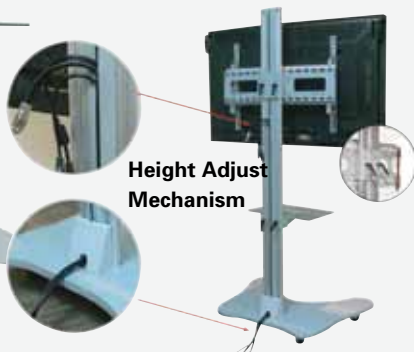
- Mobile solution perfect for small groups, young children or seated audiences
- Built in handles
- Ventilated, lockable cabinet
- Suits most 42" LCD Screens



SCREENCOM AV COMMUNICATION SYSTEMS **AV383**



- Mobile Plasma Stand
- Height of Screen and shelf adjustable
- 23" - 50" screen up to 68kg



Height Adjust Mechanism

GILKON AV EQUIPMENT **8FSR330i**



- Heavy Duty, freestanding Plasma Stand
- 32" to 50" Screen up to 80kgs
- 1830mm high

GILKON AV EQUIPMENT **8FSMAXIS1C / 8FSMAXIS2C**



- Mobile Plasma Stand.
- Lockable cabinet.
- Also available for dual screens.

LCD AND PLASMA WALL MOUNTS

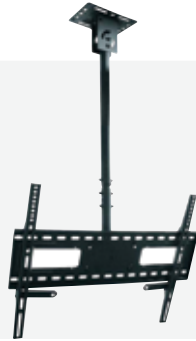
SCREENCOM/GILKON



AV420W

Universal ceiling mount screens

- Suitable for 23" - 37" screens
- Locking mechanism
- 20 degree tilt
- Cable management
- 36kg load capacity



8MPPHD D

- Dual, back to back screen
- Telescopic post
- Variable screen tilt and swivel
- Display panel security is built in



AV415

- Flat wall mount.
- Available in: 3 size options 23 - 37", 37 - 52", 52 - 65"
- Lockable



GILKON LCD WALL MOUNT LW02A

- Fits 10" to 32" screens with tilt



AV601D

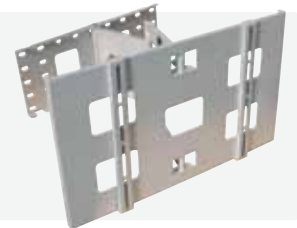
- Cantilever mount for 13 - 19" screens
- Flush mount single arm or double arm



8MPWAS42

Full 180 degree rotation.

- Multiple anchor slots
- Discrete push button locks



AV480WT

- Suitable for 32" - 52" screens
- Locking mechanism
- 20 degree tilt
- 90 degree rotation
- Cable management
- 36kg load capacity



AV508

- 23" - 42" cantilever bracket
- VESA mounting holes
- 15 degree tilt,
- Up to 35 kg
- Cable management



**An extensive range of AV mounting systems are available to suit all installations.
Contact your Save Time Visuals Consultant for more information.**

Client Name: John Sands Australia

Industry: Printing

Consultant: Jakob Malinovsky

***The Brief:** John Sands approached Save Time Visuals for a custom designed and installed AV system as part of their office refurbishment project. Systems were required for Boardroom, Showroom, Training Facilities, Offices and Breakout areas over two floors of the building. The equipment required was from every sector of our product range, from Projectors and Screens, to LED Panels, Audio Equipment, System Control and Interactivity! The audio system was required to have the ability to switch zones during meetings, training or functions.*

***The Solution:** Through liaising with Builders, Electricians, and Representatives from John Sands, we were able to provide an impressive solution. Demonstrations were held in our Showroom, as well as meetings on site at client premises.*

Both standard throw and Ultra Short Throw Interactive projectors were installed. A Crestron LCD touch screen provides automated control of Projector Power and Input sources, Concealed Motorised Screen, Audio System and Motorised Blinds. This touch screen was customised and programmed, including customer supplied logo, by Save Time Visuals' qualified Crestron Technician. Sound systems consist of ceiling speakers, digital amplifiers, zone switchers.



ESSENTIAL EQUIPMENT

- Epson Multimedia Projectors
- Motorized Projection Screen (see page 38)
- Interactive Projectors
- Interfit Screen Box

- Crestron 6" LCD Touch Screen Panel (see page 45)
- 8" Ceiling Speakers (see page 50-55)
- Digital Amplifiers, Mixers and Wireless Microphones



INTERACTIVE PRODUCTS

HEIGHT ADJUSTABLE TROLLEY

GILKON FREEFRAME HEIGHT ADJUSTABLE MOBILE TROLLEY



Mobile systems for interactive whiteboards allow you to share IWB technology between rooms.

Also available as a wall mounted model, with integrated lower & raising functions.

- Large fold-out shelf with safety grip surface, for notebook computers is included

Designed and manufactured in Australia



LOCKABLE CASTORS



LAPTOP SHELF



STABILISER



eBoard is an integrated LCD Interactive Touch Screen that utilizes Optical Sensor Technology

- 50,000 hour life
- USB port to interface with PC, laptop or Mac, simply plug and play
- 4 point calibration
- Light touch sensitivity, no pressure is required
- Dual touch and gesture capability

Interactive, Infinite Options

eBoard interactive software comes as standard so you can write, draw, scribble, highlight, circle, change colors, line thickness, erase, undo and so much more...

The power is yours and limited by your imagination.



Available for demonstration. Contact your Save Time Visuals Consultant for more information.

INTERACTIVE PRODUCTS

YOU TOUCH TECHNOLOGIES

Full Integrated, True Multi-Touch Screen

- Up to 4 simultaneous touches - High Accuracy
- Full HD Resolution - High Brightness
- Exceptionally fast and accurate tracking
- Plug and Play - NO Drivers required
- Activated by any object; finger, glove, pen/stylus etc.
- No calibration required - Automatic self-calibration feature
- Light touch with no pressure
- 3 year Warranty on NEC Commercial Grade LCD Panel



- Browse Websites
- Display Powerpoint Presentations
- Demonstrate Software
- Create Graphics

Perfect for:

- Education
- Public Libraries
- Architecture and Drafting
- Medical
- Commercial



Choose your Furniture

Proudly made in Australia



Fully Height Adjustable Table

- Use your touch screen horizontally to collaborate and plan your presentation - Use the touch screen vertically to present back to your audience
- Height adjustable from 720mm to 1400mm, with the push of a button
- Suitable for all ages
- Mobile Solution - Fits through doorways
- Several colours available

Draftsman Table

- Height Adjustable
- Tilt function
- Wheelchair friendly
- Suits 32" Touch Screen



Lowline Touch Screen Cabinet

- Mobile solution for small groups, young children or seated audiences
- Fold down shelves at each end
- Storage compartments below

You Touch Technologies manufactures high quality multi-touch optical touchscreens in a range of sizes. Our technology is utilized in a number of industries including education, medical, advertising and corporate venues. It has been set to recognize 4 simultaneous touch points with industry leading accuracy. (This may increase in the future)

We have been able to incorporate True Multi Touch capability with high accuracy and fabulous picture quality.

INTERACTIVE PRODUCTS

HITACHI EDUCATION SOLUTIONS

An interactive Transformation – Fits over your 50 or 65" plasma display & transforms it into an interactive, multi touch screen with full mouse functionality

- Hand writing recognition
- Starboard Software Included with Free Software updates



Consult Save Time Visuals for recommendations on the right product for your application

WT-1 Slate

The StarBoard WT-1 is a lightweight graphics tablet that enables you to control your lesson or lecture from anywhere in the room.

- 8" x 6"
- 16 function buttons
- Cordless Pen

*StarBoard software included



HITACHI StarBoard Fx-Trio Starboard Interactive Whiteboard

- Interactive work group - up to three people can write on the board simultaneously.
- Control using multi-touch hand gestures
- Use your finger, stylus, or any object to operate
- Electronic-free surface for durability
- Low-glare surface to minimize projector reflection
- Simple 9 Point calibration



HITACHI "Starboard" Link EZ 2



- Turn any dry erase board or surface into a fully functioning interactive Whiteboard
- Easy to set up and use
- Flexible active area, from 45" to 90" Diagonal
- Use your finger, stylus or any object
- Multi-touch hand gestures
- StarBoard software is included



HITACHI *StarBoard*

Welcome to the Hitachi StarBoard Community

At Hitachi, we recognise the importance of interactive learning, and furthermore value the dedication of educational leaders who identify the need for creating a fun, interactive learning experience for children in the classroom.

- Connect with members of the academic community
- Share ideas & ask questions
- Obtain official Hitachi support
- Download StarBoard lessons and much more...



Call today for a FREE demonstration in our showroom

INTERACTIVE PRODUCTS

HITACHI EDUCATION SOLUTIONS

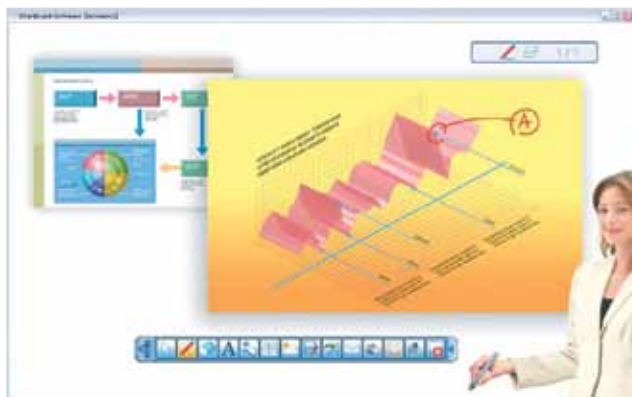
HITACHI CPAW2519NM Ultra Short Throw Projector

- Brightness: 2500 ANSI Lumens
- Resolution: WXGA (1280 x 800)
- Contrast Ratio: 2000:1
- Throw distance: 61 cm onto 88" screen
- Table Top Projection
- Comes with Interactive Pen and Starboard Software



HITACHI BZ-1 Ultra Short Throw Projector Business Edition

- Brightness: 2500 ANSI Lumens
- Resolution: WXGA (1280 x 800)
- Contrast Ratio: 2000:1
- Throw Distance: 61 cm onto 88" screen
- Table top projection
- Comes with Interactive Pen and Starboard Software optimised for Business use



Save Handwritten Data

You can save what you have written or drawn on the image using the StarBoard Software in PNG, JPEG, BMP, HTML or PDF formats to share via e-mail or print.

Conference Mode

You can share the StarBoard Software whiteboard with people in remote locations.

Write Directly with the StarBoard Software

You can write letters or draw shapes directly on the image with the interactive pen using the StarBoard Software and of course use it to erase what you have added. You can erase or change pen color or thickness from the floating tool bar.

Operating a Mouse with the StarBoard Software

Using the supplied interactive pen as a mouse lets you perform computer operations on the projected image using the StarBoard Software

Call Today to book a demonstration in our Showroom

EPSON® EB-485Wi INTERACTIVE MULTIMEDIA PROJECTOR



Ultra-bright. Ultra-flexible. Ultra-reliable.

- **Dual Pen Interactivity** - Simultaneous Dual Pen functionality
- **No driver installation required** - Installation has never been easier
- **Self-Calibration** - Interactive projectors that calibrate themselves for you
- **Advanced Networking Capability** - Enables users to monitor, control and present from a remote location
- **Broad Connectivity** - Including HDMI, USB display, PC Free slideshows, network and optional wireless connectivity
- **Lowest Lamp Price Ever Seen** - Incredibly low price of only \$79 inc GST (RRP. Aust)
- **16W Built-in Speaker** - Built in audio with the power to fill a classroom

- HDMI Connectivity
- 3,100 ANSI Lumens
- Resolution: WXGA
- Low Cost Replacement Lamp
- Optional Wireless Functionality



- 60" up to 100" diagonal (native WXGA) on nearly any wall
- Amazing interactive work environment
- No distraction of glare in the eyes or shadows on the board
- Added benefit of 3LCD Technology
- Presentations will feature rich, vibrant colours



Epson iProjection



Our first App for wirelessly displaying documents and photos to Epson Projectors. iProjection enables wireless projection from most iOS Apple devices running iOS 5.2 or later, including the iPad, iPhone and iPod touch to an Epson wireless projector.

- Can project vertically downward
- Change a tabletop into a workspace
- Optional MB29 table mount
- Easy Interactive Tools
- Turn your whiteboard into a fully interactive business or teaching tool - At the end of your class or meeting, simply save the file for printing or emailing students and attendees.

INTERACTIVE PRODUCTS

ELMO

THE ELMO CLASSROOM SOLUTION

Lessons come to life. The Elmo system combines curiosity and wonder to create lessons that are exciting, dynamic and memorable. Students learn more, learn faster, absorb and retain more. For teachers it's a tool for creativity.

Introducing the NEW ultra-compact visualiser:

MO-1

- Weighs approx 590g
- Present anytime, anywhere
- 5-megapixel CMOS sensor and full-HD image
- Easy to set up and store, Flexible Camera arm and head up to 300°



ELMO L-12 DOCUMENT CAMERA

This incredibly flexible document camera will help you explain subjects using graphics, works and real objects. Capture live moving images – for example every step in a Science Experiment, using the microscope attachment. Everything you put on the bed - student's work, biology samples, books, pictures, music scores - is projected so that the whole class is focussed and absorbed.

ELMO CRA-1 WIRELESS TABLET

From anywhere in the classroom, teachers use the Elmo Wireless tablet to drive and control lessons. To guide everyone in the class at once, as one. Image control is amazing, with split screens, a tablet pen for smooth, easy writing and to function as a computer mouse to operate all computer functions.



P30HD Visual Presenter

- 3.4 megapixel CMOS image sensor
- 16x optical + 8x digital zoom & Auto Focus
- 30 fps for smooth motion display
- HD 1080p/XGA/SXGA
- Flexible Free-angle camera arm



The Elmo Classroom solution is a truly involving, interactive learning experience. It is technology for learning, in every class, every subject, for every student.

Client Name: Mountain District Christian School, Monbulk
Industry: Education (Prep to Year 12 School)
Consultant: Jakob Malinovsky

The Brief: Following the completion of their new Gymnasium/Multi-Purpose Hall, Mountain District Christian School contacted Save Time Visuals looking for an Audio and Visual System, custom designed to meet their requirements. The hall is used for productions, assemblies and Sports, so any equipment installed must be well protected.

The Solution: A Sanyo Multimedia projector, with specialised lens was installed at the back of the stage, and a Screen Technics, motorised rear projection screen, enclosed in Screen Box at the front of the stage. Dual Input connection plates were fitted to allow for alternative input sources to be connected, along with an 8 button Crestron control panel. The self-amplified speakers were installed behind carpeted panels either side of the stage, providing protection, but not blocking the sound.

The Result: A well protected projector and hidden screen for when hall is being used for sports. When hall is used for assemblies or productions, the screen descends from it's enclosure at the touch of a button, and presentation is projected from the rear of the screen. Installing the equipment in this way also allows for presenter to stand close to the screen without obstructing the image, or looking into the projector's light beam.



ESSENTIAL EQUIPMENT

- SANYO projector with lens
- Motorized Rear Projection Screen (see page 38)
- Interfit Screen Box
- Crestron 8 Button Controller (see page 45)
- Self Amplified Speakers (see page 52)



EPSON PROJECTORS

PORTABLE PROJECTORS



EPSON® X11/W12

- Brightness: 2,600/2,800 ANSI Lumens
- Resolution: XGA/WXGA
- Low Power consumption, Long Life Lamp,
- USB Display
- HDMI
- Weight: 2.3 kg



EPSON® EB1761W/1771W/1776W

- Brightness: 2,600/3,000 ANSI Lumens
- Resolution: WXGA (1280 x 800)
- Contrast Ratio: 2000:1
- Weight: 1.7 kg
- 1761W and 1776W included wireless/1771W optional wireless
- Small enough to fit in your laptop bag



EPSON® EB-915W/925

- Brightness: 3200/3500 ANSI Lumens
- Resolution: WXGA / XGA
- Low Power consumption, Long Life Lamp,
- 16W Internal Speaker
- HDMI / USB
- Weight: 3.4 kg



EPSON® EB-1850W/1860

- Brightness: 3,700/4,000 ANSI Lumens
- Resolution: XGA/WXGA
- Automatic Setup
- USB Display Function
- Low Power consumption
- Network Connectivity
- Weight 3.5 kg

EPSON PROJECTORS

SHORT THROW PROJECTORS



EPSON® EB-420/25W/30/35W



- Brightness: 2,500/3,000 ANSI Lumens
- Resolution: XGA (1024 x 768) and WXGA (1280 x 800)
- Throw Distance 60" screen from 62cm
- Features: Network functionality, easy maintenance, built in 10W speaker purpose built Wall Mount



EPSON® EB-G5650WNL/G5800



- Brightness: 4500/5200 ANSI Lumens
- Resolution: WXGA/XGA
- Contrast Ratio: 2000:1 / 1000:1
- C2Fine Image Technology, Crestron Compatible networkability, Various projection modes available including DICOM Simulation.

ULTRA SHORT THROW / INTERACTIVE PROJECTOR



EPSON® EB-470/475/480/485
– Ultra Short Throw
EB-485Wi – Interactive Model

- Turn any hard flat wall into an interactive workspace (485Wi)
 - Brightness: 2,600/3,100 ANSI Lumens
 - Resolution WXGA / XGA / WXGA
 - 79" Image from 58.5cm
 - Integrated Wall mount and interactive pen Included (485Wi)
 - Low power consumption, Long Lamp Life
 - Network functionality
 - 3 Year Projector/1 Year Lamp Warranty
 - Direct connect to ELP-DC11 Document Camera
- See page 27 for more...

Made for



NEC PROJECTORS

ULTRA SHORT THROW PROJECTION



NEC 250XG/260WG/310WG

- Brightness: 2,500 / 2,600 / 3,100 ANSI Lumens DLP
- Resolution: XGA 4:3 / WXGA 16:10 / WXGA 16:10
- Contrast Ratio: 2000:1
- Features: 10W Onboard speaker, Over 2,500 hours lamp, Manual Focus

PROFESSIONAL INSTALLATION



NEC P350WG/420XG

- Brightness: 3,500 / 4,200 ANSI Lumens LCD
- Resolution: WXGA 16:10 / XGA 4:3
- Contrast Ratio: 2000:1
- Features: Carbon Savings Meter, 10W Onboard speaker, Lens Shift, Over 3000 hours lamp life

PROFESSIONAL INSTALLATION

NEC PA600X/500X/550W/500W

- Brightness 6,000/5,000/5,500/5,000 ANSI Lumens
- Resolution: XGA/XGA/WXGA/WUXGA
- Optional lenses to suit your installation, 360 degree installation HDMI input.



NEC M300WSG/300XSG

- Brightness : 7,000 / 7,500 / 8,000 ANSI Lumens
 - Resolution: WXGA/WUXGA/XGA
- Incorporating HQV Technology, advanced input panel includes HDMI, Display Port, USB viewer and dual computer inputs, and edge blending, these stackable projectors can produce images up to 32,000 Lumens in brightness.



HITACHI PROJECTORS

LIGHT PORTABLE PROJECTORS



HITACHI CP-X2521WN/3021WN

- Brightness: 2,700 / 3,200 ANSI Lumens
- Resolution: XGA 1024 x 768 pixels
- Optional wireless LAN, PC-less presentation, Manual Zoom, Long Life Filter, remote control

HITACHI CPR-X93

- Brightness: 2,600 ANSI Lumens
- Resolution: XGA 1024 x 768 pixels
- Manual vertical keystone correction
- Light and easy to use, high quality images
- Weight 2.2kg



PORTABLE/INSTALLATION SERIES



HITACHI CP-X3015WN/4015WN/ CPWX-3015WN

- Brightness: 3200/4000/3000 ANSI Lumens
- Resolution: XGA (1024 x 768) also WXGA (CPWX3015WN)
- USB Presentation Mode, PC-less presentation, Present via LAN
- Weight 3.6kg
- Optional Wireless



PROFESSIONAL INSTALLATION

HITACHI High Resolution Installation Projectors

- Brightness: Between 4,000 to 6,000 ANSI Lumens
 - Resolution: XGA / WXGA and WUXGA
- Features including Motorised H/V Lens Shift, H/V Digital Keystone Correction, DICOM Simulation Mode, DUAL HDMI input, Security and Anti-theft features, Network Control & Maintenance, Optional Wireless Presentation



PANASONIC PROJECTORS

PANASONIC



Made for



Panasonic PT-LB3EA

- Brightness: 3,200 ANSI Lumens
- Resolution: XGA (1024 x 768) 4:3
- Weight: 2.3kg
- Features: Up to 5000 hour lamp life, Direct Power Off

Optional wireless function from your PC, iPad, iPhone or iPod Touch - control projector or send PDF and JPEG content.



Available on most wireless projectors



Panasonic PT-FW430EA

- Brightness: 3,500 ANSI Lumens
- Resolution: WXGA (1280 x 800) 16:10
- Contrast Ratio: 600:1
- Weight: 6kg
- HDMI Input
- Optional Wireless
- 3 LCD Logo

Panasonic PT-VW330EA/VX400/VX400NT

- Brightness: 3,000 / 4,000 / 4,000 ANSI Lumens
- Resolution: WXGA/XGA/XGA
- Contrast Ratio: 2000:1
- All with wired LAN
- Weight: 3.5kg

VX400NT - Wireless function for cable-free projection and transmission from iOS devices





Panasonic PT-VW430/VX500

- Brightness: 4,000 / 5,000 / 3,100 ANSI Lumens
- Resolution: WXGA (1280 x 800) 16:10 / XGA (1024 x 768) 4:3
- Contrast Ratio: 3000:1
- 1.6x Zoom lens
- Weight: 6kg
- Dual computer input and HDMI Input

Panasonic PT-VW435N/VX505N

- Brightness: 4,000 / 5,000 / 3,100 ANSI Lumens
- Resolution: WXGA (1280 x 800) 16:10 / XGA (1024 x 768) 4:3
- Contrast Ratio: 3000:1
- 1.6x Zoom lens
- Weight: 6kg
- Dual computer input and HDMI Input
- High-speed wireless projection from multiple PCs
- Latest Wireless Manager ME 6.0
- Wireless projection from iPad/iPhone or iPod touch
- USB Display Function for easy projection using USB cable
- USB Memory Viewer for projection without a PC

Panasonic Large Venue Projectors

- 5 models in the range with a choice of lenses
 - Brightness between 4,500 & 6,000 ANSI Lumens
 - Resolutions: XGA, WXGA and WUXGA
 - Dynamic Iris for a superb contrast ratio
 - Side-by-side and P-in-P functions (PT-EZ570/EW630/EW530)
 - Abundant terminals including HDMI and DVI-D Inputs
 - Built in 10W speaker
- Compatible with Crestron RoomView™



Panasonic U250XG/260WG/U310WG

- Ultra Short-Throw, 3-D Ready
- Brightness: 2,500/2,000 ANSI Lumens
- Resolution: WXGA (1280 x 800)/ XGA (1024 x 768)
- HDMI input
- Direct Power Off
- Flexible projection settings for versatile applications - table-top installation, wall projection, floor projection, ceiling projection



SCREENS

DA-LITE

Da-Lite and Gilkon screens represent the best in design, function and versatility. They are crafted for easy use making them the most popular screens of their kind on the market today.



WALL/CEILING SCREEN



Model B range is a general purpose screen. Case design allows flush mounting to ceiling or wall. Deluxe range is a tensioned manual wall or ceiling screen. Designed to stand the demands of educational use, these qualities are also attractive for business and government applications.

Available in variety of formats and sizes.

MOTORISED SCREENS



The Cosmopolitan Electrol range. Patented "In-The-Roller" motor for quiet operation. White textured case blends with most décor.

Available in Square, Video & HDTV Formats.
Range of sizes available.

Manufactured in the USA.



TRIPOD SCREENS



Ideal for classrooms and training rooms. Matte white fibreglass screen material. A high quality, low cost, tripod screen. Ideal for education usage where durability at a modest price is important.

Available in Square and Video Formats. Range of sizes available.
Manufactured in Australia.



DELUXE INSTA THEATRE SCREEN



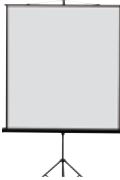
Its sleek case and pneumatically assisted set up is the ultimate in portable projection screens for today's applications. Perfect choice for business presentations.





SCREENS

- 20 Years Of Setting The Projection Screen Industry Standard
- Over 30 Models, And 500 Distinct Sizes + Custom Made Designs
- 95% of all Screen Technics Products are Manufactured In Australia



LIFTERS



- A Comprehensive Range Of Lifting Devices,
- High Quality Painted Surfaces And Ceiling Edge Strips
- No Fuss Single Trade Fitting.
- All Interfit Lifters come standard with The Connect Motor Controller that allows full Integration with any of the Screen Technics suite of products.



ST PEERLESS MOUNTS

- Industry Leader For Over 40 Years
- Innovative Mounting Solutions that Focus on Quality, ease of installation and functionality
- Aesthetically Pleasing Look

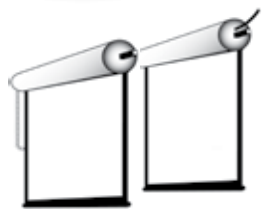


BLIND SYSTEMS



Screen Technics, your one stop solution to a single supply and integration platform of the automated window treatment sector and the AV industry.

AV + Blinds + Automation = Single trade fitting



SCREENS

HERMA

So many options, so smart, so Grandview.



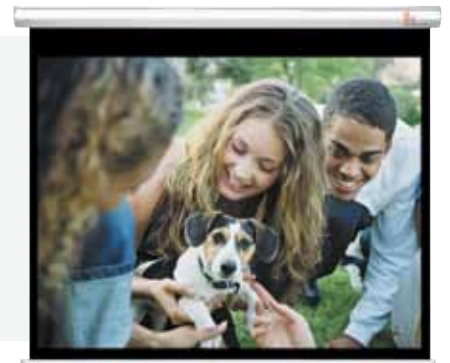
Grandview Motorised Smart Screen

Like the idea of your screen appearing at the press of a button? The Grandview Smart Screen does just that. IR remote control supplied as standard as well as the choice of 12V trigger, relay control, or RS232. Available in 16:9, 16:10 and 4:3 in a range of sizes.

Grandview Deluxe Manual Pull Down Screen

Roll your screen away! Need to hide your screen away but not wanting a Smart Screen?

The Grandview Deluxe Pull Down has some smarts of its own, with a built in decelerator and braking system, this screen retracts steadily and slowly, stopping at the top. Available in 16:9, 16:10 and 4:3 aspect ratios.



Grandview Scissor Lift

Many times you need to present in a room where there is no permanent AV Installation, the GV Pull Up screen easily solves the screen component. Light to carry, easily raised, this screen will make your portable presentation look professional.



GV Pull Up Screen

If the Pull Up Screen is a better option, then the Scissor Lift is one of the best. With built in gas struts, this screen lowers and raises with the minimum of effort required. Makes setting up a temporary projection display effortless.



Client Name: AD McCulloch (on behalf of Department of Veteran's Affairs)

Industry: Builder (Government)

Consultant: Shimon Maymon

The Brief: Save Time Visuals were approached by AD McCulloch for their assistance on this project at the Department of Veterans Affairs in LaTrobe St, Melbourne. The project consisted of a series of 6 meeting rooms with concertina style dividing walls. Projectors, screens, audio were to be installed in each room, each with their own individual control. Also required was a main projector and screen to be used when all 6 rooms were opened up into one large meeting area. This location required control of all 6 units. In Addition, two rooms required hearing assistance systems, in the form of a hearing loop. The project was to be designed, and installed on a strict budget, and urgent time line.

The Solution: Meetings and demonstrations were held in our Demonstration Room, and Save Time Visuals enlisted the help of our Audio Technician and Crestron Consultant, for the design of this system.

The Result: A fully integrated Audio and Visual System allowing for any of 6 rooms to be used independently of the others, or the entire space to be controlled by the master controller. When building or renovating buildings with public access, there may be legal requirements to install a hearing assistance system for the benefit of any hearing impaired people who access the venue.

ESSENTIAL EQUIPMENT

- Projectors
- Motorized Projection Screen (see page 37)
- Crestron Controllers (see page 45)
- Ceiling Speakers (see page 50-55)



PROJECTOR MOUNTS

PROJECTOR MOUNTS

HERMA

Motorised Dipper



AV820



Universal projector security cage heavy gauge cold rolled steel, security lock with key, suitable for projectors up to 300 x 250 x 100mm



Compact Post

- Fixed ceiling projector mount
- Fits most projectors using universal mounting plate



AV817



- Projector Flush Mount
- 20 degree tilt and pan
- Quick release mechanism
- 20kg load capacity



AV822-L610



- Short Throw Projector Wall Mount
- Adjustable to 570mm from wall
- Cable management system
- Quick release mechanism
- Load capacity 10 kg



AV822-L1500



- Short Throw Projector Wall Mount
- Adjustable to 1460mm from wall
- Cable management system
- Quick release mechanism
- Load capacity 10 kg



Telescopic Post



Telescopic or Inclined post for inclined ceilings.

- Cable management
- Height adjustment



Security Cage



Highly effective theft deterrent.



AV816

Universal projector bracket flush mount 360 degree rotation, quick release, up to 20kg, 20 degree tilt. Ceiling hole cover plate included.





Client Name: Kambrya College, Berwick

Industry: Secondary Education

Consultant: Ben Donald



KAMBRYA
COLLEGE

The Brief: Kambrya College contacted Save Time Visuals looking for a digital signage/display screen system around the school. After numerous discussions, meetings and site visits, it was decided that the ability to record, store and distribute learning resources using the same system would streamline operations, and allow the college to build their content library for free - Replacing their existing Clickview System.

The Solution: A Full 12 Terabyte DVC Enterprise Server was installed, along with 12 Dedicated Digital Signage panels in the Conference room, foyer and other public areas. Each screen was equipped with a Media controller, to process the Digital Signage Presentation. Once the Active Directory Integration had been done, and staff trained on the use of the system, Kambrya College was ready to continue building their digital content library.

The Result: A streamlined system enabling teaching staff to access content wherever they may be within the college, inspiring students with motivational scrolling messages on the Digital Signage Screens, and occasionally watching the cricket in the staff room.

DIGITAL CONTENT MANAGEMENT

DVC SYSTEM



The latest in Digital Content management and distribution!

- ✓ DVC offers 'So Much More' for so much less \$\$\$
- ✓ DVC is an up to date technology backbone that can grow and evolve with your school.
- ✓ Compatible with both PC and MAC
- ✓ Single Server Solution
- ✓ Digital Signage and Camera Management Software available
- ✓ Free Content
- ✓ Electronic Program Guide
- ✓ Video Editor
- ✓ Live Streaming
- ✓ Emergency Alert System
- ✓ Record multiple Foxtel channels overnight/holidays

Call today for a full on site demonstration!



...so much more

CONTROL SYSTEMS

JED

Installing A/V systems or Electronic Whiteboards? You need JED controllers!

Over the last 12 years, JED, based in Melbourne, Vic, has designed and built a range controllers for lecture theatres, boardrooms, classrooms and places of worship.

They control a variety of projectors, flat panels, TVs, projection screens and audio devices. These units are simple to setup and install, and use reliable two-way RS232 communications.

See: www.jedmicro.com.au

The **T460R** family has a new O-LED text display showing up to eight named channels, lamp hours, warm-up / cool-down times, with just four buttons.

The **T430/T440** low-cost family has from two to eight buttons for simple classroom or conference room use, controlling channels, audio and screens.



Designed, programmed and made in Australia by JED Microprocessors Pty Ltd

EXTRON



MLC 104 Plus

MediaLink® Controller with Ethernet Control



MLC 104 Plus AAP

MediaLink® Controller with IP Link® Ethernet Control and AAP Opening

Extron TLP 700MV - 7" Wall Mount TouchLink™ Touchpanel



Key Features:

- 7" colour touchscreen with 800x480 resolution and 18-bit colour depth
- Customise up to 10 backlit buttons for expanded control
- User-friendly volume knob for simple and intuitive volume control
- Full-motion video display for preview and monitoring
- Compatible with all IP Link® control processors
- Available in Table Mount, Table/Lectern Insert or Wall Mount models

Full range of Matrix Switches, Power Amplifiers, Distribution Amplifiers, Line Drivers, Extenders, Software and Specialized Products available.

Crestron is the leading provider of control and automation systems for homes, offices, schools, hospitals, hotels and more. Let Save Time Visuals trained consultants help tailor a solution to control and monitor all of your AV equipment.



Classroom Package – An extremely simple and cost-effective presentation control solution for K-12 primary education classrooms and small meeting rooms. Control Projector power, select source and speaker volume using this 8 button wall plate.



Touch Panel - delivers high-end style and performance in a striking tabletop design. Sleek and compact, the TPS-6 does away with piles of remotes and cryptic control panels, affording true "one-touch" control over a broad range of complex devices and systems. Available in Black or White



Boardroom Package - designed for installation in a wall or podium, delivering the industry's best multimedia room control technology in a convenient, space-saving design. Perfect for classrooms, meeting rooms, lecture halls, and training facilities, the MPC-M20 provides a fully-programmable user interface featuring an attractive and intuitive layout of push buttons with customisable backlit labelling, volume control and a 5-way navigation pad. Available in Black or White.



CONTROL SYSTEMS

JOEY

JOEY MICRO 6



- 6 programmable buttons.

JOEY 4" / 6"

LCD Wallmount Touch Screen



JOEY MICRO 9



- 9 programmable buttons.

JOEY LITE MKII

Wallmount



Control all of your Multimedia Equipment using these Joey Control Panels.

Choose from 4" or 6" LCD touch screen, 6, 9, or 24 button models.

- Infra-Red or RS232,
- Save Energy by enabling the Auto Room Shutdown feature.
- Complete kit, 100% customisable

The best control panel around

- 24 customisable buttons
- Glass Touchscreen.

ALTINEX

Altinex Colour Touch Panel

Easy-to-use, High resolution colour touch panels for your automation needs

Program a single button to complete functions such as closing the blinds, dimming the lights, turning on the projector, and lowering the projection screen. Another press of the same button can reset the room to the original configuration.

The CP450 Series of touch screen controllers are ideal for a wide variety of applications.

Altinex MultiTouch Colour Panels are also available as an 8" Wireless version and an In Wall Widescreen version.



Tilt 'n' Plug or Pop 'n' Plug – Table or floor boxes.



Client Name: Bluedoor Technologies

Industry: IT Software

Consultant: Allan Eddy

The Brief: Client contacted Save Time Visuals and asked us to install a video conferencing system in the boardroom of their office in Melbourne's CBD. The system would allow communications with sister companies in United Kingdom and Other Clients.

The Solution: Due to existing equipment and cupboards in the room, Allan was able to design a layout to best maximize the space available.

Save Time Visuals arranged to have air conditioning ducts repositioned, enabling recessing of motorised screen in ceiling cavity, and the concrete floor was chased in order to run cabling safely and neatly to floor boxes.

A High Definition camera was mounted on a built in shelf below the existing projection screen, and other equipment located in a cupboard, out of sight.

A stereo mixer amplifier six baffled speakers mounted in the ceiling, enhance the call quality.

The Result: A sleek, stylish looking installation which enables high quality audio and visual communication with Bluedoor's sister company and other clients both locally and internationally.



VOICE CONFERENCE

POLYCOM

Hints & Tips



About Video Conferencing...

Be empowered to communicate in real-time across any network.

In a world of globalisation, outsourcing, telecommuting and mobile work forces, the ability to communicate and share information becomes a distinct advantage.

Your Save Time Visuals consultant can help design a Polycom solution to connect your people, ideas, and insights.

Polycom® SoundStation2™ – Our Most Popular Conference

The standard for voice conference calls in small to midsize conference rooms

- Large LCD display (optional) for caller ID and other call information
- Easy to install and use



Also available Polycom® SoundStation2W™ – Wireless Voice Conferencing

Superb voice conferencing performance with the freedom and flexibility of wireless

- Roam up to 50 metres from the base station
- 3.5 metre microphone pick up range
- Added security of Voice encryption

Polycom® SoundStation® IP 7000 – VoIP Conference Phone

Astounding voice quality and clarity from the world's most advanced VoIP conference phone



Polycom® SoundStation® IP 6000 – Next Generation IP Conference Phone

Enjoy clearer, more productive business conversations using this IP conference phone specifically designed for small to midsize rooms

- 4 metre microphone pick up range

Polycom® SoundStation VTX 1000®

High performance voice conferencing for rooms that require exceptional voice quality

- 7 metre microphone pickup range
- Stunning clarity and quality for clear, productive calls
- Integrates with Polycom VSX video conferencing systems



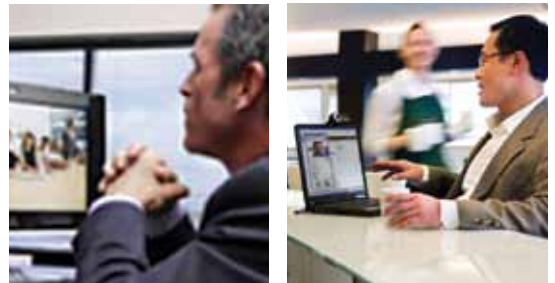
Polycom Video Conferencing Solutions

Save Time Visuals can offer a complete portfolio of high definition telepresence solutions over IP networks ranging from personal telepresence solutions to immersive telepresence solutions.



Personal Telepresence

Polycom Personal Telepresence solutions seamlessly extend clear, high definition video to home offices, mobile users, branch sites, and beyond.



Room Telepresence

Polycom's powerful high definition solutions for room environments expand real-time knowledge sharing and drive faster, more informed decisions.

Immersive Telepresence

Polycom immersive telepresence solutions provide a natural, "across the table" experience where every meeting participant is shown in true-to-life dimensions. You'll speak with and read the body language of others – just as if you were all in the same room.



Wireless Education Bundle

Share knowledge without boundaries and ensure students and staff have access to the right information with this Video Conferencing Solution for the Education Sector

- Polycom DXX7000-720 with People+ Connect
- Dual Screen Conferencing Cart
- Bonus Squiggle Video Whiteboard Kit
- 2x Samsung 46" 1920 x 1080 Full High Definition Display Panel
- Wireless Connectivity
- HD Video and Audio



CASE STUDY

CASA D'ABRUZZO

Client Name: Casa D'Abruzzo Club, Epping
Industry: Entertainment/Restaurant
Consultant: Jakob Malinovsky

The Brief: Save Time Visuals were approached by Casa D'Abruzzo Club and asked to design and install an Audio System within their function room. Some elements of the existing system were to be reused, with some extra boost. They also requested the ability to control the volume of music and speech systems independently.

The Solution: An equipment rack was installed behind the scenes, to house all equipment, and provide ease of use for operators. Equipment housed in the rack includes Mixer and Power Amplifiers, as well as receivers for the microphones. 30 ceiling mounted speakers were installed, some to transmit speech, and some to transmit music. A variety of wireless and wired microphones were supplied including hand held and waterproof head worn styles.

The Result: A functional, easy to operate Audio system, which provides separate volume control for both speech and music. A variety of microphone styles cater for user's preferences and allow for multiple people to speak without passing microphone. The system integrates with existing subwoofers and front of house speakers, providing an exceptional quality sound system, within the budget specified.

ESSENTIAL EQUIPMENT

- Receivers, Microphones and Amplifiers (see page 52)
- Ceiling Speakers
- 12RU Equipment Rack



Voice Amplification Systems



What is it all about?

Voice Amplification is the process where a teacher or presenter uses a small microphone device which wirelessly transmits their voice to various receivers.

Depending on the environment, the receiver could be a series of speakers, installed in the room, great for quietly spoken presenters or those who wish to prevent vocal strain. In the case where some users require additional assistance, a variety of different earphones or headphones could be used. There are even systems available which can transmit to a neck worn loop, which is set to the frequency of the 'T' switch on a hearing aid, to ensure individuals with hearing difficulties gain a full understanding of the presentation or lesson.

Classroom Research finds Voice Amplification Helps Learning

Extensive research has been conducted into the benefits of Voice Amplification. It has been found by many researchers that due to the amount of time each day teachers spend talking, and the volume of voice they sometimes need to overcome classroom noise, they are at a high risk for vocal abuse, compared with people in other professions.

Questionnaire data from teachers and students, or presenters and audience members, has shown some very positive responses.

Actual Academic results have proven positive trends in Reading, Writing and Number Skills, as well as retention of learning.

Especially noted was greater speech perception for those whom English is their second Language.



Students Say:
We are able to hear teacher louder and clearer, from everywhere in the room - even with their back turned to us. Greater speech perception for those who English is their second Language.



Teachers and Presenters Say:
My voice is less strained and I felt less fatigued during the day. Maintaining Discipline in the classroom became easier. The students participated more in class.

Let Save Time Visuals show you how a Voice Amplification System can ensure that your Students or Audience Members don't miss a word of your lessons or presentations.

References for this research available

Need Audio for your new School Hall?



Whether you are building a new hall or classroom or reviving an existing space, Save Time Visuals can assist you to create a solution that will help reach your AV goal on any budget.

Audio Pack 1

The Audio Pack forms part of what is currently recommended and specified for the BER Hall solution and can be built on or customised to match your school's needs.

This package is designed to provide your Hall with a simple yet fully functional audio system that will cater for most of your assemblies and functions over the school year. From a basic audio system to a full production design, Save Time Visuals can assist at any level.

Audio Pack 1 Features

- 1 x Australian Monitor MX883 Mixer
- 1 x Australian Monitor XA1400 stereo amplifier
- 2 x Australian Monitor XRS12 speakers
- 2 x Australian Monitor AMISLSB1 wall brackets (not pictured)
- 2 x Beyerdynamic TGV35DS cabled microphones
- 1 x Mipro ACT707DE dual wireless microphone receiver
- 1 x Mipro ACT707HE Handheld wireless microphone
- 1 x Mipro ACT707TE wireless belt pack
- 1 x Mipro MU55HNS headset microphone
- 3 x Mipro ATC203 microphone stands
- 1 x Mobile or Fixed equipment rack (not pictured)

Audio Pack 2

This pack forms part of what is currently recommended and specified for the BER Hall solution and can be built on or customised to match your needs.

This package is designed to provide you hall with an easy to operate, but high quality audio system which will cater for most of your performance and presentation needs.



Let your students Shine!



Based on our extensive experience in AV solutions for the education sector, here are some sample packs for audio, video, and control systems to guide you through the initial steps towards your AV goal.

Audio Pack 2 Features

- 1 x AMD 200 Mixer amplifier
- 1 x DCM 500 Power amplifier.
- 4 x XRS 100DV Speakers
- 4 x XRS10 Speakers bracket, heavy duty.
- 6 x Wireless microphones (Choice of Hand Held, Head worn or Lapel), with receiver units.
- iPod/Audio Wall Plate for external connection and CD Player
- AV cabinet to house all equipment

Audio Pack 3

This pack caters to the larger BER Hall designs, and can be built on or customized to match your school's needs. This package is designed to provide your hall with a comprehensive Audio Solution including speakers, microphones, stands and a Lectern.

Save Time Visuals' experienced System Integration Consultants can custom design a system for your needs.

Audio Pack 3 Features

- 1 x Australian Monitor PM16 Mixer
- 2 x Australian Monitor XA1400 stereo amplifier
- 4 x Australian Monitor XRS12 speakers
- 4 x Australian Monitor AMISLSB1 wall brackets (not pictured)
- 4 x Beyerdynamic TGV35DS cabled microphones
- 1 x Beyerdynamic GM304 Lectern microphone (not pictured)
- 2 x Mipro ACT707DE Dual wireless microphone receiver
- 2 x Mipro ACT707HE Handheld wireless microphone
- 2 x Mipro ACT707TE wireless belt-pack
- 2 x Mipro MU55HNS headset microphone
- 6 x Mipro ATC203 microphone stands
- 1 x Mobile or Fixed equipment rack (not pictured)
- 1 x Lectern



GENERAL AUDIO

ASSISTED LISTENING

Hearing Assistance / Tour Guide / Translation System

Providing guided tours through your facility? Impress clients, media and investors on your tours. This wireless system allows the tour guide's voice to be heard clearly in even the most noisy environments. Each guest wears their own receiver to listen to the tour guide.



Are members of your audience hearing impaired?



Whether in a theater, in a house of worship, or at a sporting event, individuals want to experience every word and every moment. That's what they come for, and they deserve to

participate by hearing every single word. Listen's products are designed to provide an easy to use and convenient wireless sound solution for your patrons who want to make sure they don't miss a thing.

WORK W All in 1 – Powered Lectern

Just connect power, and you are ready to present!

- 4 wide range speakers, for a high 40w RMS of output power
- 2 microphone inputs, and 2 AUX inputs (each with their own volume control)
- Includes gooseneck microphone and reading light



CHIAYO IWA-200/220 InfraRed Voice Amplification System

- License free, interference free and eavesdrop free!
- Easy to use and easily transportable between rooms.
- Available types of transmitter includes handheld, belt-pack and pendant style.
- Demonstration Available
- Installed or portable system available



CHIAYO Wireless System

- LIVE Series Wireless Mic System
- 16 User Selectable UHF Frequencies
- LCD Menu driven display
- Balanced XLR mic level and unbalanced jack line level outputs
- Range of Transmitters available



Head worn Mic Package



Guitar Lead Mic Package



Handheld Mic Package



Lapel Mic Package

Need Audio for your Venue?



Truly energise your exercise classes with this Premium Aerobic Fitness Package from Fitness Audio

- Sweat resistant head-worn microphones that can be used in up to 7 classes a day and come with a two year "No Sweat" warranty.
- Belt-pack or Arm-pack pouches
- Choose from wireless systems for TV sound on cardio machines or ceiling mounted speakers for a room full of music.

Let Save Time Visuals show you how!



PORTABLE PA SYSTEMS

MIPRO

The Worlds Leading Brand Of
Wireless Portable Public Address Systems
 Offers Unlimited Mobility And Solutions
 For All Applications



MIPRO MA101

- Powerful 30-watt RMS
- Sleek, lightweight. 3kg
- For crowds up to 80 people indoors
- 8 hours continuous use
- Optional UHF Radio Mic Operation

MIPRO MA705

- 50W RMS for crowds of up to 200 people indoors
- Rechargeable batteries for up to 8 hours use
- Quick to set-up and simple to operate
- Weight: Under 10 kg

MIPRO MA707

- 70W RMS for crowds of up to 500 people indoors
- Unique built-in storage compartment for microphones
- Extension speaker optional

MIPRO MA808

- 250W RMS for crowds of up to 1000 people
- Voice Priority
- Battery Meter
- Unique built-in storage compartment for microphones
- 5-6 hours use per charge

MIPRO LH25 / LH25SS Megaphone

- Powerful 25 watt output
- Built-in siren generator
- Uses 6 C cell batteries (not included)



Customise your Portable PA System
 Audience size? (Indoor/Outdoor)
 How many microphone receivers? (up to 4)
 What style microphones? (Head worn,
 Lapel or Hand Held)
 CD / MP3 / USB Player ?

PORTABLE PA SYSTEMS

CHIAYO PORTABLE

Servicing the education market for over 30 years



CHIAYO Victory Portable PA

Top of the range for quality and performance

- Audiences over 200 people
- Max 200W/120W (RMS)
- Option including CD/MP3/USB player, recorder, and wireless hand held, lapel or head-worn microphones
- Weight: 25 kg

CHIAYO Challenger Portable PA

Perfect blend of performance, price and visual aesthetics

- Max 150W/120W (RMS)
- Audiences up to 200 people
- Option including CD/MP3/USB player, recorder, and wireless hand held, lapel or head-worn microphones
- Weight: 21 kg

CHIAYO Focus Portable PA

- Versatile A4 sized portable sound system
- Suits audiences up to 50 people indoors
- Max 50W/30W (RMS)
- USB Digital Player and MP3 recording device
- Weight: approx 5.5kg

NEW Outdoor trolley available for Challenger & Victory models

CHIAYO Outdoor Sports Pack

Outdoor horn speaker package for use with most Chiayo Portable PA Systems. Provide greater coverage and output - Especially for large assemblies, school sports days, or field events. All cables and stands included.



CHIAYO iTALK Voice Saver



- Light weight (620gms)
- Ergonomic design
- In-built rechargeable batteries for up to
 - 4 hours talk time.
 - Ideal for demonstrators, lecturers or tour guides.

CHIAYO Coach 400 Personal PA



- 25W Wireless PA System
- 4" Full range speaker system (Max output 40W)
- USB / MP3 port
- Wireless or Wired microphones
 - 2 alarm sounds for emergency broadcasting
 - Weight 1.6kg

Albatross Multimedia Presentation Case

- All in one Portable Presentation Solution
- Weighs less than 10 kg's
- Quality components



- Sturdy carry case
Dimensions: 450 x 430 x 160mm

- E-Box Micro computer CPU:
Intel Atom TM Processor,
Dual Core 1.6 GHz, Memory
1G/2G, Hard Disk 160Gb,
Max Resolution 1920 x 1440

- Input plate
VGA, Audio
Input/Output



- Wireless keyboard

- 3.2 Mega Pixel
Visualiser with
LED lights.

- Built-in wireless microphone
and speakers.

Albatross Wireless Microphone System

- Connects to any powered speakers or sound system with Audio Input
- Connection established within seconds
- Up to 50m range
- Small & Light Weight (45 x 82 x 20mm)
- Head-worn or handheld microphone/transmitter with volume adjustment
- Self Amplified Speakers also available



- Demonstration available

SHOWROOM INVITATION

SAVE TIME VISUALS

YOU'RE INVITED!

Save Time Visuals would like to invite you to view a fully immersive live demonstration of any or all of our products in our State-of-the-Art Demonstration room



Some of our products include:

- Video Conferencing System
- Interactive Whiteboard and Interactive Projector
- Document Cameras and Visualisers
- Portable Projectors

- Digital Signage Display
 - LCD Touch Screen with Height Adjustable Table
 - DVC Demonstration
 - PA Systems and Voice Amplification Systems
- (Other products available on request, subject to availability)



And we make great coffee!

13/45 Normanby Road
NOTTING HILL VIC 3168
(Just 2km off Monash Freeway)
Bookings preferred...

PRESENTATION FURNITURE

AUDIO VISUAL TROLLEYS

Touch IT Interactive Early Learning Centre

Bring interactive learning within reach of your youngest students. Perfect for Kindergarten, Pre Primary and Junior Primary students with small group learning activities. Ideal for students with special needs.



GILKON AXIS Multimedia Centre **2AX-MMCI**

- Secures valuable equipment.
- Moves multiple pieces of equipment easily from room to room with one convenient unit.
- Quick to set up
- All doors and covers have locks



GILKON Steel-Lite Trolley **2STLITEC**

- Sturdy three shelf unit
- Cabinet has key locks for security
- Serves as a basic utility cart
- Designed with a wider base for safety and stability



GILKON Tuf-Lite Trolley **2TUF-LITE51**

- 3 sets of interchangeable legs
- 3 injection moulded shelves
- Shelves have safety retaining lip
- Choose the size to suit your needs by using the various height configurations



Coloured Utility Carts **QTWT1642**

- Match with existing colour schemes
- Injection moulded thermoplastic
- Will not chip crack rust or peel
- 2 locking and 2 non locking 10cm castors



Tuffy Utility Trolley **QTWT42**

- Injection-moulded thermoplastic trolley
- Will not chip, warp, crack, rust or peel
- 3 shelves with 6mm retaining lip
- 2 locking and 2 non locking 10cm castors



Tuffy Laptop Work Station **QTWP S4**

- Total dimension (LxWxH) - 46 x 90 x 97.5cm
- 4 work surfaces with adjustable platforms



Unimate Total Erase Easel QT100TE

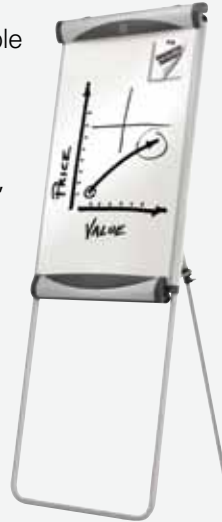
Double sided melamine surface - non magnetic

- Subtle Grid Pattern
- Adjustable height up to 1780mm
- Board size 660x860mm
- Pad retainer for single document or an entire flipchart pad



Porcelain Magnetic Easel QTEU1000TE

- Steel backed, magnetic porcelain surface
- Height adjustable to 3 heights.
- Includes adjustable flip-chart hooks, pad clamp and folding accessory tray.
- Board size 1000 x 685mm



Duramax Flipchart Easel QT200E

The perfect easel to withstand the wear and tear of frequent use.

- Designed to resist scratches and dents
- Quality moulded high-density polyethylene plastic
- Entire easel unit is self-contained
- Pedestal base slides out from the easel body locking into position
- Spring loaded retainer securely holds flip-chart pads up to 685 x 860mm
- 1825mm height



Vista Whiteboard Flipchart VFCE

Magnetic Whiteboard backing with pen tray. Includes 50 sheets Flip-chart paper. Telescopic legs. Board size approx. 600 x 900mm, weight 20kgs.



Vista Mobile Flipchart VMFC

Magnetic whiteboard backing with pen tray. Lockable castors. Fixed Height. Board size approx. 600 x 900mm.



Keyboard/Projector Stand DF136

Tripod stand with flat table surface for laptop computer/projector or similar, adjustable height from 920 - 1300mm, 10kg weight capacity, large footprint for stability, steel construction



PRESENTATION FURNITURE

LECTERNS

Microphones, lights, equipment shelves and castors also available.

Lectrum **Classic Series**

- Quick and easy to assemble and disassemble, for transport.
- Adjustable height guides.
- Configure to suit your applications and surroundings.
- Comprehensive range of frame and dress panel colours.



Lectrum **Aero Series**

- Sleek, dynamic design.
- Aerofoil shaped legs and gently curved dress panel.
- Integrated document shield with space for permanent or temporary logos.
- Dual microphone inputs with on-board phantom power.



LECTERN AUSTRALIA **Chancellor AL1800**

- Stylish Aluminium Frame Available



LECTERN AUSTRALIA **Senator AL 2000**

- Rounded Aluminium Frame Available in Black, Silver or Gold.
- Digital Clock



LECTERN AUSTRALIA **Director AL1500**

- Stylish Black or Silver Aluminium Frame



LECTERN AUSTRALIA **Diplomat AL200**

- Basic Black Powdercoat Frame





VISTA

GENERAL OFFICE WHITEBOARDS AND PINBOARDS



ELECTRONIC WHITEBOARDS

NEW MODELS AVAILABLE - JUNE

These boards use less power, have smaller footprint & cardboard packaging has been replaced by foam packaging which is better for the environment!



Panasonic UB5838C

Share, save and print notes from your whiteboard with the Panasonic range of Electronic Whiteboards.

Available in sizes from 61" to 78", in both 4:3 and Wide screen formats.

Your choice of two or four scrolling screens with Black and White printing or colour scanning.



Let Savetime Visuals consultants assist you with your choice.

LAPTOP STORAGE & CHARGING

VISTA RANGE

LAPBANK

★★★★★
5 YEAR
WARRANTY

High Quality Laptop Security Trolleys



Lapbank 12-1
Product code: LS-6025

A LAPBANK high security trolley is the most effective solution for securing laptop computers and providing mobile storage. Ideal for use where many laptops are under the control of one person and mobile secure storage is of vital importance. Securely store and charge 12, 16 or 20 laptops at any time, in one location.

Complete with on-board charging kit and cable management system.

Security

- Fully welded solid steel construction provides structural integrity and strength where it matters most
- Two x 7 lever safe locks, per door
- Heavy duty full length piano hinges
- Secure wall & floor docking option available

Charging

- Surge protected powerboard supplied with all units
- Kept simple by using your own laptop/notebook chargers
- Cable management kit included
- All bays ventilated to prevent heat build-up
- Lockable charging zone doors on 16-4W & 20-4W models

Wireless zone

- Additional shelf provided on 16-4W & 20-4W models to house wireless kit

Ease of use

- Smooth and easy to move
- 130mm heavy duty swivel brake castors for easy roll
- Recessed top with non-slip mat



Lapbank 16-4W
Product code: LS-6030



Lapbank 20-4W
Product code: LS-6040



LAPTOP STORAGE & CHARGING

LOCK&DOCK GILKON RANGE

GILKON 2LC-MT14

- 14 Bay Lock & Dock Laptop Storage Trolley
- Available with alternating Bay Charger, Eco Charger and Docking Station
- Vertical storage



GILKON 2LCMT-16

- 16 Bay Lock & Dock Laptop Storage Trolley
- Available with alternating Bay Charger, Eco Charger and Docking Station
- Horizontal storage



GILKON 2LC MT-28 PC VAULT

- 28 Bay Lock & Dock Laptop Computer Storage Trolley
- Available with alternating Bay Charger, Eco Charger and Docking Station
- Vertical storage
- 3 point locking system



GILKON I'M SAFE IPAD TROLLEY

Simultaneously recharge & sync 32 iPads

- Storage bay with felt lining
- Gliding drawers
- Removable baskets
- A specially designed lockable work space for the computer used to sync the iPads.
- Compact mobile design
- Easy to share one unit between multiple classrooms
- Eco-friendly powder coating which is lead free.



GILKON ELEMENTARY TROLLEY

- NEW Eco System V3.0 Eliminates safety hazards
- Holds and charges up to 16 laptops
- Affordable, high quality and safe storage option



GILKON TILTTECH

- Lock AND Dock Laptop Computer Storage Trolley
- Secure tilt action storage compartments.
- Available in 7, 14 and 28 Bay



GLOSSARY AND TERMS

Aspect Ratio is the ratio of image width to image height. Standard television, video or Windows XP presentations are 4:3 or 1.33:1. Widescreen movies, Windows Vista or Windows 7 presentations are 1.78:1 or 16:9 times the height.

3LCD Projector Technology (3 colour Liquid Crystal Display) is a common 3 colour system for projecting images. It uses dichroic mirrors to separate the RGB components of white light coming from a projection lamp. Each color is then fed to separate LCD panels which control the amount of coloured light that passes through.

Digital signage is a form of electronic display that shows television programming, menus, information, advertising and other messages.

DLP Projector Technology (Digital Light Processing) is a commercial name for a display technology from Texas Instruments (TI). It consists of an array of mirrors where each mirror represents a pixel element.

Full HD or HD refers to any video system of higher resolution than standard-definition video, and most commonly involves display resolutions of 1280 x 720 pixels (720p - High Definition) or 1920 x 1080 pixels (1080i/1080p – Full High Definition).

HDMI (High-Definition Multimedia Interface) is a compact audio/video interface for transferring encrypted and uncompressed digital audio/video data from a HDMI-compliant device. HDMI compliant devices can include Computers, Tablet Computers, Projectors, Game Consoles, Blu-Ray Disc Players and Set Top Boxes.

Keystone Correction is required when a projector is not well aligned with the screen. This process allows the image to be made rectangular by adjusting optics, making mechanical adjustments or applying digital scaling to the image.

iOS (formerly **iPhone OS**) is a mobile operating system developed and distributed by Apple Inc. Usually wherever you see this reference an application is available for Download from Apples App Store, or iTunes for use with the equipment.

Throw Distance

Short Throw projectors allow users to create big pictures in tight spaces, without concerns about shadows obstructing the image or light shining in the presenter's face.

Ultra Short Throw projectors offer large screen projection from small throw distances. If you are using an interactive whiteboard or only have a small meeting room or classroom, ultra short throw projectors are a good choice.

A **Video Wall** consists of multiple computer monitors, video projectors, or television sets tiled together contiguously or overlapped in order to form one large screen.

**Save Time Visuals specialise in supply and installation of Audio Visual Systems.
The Quality of Our Service is what sets us apart from the others.**

We have the ability and experience to work off given plans at any site. Our Occupational Health and Safety procedures ensure the risk of injury is minimised. We are also compliant with the National Code of Practice for the Construction Industry in accordance with the Government Implementation Guidelines.

We understand the challenges you are facing when it comes to Audio Visual solutions in this ever-changing industry. Our high standard of ethics, integrity and wealth of experience ensures that we evaluate and deliver the most suitable and reliable solution to meet your requirement.

LET US TAKE YOUR VISION AND MAKE IT AN AFFORDABLE REALITY

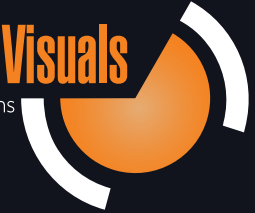


20 YEARS OF SERVICE EXCELLENCE

Unit 13, 45 Normanby Rd
Notting Hill VIC 3168



Save Time Visuals
audio visual solutions



1300 658 986

www.savetimevisuals.com.au | www.digitalsignagemelbourne.com.au