

# Panasonic®

Weights and dimensions shown are approximate. Depending on the temperature or humidity conditions, uneven brightness may be observed. This is not a malfunction. This unevenness will disappear while applying current continuously. If not, consult the distributor. Specifications and appearance are subject to change without notice. Product availability differs depending on region and country. This product may be subject to export control regulations. Windows, and PowerPoint are trademarks of Microsoft Corporation in the United States and other countries. Android is a registered trademark or trademark of Google Inc. Macintosh, Mac, Mac OS X, iPad, iPhone, iPod touch and iTunes are trademarks of Apple Inc., registered in the U.S. and other countries. Intel® is registered trademark or trademark of Intel Corporation, registered in the U.S. and other countries and regions or registered trademarks. HDMI, the HDMI logo, and High-Definition Multimedia Interface are trademarks or registered trademarks of HDMI Licensing LLC in the United States and other countries. Crestron Connected™ is a trademark of Crestron Electronics, Inc. Miracast are trademarks or registered trademarks of Wi-Fi Alliance. HDBaseT is a trademark of the HDBaseT Alliance. Cisco WebEx is a trademark or registered trademark of Cisco Systems, Inc. and/or its affiliated entities in the United States and other countries. All other trademarks are the property of their respective trademark owners. Images on screen are simulated. © 2022 Panasonic Corporation. All rights reserved.



Mobile App -  
The information of the Panasonic projectors and  
professional displays from your iOS/Android devices.  
[panasonic.net/cns/prodisplays/support/mobile\\_app/](https://panasonic.net/cns/prodisplays/support/mobile_app/)



For the latest information about Panasonic Professional  
Displays, please visit:  
Professional Display Global Website - [panasonic.net/cns/prodisplays](https://panasonic.net/cns/prodisplays)  
YouTube - [www.youtube.com/PanasonicProDisplay](https://www.youtube.com/PanasonicProDisplay)  
Facebook - [www.facebook.com/panasonicprojectoranddisplay](https://www.facebook.com/panasonicprojectoranddisplay)

All information included here is valid as of January 2022

CT22-U01PF  
Printed in Japan.

# Panasonic

## BUSINESS



## Professional DISPLAYS

### Line-up Catalog January 2022



Worldwide  
Olympic Partner



Worldwide  
Paralympic Partner



# Panasonic Professional Displays Lineup

High Brightness

## SQ1H Series

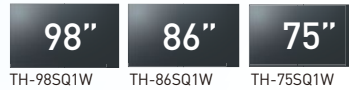
1200cd/m<sup>2</sup>  
\*TH-75SQ1H: 1500 cd/m<sup>2</sup>



\*Actual resolution : 3840 x 2160p

## SQ1 Series

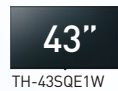
500cd/m<sup>2</sup>



\*Actual resolution : 3840 x 2160p

## SQE1 Series

500cd/m<sup>2</sup>

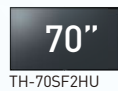


\*Actual resolution : 3840 x 2160p



## SF2H Series

700cd/m<sup>2</sup>



Entry

## EQ1 Series

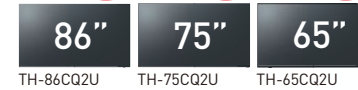
350cd/m<sup>2</sup>



\*Actual resolution : 3840 x 2160p (86EQ1/75EQ1 only)

## CQ2 Series

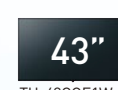
400cd/m<sup>2</sup>



\*Actual resolution : 3840 x 2160p

## CQE1 Series

400cd/m<sup>2</sup>  
\*TH-98CQE1: 500 cd/m<sup>2</sup>



\*Actual resolution : 3840 x 2160p (98CQE1 only)



\* The availability varies depending on model.

★ The playable application format, GUI and operation procedure for the SQE1 and CQE1 Series' Media Player function are different from those of other models.

# Panasonic Professional Displays Lineup

## Video Wall

VF2H	700cd/m <sup>2</sup>	55"	TH-55VF2HW
VF2	500cd/m <sup>2</sup>	55"	TH-55VF2W
LFV9	500cd/m <sup>2</sup>	55"	TH-55LFV9U



## Touch Screen

BQ1 Series	500cd/m <sup>2</sup>	75"	TH-75BQ1W
		65"	TH-65BQ1W

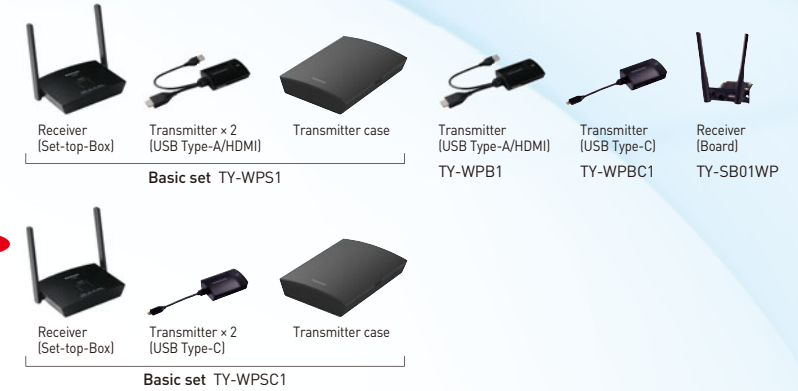


\*Actual resolution: 3840 x 2160p

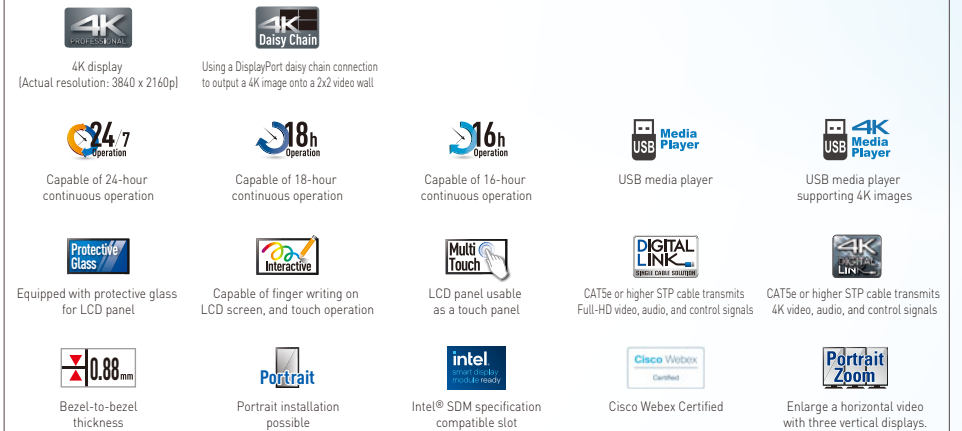
## Wireless Presentation System

### WP Series

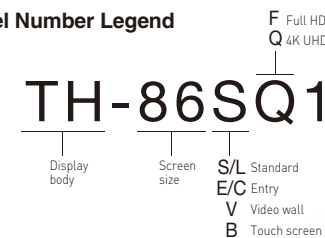
### PressIT



### Pict Descriptions



### Model Number Legend



# SQ1H/SQ1 Series



High Brightness

Standard

Model no.	TH-86SQ1HW	TH-75SQ1HW	TH-98SQ1W	TH-86SQ1W
Screen Size (Diagonal)/Aspect Ratio	86-inch class (2174.2mm)/16:9	75-inch class (1892.7mm)/16:9	98-inch class (2476.9 mm)/16:9	86-inch class (2174.2 mm)/16:9
Effective Display Area (W x H)	74.60" x 41.96" (1895.0 x 1065.9 mm)	64.94" x 36.53" (1649.6 x 927.9 mm)	84.99" x 47.80" (2158.8 x 1214.3 mm)	74.60" x 41.96" (1895.0 x 1065.9 mm)
Resolution (H x V)	3840 x 2160	3840 x 2160	3840 x 2160	3840 x 2160
Brightness (Typ)	1200 cd/m <sup>2</sup>	1500 cd/m <sup>2</sup>	500 cd/m <sup>2</sup>	500 cd/m <sup>2</sup>
Contrast Ratio	1200:1	1200:1	1300:1	1200:1
Dynamic Contrast Ratio	50000:1	50000:1	50000:1	50000:1
Response Time	8.0 ms (G to G)	10.0 ms (G to G)	8 ms (G to G)	8 ms (G to G)
Viewing Angle (Horizontal/Vertical)	178°/ 178° (CR>10)	178°/ 178° (CR>10)	178°/178° (CR≥10)	178°/178° (CR≥10)
Panel Surface Treatment	Anti-glare low reflection type (Haze 3 %)	Anti-Glare type (Haze 1 %)	Anti-Glare (Haze 28 %)	Anti-Glare (Haze 28 %)
HDMI In	HDMI TYPE-A connector x 2 (HDCP2.2)		HDMI TYPE-A Connector x 2 <sup>1</sup>	
DisplayPort In	DisplayPort x 1 (HDCP2.2)		DisplayPort x 1	
DisplayPort Out	DisplayPort x 1 (HDCP1.4)		DisplayPort x 1	
DVI-D In	DVI-D 24-pin x 1		DVI-D 24-pin x 1	
Audio In (L/R)	Stereo Mini Jack (Φ 3.5 mm) x 1 0.5 V [rms]		Stereo Mini Jack (M3) x 2 (Shared with PC In)	
PC In	—		Mini D-sub 15-pin x 1 (Female) <sup>2</sup>	
Audio In (L/R)	—		Stereo Mini Jack (M3) x 2 (Shared with DVI-D In)	
Audio Out	Stereo Mini Jack (Φ 3.5 mm) x 1 0.5 V [rms], Variable (- ∞ - 0 dB) (1 kHz 0 dB Input, 10 k Ω Load)		Stereo Mini Jack (M3) x 1	
Serial In	D-sub 9-pin x 1, RS-232C Compatible		D-sub 9-pin x 1, RS232C Compatible	
LAN	RJ45 x 1 10BASE-T/100BASE-TX, Compatible with PLink™		RJ45 x 1, 10 BASE-T / 100 BASE-TX, Compatible with PLink™	
DIGITAL LINK/LAN	RJ45 x 1 Compatible with Long reach mode and PLink™, 100BASE-TX (HDCP2.2)		RJ45 x 1, 100 BASE-TX, Compatible with long reach mode and PLink™	
IR In/Out	Stereo Mini Jack (Φ 3.5 mm) x 1 / x 1		Stereo Mini Jack (M3) x 1 / x 1	
USB	USB connector (TYPE A) x 2, DC 5 V/2 A, DC 5 V/1 A (USB3.0 is supported)		USB Connector (TYPE-A) x 2, DC 5 V/2 A, DC 5V/1A (USB 3.0 Supported)	
Sensor	4-pole sub-mini jack (Φ 2.5 mm) x 1		—	
Function Slot	x1 (Intel® SDM Specification Capability)		x1 (Intel® SDM Specification Capability)	
Power Requirements	110-127V AC, 50 Hz/60 Hz		110-127 V AC, 50 Hz/60 Hz	
Power Consumption	735 W	720 W	685 W	480 W
Power Off Condition	Approx. 0.3 W	Approx. 0.3 W	Approx. 0.3 W	Approx. 0.3 W
Stand-by Condition	Approx. 0.5 W	Approx. 0.5 W	Approx. 0.5 W	Approx. 0.5 W
Dimensions (W x H x D) *Including handles.	75.95" x 43.31" x 3.75" (1929 x 1100 x 96 mm) <sup>3</sup>	66.28" x 37.9" x 3.75" (1684 x 962 x 96 mm) <sup>3</sup>	86.35" x 49.15" x 3.54" (2194 x 1249 x 90 mm)	75.91" x 43.27" x 3.39" (1928 x 1099 x 86 mm)
Carton Size (W x H x D)	84.5" x 50.8" x 11.1" (2145 x 1290 x 280 mm)	73.7" x 45.0" x 11.1" (1870 x 1143 x 280 mm)	98.9" x 67.1" x 17.7" (2513 x 1704 x 450 mm)	87.6" x 56.2" x 14.7" (2224 x 1427 x 373 mm)
Bezel Width	0.61" (15.5 mm) (T/B/L/R)	0.59" (14.9 mm) (T/B/L/R)	0.63" (16.0 mm) (T/B/L/R)	0.6" (15.2 mm) (T/B/L/R)
Weight	Approx. 127.4 lbs. (57.8 kg)	Approx. 93.0 lbs. (42.2 kg)	Approx. 198.5 lbs. (90.0 kg)	Approx. 145.5 lbs. (66.0 kg)
Gross Weight	Approx. 160.9 lbs. (73 kg)	Approx. 123.4 lbs. (56 kg)	Approx. 304.3 lbs. (138.0 kg)	Approx. 196.3 lbs. (89.0 kg)
Pitch for Wall-Hanging	VESA Compliant 23.6" x 15.8" (600 x 400 mm) M8	VESA Compliant 23.6" x 15.8" (600 x 400 mm) M8	31.5" x 19.7" (800 x 500 mm) VESA Compliant	23.6" x 15.8" (600 x 400 mm) VESA Compliant
Built-in Speaker	20 W [10 W + 10 W]	20 W [10 W + 10 W]	20 W [10 W + 10 W]	
Orientation	Landscape/Portrait <sup>4</sup>	Landscape/Portrait <sup>4</sup>	Landscape/Portrait	
Tilting Angle	Landscape: 0-20 degrees forward Portrait: 0-20 degrees forward	Landscape: 0-20 degrees forward/backward Portrait: 0-20 degrees forward/backward	0-20 degrees forward/backward with landscape/portrait setting	
Operating Environment	Temperature: 32 °F to 104 °F (0 °C to 40 °C) <sup>5</sup> : 32 °F to 95 °F (0 °C to 35 °C) <sup>6</sup> , Humidity: 20% to 80% (No condensation)		Temperature: 32 °F to 104 °F (0 °C to 40 °C) <sup>5</sup> : 32 °F to 95 °F (0 °C to 35 °C) <sup>6</sup> , Humidity: 20% to 80% (No condensation)	
Storage Environment	Temperature: -4 °F to 140 °F (-20 °C to 60 °C), Humidity: 20 % to 80 % (No condensation)		Temperature : -4°F to 140°F (-20 °C to 60 °C) / Humidity: 20% to 80% (Non-condensation)	
Operating Time <sup>7</sup>	24 h/day		24 h/day	
12G-SDI Terminal Board	TY-SB01QS	TY-SB01QS	TY-SB01QS	TY-SB01QS
3G-SDI Terminal Board	TY-SB01SS	TY-SB01SS	TY-SB01SS	TY-SB01SS
Wireless Presentation System Receiver Board	TY-SB01WP	TY-SB01WP	TY-SB01WP	TY-SB01WP
Wall-hanging Bracket	TY-WK98PV1	TY-WK98PV1	TY-WK98PV1	TY-WK98PV1
Early Warning Software <sup>8</sup>	ET-SWA100/105 Series	ET-SWA100/105 Series	ET-SWA100/105 Series <sup>9</sup>	ET-SWA100/105 Series <sup>9</sup>
Digital Interface Box	—	—	ET-YFB100G	ET-YFB100G
DIGITAL LINK Switcher	ET-YFB200G	ET-YFB200G	ET-YFB200G	ET-YFB200G
Auto Display Adjustment Upgrade Kit <sup>10</sup>	—	—	TY-VUK10	TY-VUK10

1: HDCP2.2 supported. 2: RGB/YpPr switchable. 3: Excluding handles. 4: When installing the display vertically, be sure that the power indicator comes to the right side.  
5: For up to 4593 ft (1400 m) altitude. 6: For between 4593 ft to 9186 ft (1400 m to 2800 m) altitude.  
7: In case of long time, the moving image is recommended to be displayed. If you display a still picture for an extended period, the image retention might remain on the screen. However, image retention can gradually disappear by displaying a moving images.  
8: Part number suffix may differ depending on the license type.  
9: Multi Monitoring & Control Software Ver.2.0 or later is required. Part number suffix may differ depending on the license type.  
10: Download the latest Video Wall Manager from Global Website in advance. (<https://panasonicnet/cns/prodisplays/download/software/vwm/>)



# SQ1 Series



	Model no.	TH-75SQ1W	TH-65SQ1WA		TH-55SQ1WA	TH-49SQ1WA
DISPLAY PANEL	Screen size (Diagonal)/Aspect Ratio	75-inch class (1892.7 mm)/16:9	65-inch class (1638.9 mm)/16:9		55-inch class (1387.8 mm)/16:9	49-inch class (1232.0 mm)/16:9
	Effective Display Area (W x H)	64.94" x 36.53" (1649.6 x 927.9 mm)	56.23" x 31.63" (1428.4 x 803.5 mm)		47.62" x 26.78" (1209.6 x 680.4 mm)	42.27" x 23.77" (1073.8 x 604.0 mm)
	Resolution (H x V)	3840 x 2160	3840 x 2160		3840 x 2160	3840 x 2160
	Brightness	500 cd/m <sup>2</sup>	500 cd/m <sup>2</sup>		500 cd/m <sup>2</sup>	500 cd/m <sup>2</sup>
	Contrast Ratio	1200:1	1200:1		1100:1	1100:1
	Response Time	8.0 ms (G to G)	8.0 ms (G to G)		8.0 ms (G to G)	8.0 ms (G to G)
	Viewing Angle (Horizontal/Vertical)	178° / 178° (CR≥10)	178° / 178° (CR≥10)		178° / 178° (CR≥10)	178° / 178° (CR≥10)
	Panel Surface Treatment	Anti-Glare (Haze 28 %)	Anti-Glare Type (Haze 1 %)		Anti-Glare (Haze 28 %)	Anti-Glare (Haze 28 %)
TERMINAL	HDMI In	HDMI TYPE A Connector x 2 (HDCP2.2 supported)			HDMI TYPE A Connector x 2 (HDCP2.2 supported)	
	DisplayPort In	DisplayPort x 1 (HDCP2.2 supported) <sup>1</sup>			DisplayPort x 1 (HDCP2.2 supported) <sup>1</sup>	
	DisplayPort Out	DisplayPort x 1 (HDCP1.4 supported) <sup>1</sup>			DisplayPort x 1 (HDCP1.4 supported) <sup>1</sup>	
	USB	USB Connector (TYPE-A) x 2, DC 5 V/2 A, DC 5V/1A (USB 3.0 Supported)			USB Connector (TYPE-A) x 2, DC 5 V/2 A, DC 5V/1A (USB 3.0 Supported)	
	DVI-D In	DVI-D 24-pin x 1 (DVI Revision 1.0 Compliant), HDCP 1.1 compatible			DVI-D 24-pin x 1 (DVI Revision 1.0 Compliant), HDCP 1.1 compatible	DVI-D 24-pin x 1
	Audio In (L/R)	Stereo Mini Jack (M3) x 2 (Shared with PC In)			Stereo Mini Jack (M3) x 2 (Shared with PC In)	Stereo Mini Jack (M3) x 2 (Shared with PC In)
	PC In	Mini D-sub 15-pin x 1 (Female)			Mini D-sub 15-pin x 1 (Female)	
	Audio In (L/R)	Stereo Mini Jack (M3) x 2 (Shared with DVI-D In)			Stereo Mini Jack (M3) x 2 (Shared with DVI-D In)	
	Audio Out	30 W (15 W + 15 W) 10% THD			30 W (15 W + 15 W) 10% THD	
	Serial In	D-Sub 9-pin x 1, RS232C Compatible			D-Sub 9-pin x 1, RS232C Compatible	
	DIGITAL LINK	RJ45 x 1, 100 BASE-TX, Compatible with long reach mode and PLink™			RJ45 x 1, 100 BASE-TX, Compatible with long reach mode and PLink™	
GENERAL	LAN	RJ45 x 1, 10 BASE-T / 100 BASE-TX, Compatible with PLink™			RJ45 x 1, 10 BASE-T / 100 BASE-TX, Compatible with PLink™	
	IR In/Out	Stereo Mini Jack (M3) x 1/ x 1			Stereo Mini Jack (M3) x 1/ x 1	
	Function Slot	x1 (Intel® SDM specification)			x1 (Intel® SDM specification)	
	Power Requirements	110-127 V AC, 50 Hz/60 Hz	110-127 V AC, 50 Hz/60 Hz		110-127 V AC, 50 Hz/60 Hz	110-127 V AC, 50 Hz/60 Hz
	Power Consumption	385 W	320 W		300 W	285 W
	Power Off Condition	Approx. 0.3 W	Approx. 0.3 W		Approx. 0.3 W	Approx. 0.5 W
	Stand-by Condition	Approx. 0.5 W	Approx. 0.5 W		Approx. 0.5 W	Approx. 0.3 W
	Dimensions (W x H x D) *Including handles.	66.15" x 37.75" x 2.87" (1681 x 959 x 73 mm)	57.40" x 32.90" x 3.02" (1458 x 836 x 77 mm)		48.82" x 28.09" x 2.91" (1240 x 714 x 74 mm)	43.48" x 25.08" x 2.88" (1105 x 637 x 74 mm)
	Carton Size (W x H x D)	72.13" x 50.52" x 11.03" (1832 x 1283 x 280 mm)	64.7" x 40.9" x 9.8" (1642 x 1037 x 248 mm)		55.3" x 34.6" x 8.0" (1404 x 879 x 203 mm)	49.2" x 31.5" x 7.8" (1248 x 800 x 185 mm)
	Bezel Width	T/B/L/R: 0.58" (14.8 mm)	T: 0.48" (12.2 mm), B: 0.62" (15.8 mm), L/R: 0.50" (12.7 mm)		T: 0.48" (12.2 mm), B: 0.62" (15.8 mm), L/R: 0.50" (12.7 mm)	T/B: 0.56" (14.2 mm), L/R: 0.51" (12.9 mm)
	Weight	Approx. 123.5 lbs. (56.0 kg)	Approx. 79.4 lbs. (36.0 kg)		Approx. 56.3 lbs. (25.5 kg)	Approx. 46.3 lbs. (21.0 kg)
	Gross Weight	Approx. 156.6 lbs. (71.0 kg)	Approx. 103.7 lbs. (47.0 kg)		Approx. 75.0 lbs. (34.0 kg)	Approx. 59.6 lbs. (27.0 kg)
OPTIONS	Pitch for Wall-Hanging	VESA compliant 23.6" x 15.8" (600 x 400 mm)	VESA compliant 15.8" x 15.8" (400 x 400 mm)		VESA compliant 15.8" x 15.8" (400 x 400 mm)	VESA compliant 15.8" x 15.8" (400 x 400 mm)
	Built-in Speaker	Yes	Yes		Yes	Yes
	Orientation	Landscape/Portrait <sup>2</sup>			Landscape/Portrait <sup>2</sup>	Landscape/Portrait <sup>2</sup>
	Tilting Angle <sup>3</sup>	Landscape setting: 0 - 45 degrees forward/backward Portrait setting: 0 - 20 degrees forward/backward	Landscape setting: 0 - 45 degrees forward/backward Portrait setting: 0 - 45 degrees forward/backward		Landscape setting: 0 - 45 degrees forward/backward Portrait setting: 0 - 45 degrees forward/backward	Landscape setting: 0 - 45 degrees forward/backward Portrait setting: 0 - 45 degrees forward/backward
	Operating Environment	Temperature: 32 °F to 104 °F (0 °C to 40 °C) <sup>4</sup> /32 °F to 95 °F (0 °C to 35 °C) <sup>5</sup> , Humidity: 20 % to 80 % (No Condensation)			Temperature: 32 °F to 104 °F (0 °C to 40 °C) <sup>4</sup> /32 °F to 95 °F (0 °C to 35 °C) <sup>5</sup> , Humidity: 20 % to 80 % (No Condensation)	
	Storage Environment	Temperature: -4 °F to 140 °F (-20 °C to 60 °C), Humidity: 20 % to 80 % (No Condensation)			Temperature: -4 °F to 140 °F (-20 °C to 60 °C), Humidity: 20 % to 80 % (No Condensation)	
	Operating Time <sup>6</sup>	24 h/day			24 h/day	
	12G-SDI Terminal Board	TY-SB01QS	TY-SB01QS		TY-SB01QS	TY-SB01QS
	3G-SDI Terminal Board	TY-SB01SS	TY-SB01SS		TY-SB01SS	TY-SB01SS
	Wireless Presentation System Receiver Board	TY-SB01WP	TY-SB01WP		TY-SB01WP	TY-SB01WP
	Pedestal	TY-ST55PE9	TY-ST55PE9		TY-ST55PE9	TY-ST43PE9
	Wall-Hanging Bracket	TY-WK98PV1	TY-WK98PV1		—	—
	Digital Interface Box	ET-YFB100G	ET-YFB100G		ET-YFB100G	ET-YFB100G
	DIGITAL LINK Switcher	ET-YFB200G	ET-YFB200G		ET-YFB200G	ET-YFB200G
	Early Warning Software <sup>7</sup>	ET-SWA100/105 Series	ET-SWA100/105 Series		ET-SWA100/105 Series	ET-SWA100/105 Series
	Auto Display Adjustment Upgrade Kit <sup>8</sup>	TY-VUK10	TY-VUK10		TY-VUK10	TY-VUK10

1: Input: HDCP 2.2 Output: NG / Input: HDCP 1.4 Output: HDCP 1.4 / Input: No HDCP Output: No HDCP

2: When installing the display vertically, be sure that the power indicator comes to the right side.

3: Please contact your sales representative with regard to the tilt angle before installation.

4: For up to 4593 ft (1400 m) altitude.

5: For between 4593 ft (1400m) to 9186 ft (2800 m) altitude.

6: In case of long time, the moving image is recommended to be displayed. If you display a still picture for an extended period, the image retention might remain on the screen. However, image retention can gradually disappear by displaying a moving images.

7: Multi Monitoring & Control Software Ver. 2.1 or later is required. Part number suffix may differ depending on the license type.

8: Download the latest Video Wall Manager from Global Website in advance. (<https://panasonic.net/cns/prodisplays/download/software/vwm/>)

These terminal boards are able to input 12G-SDI/3G-SDI signals into displays supporting Intel® SDM specification slots.

12G-SDI Terminal Board  
**TY-SB01QS**

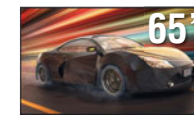
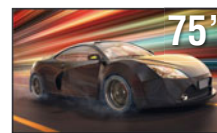
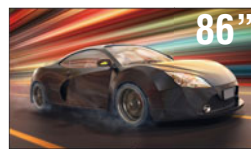
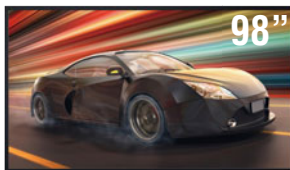


3G-SDI Terminal Board  
**TY-SB01SS**



\* The main software version of the display that supports these terminal boards depend on the model. See pages 44-49 for compatible models.

# SQE1 Series



Model no.	TH-98SQE1W	TH-86SQE1WA		TH-75SQE1W	TH-65SQE1W
Screen Size (Diagonal)/Aspect Ratio	98-inch class (2476.9 mm)/16:9	86-inch class (2174.2 mm)/16:9		75-inch class (1892.7 mm)/16:9	65-inch class (1638.9 mm)/16:9
Effective Display Area (W x H)	84.99" x 47.80" (2158.8 x 1214.3 mm)	74.60" x 41.96" (1895.0 x 1065.9 mm)		64.94" x 36.53" (1649.6 x 927.9 mm)	56.23" x 31.63" (1428.4 x 803.5 mm)
Resolution (H x V)	3840 x 2160	3840 x 2160		3840 x 2160	3840 x 2160
Brightness (Typ)	500 cd/m <sup>2</sup>	500 cd/m <sup>2</sup>		500 cd/m <sup>2</sup>	500 cd/m <sup>2</sup>
Contrast Ratio	1200:1	1100:1		1200:1	1200:1
Dynamic Contrast Ratio	50000:1	50000:1		50000:1	50000:1
Response Time	8.0 ms (G to G)	8.0 ms (G to G)		8.0 ms (G to G)	8.0 ms (G to G)
Viewing Angle (Horizontal/Vertical)	178°/178° (CR>10)	178° / 178° (CR≥10)		178°/178° (CR>10)	178°/178° (CR>10)
Panel Surface Treatment	Anti-Glare (Haze 25 %)	Anti-Glare Low Reflection (Haze 28 %)		Anti-Glare Low Reflection (Haze 3 %)	Anti-Glare (Haze 1 %)
HDMI In	HDMI TYPE A Connector x 4 (HDCP 2.2 supported)			HDMI TYPE A Connector x 4 (HDCP 2.2 supported)	
DisplayPort In	DisplayPort x 1			DisplayPort x 1	
DisplayPort Out	DisplayPort x 1			DisplayPort x 1	
USB	USB Connector (TYPE-A) x 2, (Type-C) x 1, Internal (Type-A) x 1			USB Connector (TYPE-A) x 2, (Type-C) x 1, Internal (Type-A) x 1	
PC In	Mini D-sub 15-pin x 1 (Female)			Mini D-sub 15-pin x 1 (Female)	
Audio In (L/R)	Pin Jack Terminal (L/R) x 1			Pin Jack Terminal (L/R) x 1	
Audio Out	Stereo Mini Jack (M3) x 1, SPDIF x 1			Stereo Mini Jack (M3) x 1, SPDIF x 1	
Serial In	D-sub 9-pin x 1 (Female), RS-232C Compatible			D-sub 9-pin x 1 (Female), RS-232C Compatible	
LAN	RJ45 x 1			RJ45 x 1	
IR In	Stereo Mini Jack (M3) x 1			Stereo Mini Jack (M3) x 1	
Function Slot	x1 (Intel® SDM Specification Capability)			x1 (Intel® SDM Specification Capability)	
Wi-Fi	Dongle, IEEE 802.11. a/b/g/n/ Dual Wi-Fi CERTIFIED			Built-in, IEEE 802.11. a/b/g/n/ Dual Wi-Fi CERTIFIED	
Power Requirements	110-127 V AC, 50 Hz/60 Hz	110-127 V AC, 50 Hz/60 Hz		110-127 V AC, 50 Hz/60 Hz	110-127 V AC, 50 Hz/60 Hz
Power Consumption	703 W (SLOT not in use: 650 W)	364 W (SLOT not in use: 312 W)		334 W (SLOT not in use: 280 W)	281W (SLOT not in use: 229 W)
Power Off Condition	0 W	0 W		0 W	0 W
Stand-by Condition	Approx. 0.5 W	Approx. 0.5 W		Approx. 0.5 W	Approx. 0.5 W
Dimensions (W x H x D) <sup>1</sup>	87.25" x 50.02" x 3.87" (2216 x 1271 x 99 mm)	75.91" x 43.28" x 3.16" (1929 x 1100 x 81 mm)		66.28" x 38.09" x 3.92" (1684 x 968 x 100 mm)	57.46" x 33.12" x 3.77" (1460 x 842 x 96 mm)
Carton Size (W x H x D)	95.87" x 66.30" x 15.24" (2435 x 1684 x 387 mm)	85.16" x 55.32" x 14.96" (2163 x 1405 x 380 mm)		76.70" x 46.07" x 8.27" (1948 x 1170 x 210 mm)	63.27" x 38.59" x 6.97" (1607 x 980 x 177 mm)
Bezel Width	1.11" (28.2 mm) (T/R/L/B)	0.6" (15.3 mm) (T/R/L/B)		0.62" (15.7 mm) (T/R/L), 0.85" (21.5 mm) (B)	0.58" (14.7 mm) (T/R/L), 0.84" (21.4 mm) (B)
Weight	Approx. 220.1 lbs. (99.8 kg)	Approx. 138.7 lbs. (62.9 kg)		Approx. 82.5 lbs. (37.4 kg)	Approx. 56.9 lbs. (25.8 kg)
Gross Weight	Approx. 330.7 lbs. (150 kg)	Approx. 187.4 lbs. (85.0 kg)		Approx. 114.7 lbs. (52.0 kg)	Approx. 79.4 lbs. (36 kg)
Pitch for Wall-Hanging	VESA Compliant 31.6" x 15.8" (800 x 400 mm)	VESA Compliant 23.6" x 15.8" (600 x 400 mm)		VESA Compliant 23.6" x 15.8" (600 x 400 mm)	VESA Compliant 15.8" x 15.8" (400 x 400 mm)
Built-in Speaker	24 W [12 W + 12 W]	24 W [12 W + 12 W]		24 W [12 W + 12 W]	16 W [8 W + 8 W]
Orientation <sup>2</sup>	Landscape/Portrait			Landscape/Portrait	
Tilting Angle <sup>3</sup>	0-20 degrees forward with landscape/portrait setting			0-20 degrees forward with landscape/portrait setting	
Operating Environment	Temperature: 32 °F to 104 °F (0 °C to 40 °C) for up to 4593 ft (1400 m) altitude/ 32 °F to 95°F (0 °C to 35 °C) for between 4593 ft to 9186 ft (1400 m to 2800 m) altitude Humidity: 20 % to 80 % (No Condensation), Altitude: lower than 9186 ft (2800 m)			Temperature: 32 °F to 104 °F (0 °C to 40 °C) for up to 4593 ft (1400 m) altitude/ 32 °F to 95°F (0 °C to 35 °C) for between 4593 ft to 9186 ft (1400 m to 2800 m) altitude Humidity: 20 % to 80 % (No Condensation), Altitude: lower than 9186 ft (2800 m)	
Storage Environment	Temperature: -4 °F to 140 °F (-20 °C to 60 °C), Humidity: 20 % to 80 % (No Condensation)			Temperature: -4 °F to 140 °F (-20 °C to 60 °C), Humidity: 20 % to 80 % (No Condensation)	
Operating Time <sup>4</sup>	24 h/day			24 h/day	
12G-SDI Terminal Board	TY-SB01QS	TY-SB01QS		TY-SB01QS	TY-SB01QS
Wireless Presentation System Receiver Board	TY-SB01WP	TY-SB01WP		TY-SB01WP	TY-SB01WP
Early Warning Software <sup>5</sup>	ET-SWA100/105 Series	ET-SWA100/105 Series		ET-SWA100/105 Series	ET-SWA100/105 Series

1: Excluding remote control receiver.

2: When installing the display vertically, be sure that the power indicator comes to the right side.

3: Please contact your sales representative with regard to the tilt angle before installation.

4: In case of long time, the moving image is recommended to be displayed. If you display a still picture for an extended period, the image retention might remain on the screen. However, image retention can gradually disappear by displaying a moving images.

5: Multi Monitoring & Control Software Ver.2.1 or later is required. Suffix of the part number may differ depending on the license type.

# SQE1 Series



Model no.	TH-55SQE1W	TH-49SQE1W	TH-43SQE1W
Screen Size (Diagonal)/Aspect Ratio	55-inch class (1387.8 mm)/16:9	49-inch class (1232.0 mm)/16:9	43-inch class (1079.8 mm)/16:9
Effective Display Area (W x H)	47.62" x 26.78" (1209.6 x 680.4 mm)	42.47" x 23.77" (1073.8 x 604.0 mm)	37.05" x 20.84" (941.1 x 529.4 mm)
Resolution (H x V)	3840 x 2160	3840 x 2160	3840 x 2160
Brightness (Typ)	500 cd/m <sup>2</sup>	500 cd/m <sup>2</sup>	500 cd/m <sup>2</sup>
Contrast Ratio	1200:1	1200:1	1200:1
Dynamic Contrast Ratio	50000:1	50000:1	50000:1
Response Time	8.0 ms (G to G)	8.0 ms (G to G)	8.0 ms (G to G)
Viewing Angle (Horizontal/Vertical)	178°/178° (CR>10)	178°/178° (CR>10)	178°/178° (CR>10)
Panel Surface Treatment	Anti-Glare (Haze 1 %)	Anti-Glare (Haze 1 %)	Anti-Glare (Haze 1 %)
HDMI In	HDMI TYPE A Connector x 4 (HDCP 2.2 supported)		HDMI TYPE A Connector x 4 (HDCP 2.2 supported)
DisplayPort In	DisplayPort x 1		DisplayPort x 1
DisplayPort Out	DisplayPort x 1		DisplayPort x 1
USB	USB Connector (TYPE-A) x 2, (Type-C) x 1, Internal (Type-A) x 1		USB Connector (TYPE-A) x 2, (Type-C) x 1, Internal (Type-A) x 1
PC In	Mini D-sub 15-pin x 1 (Female)		Mini D-sub 15-pin x 1 (Female)
Audio In (L/R)	Pin Jack Terminal (L/R) x 1		Pin Jack Terminal (L/R) x 1
Audio Out	Stereo Mini Jack (M3) x 1, SPDIF x 1		Stereo Mini Jack (M3) x 1, SPDIF x 1
Serial In	D-sub 9-pin x 1 (Female), RS-232C Compatible		D-sub 9-pin x 1 (Female), RS-232C Compatible
LAN	RJ45 x 1		RJ45 x 1
IR In	Stereo Mini Jack (M3) x 1		Stereo Mini Jack (M3) x 1
Function Slot	x1 (Intel® SDM Specification Capability)		x1 (Intel® SDM Specification Capability)
Wi-Fi	Built-in, IEEE 802.11. a/b/g/n/ Dual Wi-Fi CERTIFIED		Built-in, IEEE 802.11. a/b/g/n/ Dual Wi-Fi CERTIFIED
Power Requirements	110-127 V AC, 50 Hz/60 Hz	110-127 V AC, 50 Hz/60 Hz	110-127 V AC, 50 Hz/60 Hz
Power Consumption	197 W (SLOT not in use: 143 W)	186 W (SLOT not in use: 133 W)	172 W (SLOT not in use: 119 W)
Power Off Condition	0 W	0 W	0 W
Stand-by Condition	Approx. 0.5 W	Approx. 0.5 W	Approx. 0.5 W
Dimensions (W x H x D) <sup>1</sup>	48.75" x 28.02" x 4.09" (1239 x 712 x 104 mm)	43.37" x 24.98" x 4.11" (1102 x 635 x 105 mm)	38.01" x 21.94" x 4.17" (968 x 558 x 106 mm)
Carton Size (W x H x D)	53.90" x 34.41" x 6.50" (1369 x 874 x 165 mm)	47.84" x 30.52" x 6.50" (1215 x 775 x 165 mm)	41.34" x 28.27" x 7.01" (1050 x 718 x 178 mm)
Bezel Width	0.48" (12.3 mm) (T/R/L), 0.59" (15.1 mm) (B)	0.43" (11 mm) (T/R/L), 0.57" (14.4 mm) (B)	0.38" (9.6 mm) (T/R/L), 0.52" (13.2 mm) (B)
Weight	Approx. 38.0 lbs. (17.2 kg)	Approx. 28.7 lbs. (13 kg)	Approx. 22.7 lbs. (10.3 kg)
Gross Weight	Approx. 53.0 lbs. (24 kg)	Approx. 39.7 lbs. (18 kg)	Approx. 33.1 lbs. (15 kg)
Pitch for Wall-Hanging	VESA Compliant 15.8" x 7.9" (400 x 200 mm)	VESA Compliant 7.9" x 7.9" (200 x 200 mm)	VESA Compliant 7.9" x 7.9" (200 x 200 mm)
Built-in Speaker	16 W [8 W + 8 W]	16 W [8 W + 8 W]	16 W [8 W + 8 W]
Orientation <sup>2</sup>	Landscape/Portrait		Landscape/Portrait
Tilting Angle <sup>3</sup>	0-20 degrees forward with landscape/portrait setting		0-20 degrees forward with landscape/portrait setting
Operating Environment	Temperature: 32 °F to 104 °F (0 °C to 40 °C) for up to 4593 ft (1400 m) altitude/ 32 °F to 95 °F (0 °C to 35 °C) for between 4593 ft to 9186 ft (1400 m to 2800 m) altitude Humidity: 20 % to 80 % (No Condensation), Altitude: lower than 9186 ft (2800 m)		Temperature: 32 °F to 104 °F (0 °C to 40 °C) for up to 4593 ft (1400 m) altitude/ 32 °F to 95 °F (0 °C to 35 °C) for between 4593 ft to 9186 ft (1400 m to 2800 m) altitude Humidity: 20 % to 80 % (No Condensation), Altitude: lower than 9186 ft (2800 m)
Storage Environment	Temperature: -4 °F to 140 °F (-20 °C to 60 °C), Humidity: 20 % to 80 % (No Condensation)		Temperature: -4 °F to 140 °F (-20 °C to 60 °C), Humidity: 20 % to 80 % (No Condensation)
Operating Time <sup>4</sup>	24 h/day		24 h/day
12G-SDI Terminal Board	TY-SB01QS	TY-SB01QS	TY-SB01QS
Wireless Presentation System Receiver Board	TY-SB01WP	TY-SB01WP	TY-SB01WP
Early Warning Software <sup>5</sup>	ET-SWA100/105 Series	ET-SWA100/105 Series	ET-SWA100/105 Series

1: Excluding remote control receiver.

2: When installing the display vertically, be sure that the power indicator comes to the right side.

3: Please contact your sales representative with regard to the tilt angle before installation.

4: In case of long time, the moving image is recommended to be displayed. If you display a still picture for an extended period, the image retention might remain on the screen. However, image retention can gradually disappear by displaying a moving images.

5: Multi Monitoring & Control Software Ver.2.1 or later is required. Suffix of the part number may differ depending on the license type.

## Standard

**Standard equipped a wide range of terminals. Meets a wide range of applications**

Equipped with a DisplayPort input and output and Wi-Fi to enable wireless transmission with a PC. In addition to storefront signage, the SQE1 Series meets a wide range of applications such as a conference monitor and surveillance monitor



**Preinstalled Web Browser Allows for Easy Signage Updates**

The SQE1 series is preinstalled with the web browser. So, it can serve as signage using a without an external device, such as a set-top box or PC, or without a connection cable.



# SF2H Series



Model no.		TH-70SF2HU
DISPLAY PANEL	Screen Size (Diagonal)/Aspect Ratio	70-inch class (1765 mm)/16:9
	Effective Display Area (W x H)	60.5" x 34.0" (1538 x 865 mm)
	Resolution (H x V)	1920 x 1080
	Brightness (Typ) *	700 cd/m <sup>2</sup>
	Contrast Ratio	5000:1
	Dynamic Contrast Ratio	50000:1
	Response Time	8.0 ms (G to G)
	Viewing Angle (Horizontal/Vertical)	176°/176° (CR≥10)
	Panel Surface Treatment	Anti-Glare (Haze 12 %)
TERMINAL	VIDEO In	4-pole Mini Jack (M3) x 1 (Audio In shared with DVI-D In/PC In/Video In)
	Audio In (L/R)	—
	HDMI In	HDMI Type A Connector x 2
	Component/RGB In	—
	Audio In (L/R)	—
	DVI-D In	DVI-D 24-pin x 1 (DVI Revision 1.0 compliant), HDCP 1.1 compatible
	Audio In (L/R)	4-pole Mini Jack (M3) x 1 (Shared with PC/VIDEO In)
	DVI-D Out	DVI-D 24-pin x 1 (DVI Revision 1.0 compliant), HDCP 1.1 compatible
	PC In	Mini D-sub 15-pin x 1 (DDC2B compatible)
	Audio In (L/R)	4-pole Mini Jack (M3) x 1 (Shared with DVI-D/VIDEO In)
	Audio Out (L/R)	Stereo Mini Jack (M3) x 1
	Serial In/Out	D-sub 9-pin x 1/x 1, RS-232C Compatible
GENERAL	DIGITAL LINK	RJ45 x 1, 100BASE-TX, Compatible with PLink™ (Shared with LAN)
	LAN	RJ45 x 1, 100BASE-TX, Compatible with PLink™ (Shared with DIGITAL LINK)
	IR In/Out	Stereo Mini Jack (M3) x 1/x 1
	USB	USB Type A Connector x 1, DC 5 V/1 A (USB 3.0 is not supported)
	Power Requirements	110-127 V AC, 50 Hz/60 Hz
	Power Consumption	235 W
	Power Off Condition	Approx. 0.3 W
	Stand-by Condition	Approx. 0.5 W
	Dimensions (W x H x D)	62.2" x 36.2" x 3.2" (1580 x 919 x 80 mm)
	Carton Size (W x H x D)	67.6" x 41.4" x 13.9" (1715 x 1050 x 351 mm)
	Bezel Width	R/L: 0.73" (18.6 mm), T/B: 0.92" (23.6 mm)
	Weight	Approx. 99.0 lbs. (45.0 kg)
OPTIONS	Gross Weight	Approx. 119.0 lbs. (55.0 kg)
	Pitch for Wall-Hanging	VESA Compliant 15.8" x 15.8" (400 x 400 mm)
	Built-in Speakers	20 W [10 W + 10 W]
	Orientation <sup>1</sup>	Landscape/Portrait (Angle adjustment 0-45 degrees for both left and right: landscape setting only)
	Tilting Angle <sup>1</sup>	0-20 degrees forward/backward with landscape/portrait setting (Angle adjustment is not possible for forward/backward tilting installation.)
	Operating Environment	Temperature: 32 °F to 104 °F (0 °C to 40 °C) <sup>2</sup> / 32 °F to 95 °F (0 °C to 35 °C) <sup>3</sup> / Humidity: 20 % to 80 % (Non-condensation)
	Storage Environment	Temperature: -4 °F to 140 °F (-20 °C to 60 °C) / Humidity: 20 % to 80 % ( Non-condensation)
	Operating Time <sup>4</sup>	24 h/day
	Pedestal	TY-ST75PE9
	Digital Interface Box	ET-YFB100G
	DIGITAL LINK Switcher	ET-YFB200G
	Early Warning Software <sup>5</sup>	ET-SWA100 Series
	Auto Display Adjustment Upgrade Kit <sup>6</sup>	TY-VUK10
	Multi Window Processor <sup>7</sup>	ET-MWP100G

1: Please contact your sales representative with regard to the tilt angle before installation.

2: For up to 4593 ft (1400 m) altitude.

3: For between 4593 ft (1400 m) and 9186 ft (2800 m) altitude.

4: In case of long time, the moving image is recommended to be displayed. If you display a still picture for an extended period, the image retention might remain on the screen. However, image retention can gradually disappear by displaying a moving images.

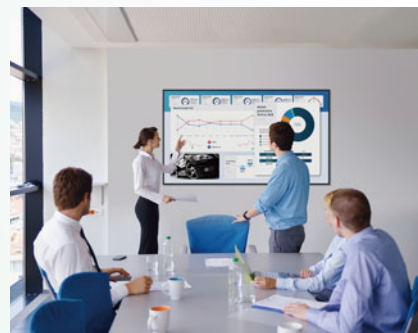
5: Multi Monitoring & Control Software Ver2.0 or later is required. Suffix of the part number may differ depending on the license type.

6: Download the latest Video Wall Manager from Global Website in advance. (<https://panasonic.net/cns/prodisplays/download/software/vwm/>)

7: The availability varies depending on the country.

## Panasonic display ideas for a wide range of applications

### Meeting room



High image quality at 4K. Complex drawings and large amounts of text can be accurately shared. With Panasonic, a wide range of terminals are available. Can be used immediately after installing.

#### Recommended models

- EQ1/CQ2/CQE1 Series >> 16p~
- PressIT >> 28p~

### Control room

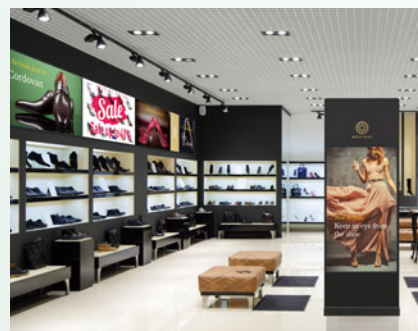


Use a 24/7 operation display where interrupted images are simply not permitted.

#### Recommended models

- SQ1/SQE1 Series >> 7p~
- VF/LFV Series >> 38p~

### Retail shop



For attractive product displays, the 4K model is also recommended for in-store signage. The narrow bezel provides effective space utilization. An easy-to-see angle can also be adjusted. And Content Management Software makes it easy to control signage for individual shops.

#### Recommended models

- EQ1/CQ2/CQE1 Series >> 16p~
- Content Management Software >> 44p

### Classrooms



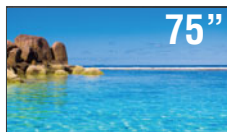
Installation is possible at a forward inclination of up to 20 degrees to maintain legibility when mounted in high places. Displays course materials for easy viewing even in a bright room.

#### Recommended models

- EQ1/CQ2/CQE1 Series >> 16p~



# EQ1 Series



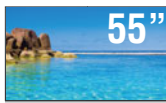
Model no.		TH-86EQ1W	TH-75EQ1W	TH-65EQ1U
DISPLAY PANEL	Screen Size (Diagonal)/Aspect Ratio	86-inch class (2174 mm)/16:9	75-inch class (1892 mm)/16:9	65-inch class (1639 mm)/16:9
	Effective Display Area (W x H)	74.6" x 41.9" (1895 x 1065 mm)	64.9" x 36.5" (1649 x 927 mm)	56.2" x 31.6" (1428 x 803 mm)
	Resolution (H x V)	3840 x 2160	3840 x 2160	3840 x 2160
	Brightness (Typ)	350 cd/m <sup>2</sup>	350 cd/m <sup>2</sup>	350 cd/m <sup>2</sup>
	Contrast Ratio	1200:1	1200:1	4000:1
	Dynamic Contrast Ratio	50000:1	50000:1	50000:1
	Response Time	8 ms (G to G)	8 ms (G to G)	8 ms (G to G)
	Viewing Angle (Horizontal/Vertical)	178°/178° (CR≥10)	178°/178° (CR≥10)	178°/178° (CR≥10)
Panel Surface Treatment		Anti-Glare (Haze 28 %)	Anti-Glare (Haze 28 %)	Anti-Glare (Haze 2 %)
TERMINAL	HDMI In	HDMI TYPE-A Connector x 2 (HDCP2.2 supported)		HDMI TYPE-A Connector x 2 (HDCP2.2 supported)
	VIDEO/AV In	4-pole Mini Jack (M3) x 1 (Audio: Stereo Mini Jack (M3) x 1(Shared with DVI-D/PC In))		4-pole Mini Jack (M3) x 1 (Audio: Stereo Mini Jack (M3) x 1(Shared with DVI-D/PC In))
	DVI-D In	DVI-D 24-pin x 1		DVI-D 24-pin x 1
	Audio In (L/R)	Stereo Mini Jack (M3) x 1 (Shared with AV/PC In)		Stereo Mini Jack (M3) x 1 (Shared with AV/PC In)
	PC In	Mini D-sub 15-pin x 1 (Female)		Mini D-sub 15-pin x 1 (Female)
	Audio In (L/R)	Stereo Mini Jack (M3) x 1 (Shared with AV/DVI-D In)		Stereo Mini Jack (M3) x 1 (Shared with AV/DVI-D In)
	USB	USB Connector (TYPE A) x 1, DC 5 V/2 A (USB 3.0 supported)		USB Connector (TYPE A) x 1, DC 5 V/2 A (USB 3.0 supported)
	Serial In	D-sub 9-pin x 1, RS-232C Compatible		D-sub 9-pin x 1, RS-232C Compatible
GENERAL	DIGITAL LINK	—		—
	LAN	RJ45 x 1, 10BASE-T/100BASE-TX/1000BASE-T, Compatible with PLink™		RJ45 x 1, 10BASE-T/100BASE-TX/1000BASE-T, Compatible with PLink™
	IR In/Out	Stereo Mini Jack (M3) x 1 / x 1		Stereo Mini Jack (M3) x 1 / x 1
	Audio Out	Stereo Mini Jack (M3) x 1		Stereo Mini Jack (M3) x 1
	Power Requirements	110-127 V AC, 50 Hz/60 Hz	110-127 V AC, 50 Hz/60 Hz	110-127 V AC, 50 Hz/60 Hz
	Power Consumption	363 W	296 W	185 W
	Power Off Condition	Approx. 0.3 W	Approx. 0.3 W	Approx. 0.3 W
	Stand-by Condition	Approx. 0.5 W	Approx. 0.5 W	Approx. 0.5 W
OPTIONS	Dimensions (W x H x D) *Including handles.	76.0" x 43.3" x 3.4" (1928 x 1099 x 86 mm)	66.2" x 37.8" x 2.9" (1681 x 959 x 73 mm)	57.5" x 32.9" x 3.3" (1459 x 835 x 82 mm)
	Carton Size (W x H x D)	87.6" x 56.2" x 14.7" (2224 x 1427 x 373 mm)	72.2" x 50.6" x 11.1" (1832 x 1283 x 280 mm)	65.2" x 42.5" x 11.1" (1655 x 1078 x 280 mm)
	Bezel Width	0.6" (15.2 mm) (T/B/L/R)	0.6" (14.8 mm) (T/B/L/R)	0.6" (13.5 mm) (T/R/L), 0.6" (14.5 mm) (B)
	Weight	Approx. 145.5 lbs. (66.0 kg)	Approx. 123.5 lbs. (56.0 kg)	Approx. 59.6 lbs. (27.0 kg)
	Gross Weight	Approx. 196.3 lbs. (89.0 kg)	Approx. 156.6 lbs. (71.0 kg)	Approx. 83.8 lbs. (38.0 kg)
	Pitch for Wall-Hanging	23.6" x 15.8" (600 x 400 mm) VESA Compliant		15.8" x 15.8" (400 x 400 mm) VESA Compliant
	Built-in Speaker	20 W [10 W + 10 W]		20 W [10 W + 10 W]
	Orientation <sup>1</sup>	Landscape/Portrait		Landscape/Portrait
GENERAL	Tilting Angle <sup>2</sup>	0-20 degrees forward/backward with landscape/portrait setting		0-20 degrees forward/backward with landscape/portrait setting
	Operating Environment	Temperature: 32 °F to 104 °F (0 °C to 40 °C) / for up to 4593 ft (1400 m) altitude, 32 °F to 95 °F (0 °C to 35 °C) / Altitude 4593 ft to 9186 ft [1400-2800 m] / Humidity: 20 % - 80 % (No condensation)		Temperature: 32 °F to 104 °F (0 °C to 40 °C) / for up to 4593 ft (1400 m) altitude, 32 °F to 95 °F (0 °C to 35 °C) / Altitude 4593 ft to 9186 ft [1400-2800 m] / Humidity: 20 % to 80 % (No condensation)
	Storage Environment	Temperature: -4 °F to 140 °F (-20 °C to 60 °C) / Humidity: 20 % to 80 % (Non condensation)		Temperature: -4 °F to 140 °F (-20 °C to 60 °C) / Humidity: 20 % to 80 % (Non condensation)
	Operating Time <sup>3</sup>	24 h/day		18 h/day
	Pedestal	—		TY-ST55PE9
	Wall-hanging Bracket	TY-WK98PV1		TY-WK98PV1
	Early Warning Software <sup>4</sup>	ET-SWA100/105 Series		ET-SWA100/105 Series

1: When mounting portrait setting, be sure to mount with the main unit's power lamp facing downward.

2: Please contact your sales representative with regard to the tilt angle before installation.

3: In case of long time, the moving image is recommended to be displayed. If you display a still picture for an extended period, the image retention might remain on the screen. However, image retention can gradually disappear by displaying a moving images.

4: Multi Monitoring & Control Software Ver.2.0 or later is required. Suffix of the part number may differ depending on the license type.



Model no.	TH-55EQ1U	TH-50EQ1U	TH-43EQ1U
DISPLAY PANEL	Screen Size (Diagonal)/Aspect Ratio	55-inch class (1387 mm)/16:9	50-inch class (1257 mm)/16:9
	Effective Display Area (W x H)	47.6" x 26.7" (1209 x 680 mm)	43.1" x 24.2" (1095 x 616 mm)
	Resolution (H x V)	3840 x 2160	3840 x 2160
	Brightness (Typ)	350 cd/m <sup>2</sup>	350 cd/m <sup>2</sup>
	Contrast Ratio	4000:1	4000:1
	Dynamic Contrast Ratio	50000:1	50000:1
	Response Time	8 ms (G to G)	8 ms (G to G)
	Viewing Angle (Horizontal/Vertical)	178°/178° (CR≥10)	178°/178° (CR≥10)
	Panel Surface Treatment	Anti-Glare (Haze 2 %)	Anti-Glare (Haze 2 %)
TERMINAL	HDMI In	HDMI TYPE-A Connector x 2 (HDCP2.2 supported)	HDMI TYPE-A Connector x 2 (HDCP2.2 supported)
	VIDEO/AV In	4-pole Mini Jack (M3) x 1 (Audio: Stereo Mini Jack (M3) x 1 (Shared with DVI-D/PC In))	4-pole Mini Jack (M3) x 1 (Audio: Stereo Mini Jack (M3) x 1 (Shared with DVI-D/PC In))
	DVI-D In	DVI-D 24-pin x 1	DVI-D 24-pin x 1
	Audio In (L/R)	Stereo Mini Jack (M3) x 1 (Shared with AV/PC In)	Stereo Mini Jack (M3) x 1 (Shared with AV/PC In)
	PC In	Mini D-sub 15-pin x 1 (Female)	Mini D-sub 15-pin x 1 (Female)
	Audio In (L/R)	Stereo Mini Jack (M3) x 1 (Shared with AV/DVI-D In)	Stereo Mini Jack (M3) x 1 (Shared with AV/DVI-D In)
	USB	USB Connector (TYPE A) x 1, DC 5 V/2 A (USB 3.0 supported)	USB Connector (TYPE A) x 1, DC 5 V/2 A (USB 3.0 supported)
	Serial In	D-sub 9-pin x 1, RS-232C Compatible	D-sub 9-pin x 1, RS-232C Compatible
	DIGITAL LINK	—	—
	LAN	RJ45 x 1, 10BASE-T/100BASE-TX/1000BASE-T, Compatible with PLink™	RJ45 x 1, 10BASE-T/100BASE-TX/1000BASE-T, Compatible with PLink™
GENERAL	IR In/Out	Stereo Mini Jack (M3) x 1 / x 1	Stereo Mini Jack (M3) x 1 / x 1
	Audio Out	Stereo Mini Jack (M3) x 1	Stereo Mini Jack (M3) x 1
	Power Requirements	110-127 V AC, 50 Hz/60 Hz	110-127 V AC, 50 Hz/60 Hz
	Power Consumption	195 W	178 W
	Power Off Condition	Approx. 0.3 W	Approx. 0.3 W
	Stand-by Condition	Approx. 0.5 W	Approx. 0.5 W
	Dimensions (W x H x D) *Including handles.	48.9" x 28.1" x 2.5" (1240 x 712 x 62 mm)	44.3" x 25.5" x 2.8" (1124 x 647 x 70 mm)
	Carton Size (W x H x D)	53.8" x 34.1" x 7.3" (1365 x 864 x 185 mm)	48.8" x 31.3" x 7.3" (1238 x 795 x 185 mm)
	Bezel Width	0.6" (12.9 mm) (T/R/L), 0.6" (14.7 mm) (B)	0.5" (11.9 mm) (T/R/L), 0.6" (14.4 mm) (B)
	Weight	Approx. 37.5 lbs. (17.0 kg)	Approx. 30.9 lbs. (14.0 kg)
	Gross Weight	Approx. 48.5 lbs. (22.0 kg)	Approx. 41.9 lbs. (19.0 kg)
	Pitch for Wall-Hanging	15.8" x 7.9" (400 x 200 mm) VESA Compliant	15.8" x 15.8" (400 x 400 mm) VESA Compliant
	Built-in Speaker	20 W [10W + 10W]	20 W [10W + 10W]
	Orientation <sup>1</sup>	Landscape/Portrait	Landscape/Portrait
	Tilting Angle <sup>2</sup>	0-20 degrees forward/backward with landscape/portrait setting	0-20 degrees forward/backward with landscape/portrait setting
	Operating Environment	Temperature: 32 °F to 104 °F (0 °C to 40 °C) / for up to 4593 ft (1400 m) altitude, 32 °F to 95 °F (0 °C to 35 °C) / Altitude 4593 ft to 9186 ft [1400-2800 m] / Humidity: 20 % to 80 % (No condensation)	Temperature: 32 °F to 104 °F (0 °C to 40 °C) / for up to 4593 ft (1400 m) altitude, 32 °F to 95 °F (0 °C to 35 °C) / Altitude 4593 ft to 9186 ft [1400-2800 m] / Humidity: 20 % to 80 % (No condensation)
	Storage Environment	Temperature: -4 °F to 140 °F (-20 °C to 60 °C) / Humidity: 20 % to 80 % (Non condensation)	Temperature: -4 °F to 140 °F (-20 °C to 60 °C) / Humidity: 20 % to 80 % (Non condensation)
	Operating Time <sup>3</sup>	18 h/day	18 h/day
OPTIONS	Pedestal	TY-ST43PE8	TY-ST43PE8
	Wall-hanging Bracket	—	—
	Early Warning Software <sup>4</sup>	ET-SWA100/105 Series	ET-SWA100/105 Series

1: When mounting portrait setting, be sure to mount with the main unit's power lamp facing downward.

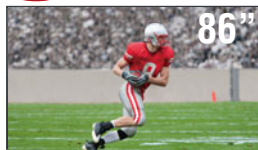
2: Please contact your sales representative with regard to the tilt angle before installation.

3: In case of long time, the moving image is recommended to be displayed. If you display a still picture for an extended period, the image retention might remain on the screen. However, image retention can gradually disappear by displaying a moving images.

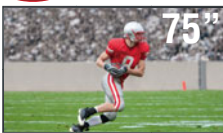
4: Multi Monitoring & Control Software Ver.2.0 or later is required. Suffix of the part number may differ depending on the license type.

# CQ2 Series

NEW



NEW



NEW



▶ Entry

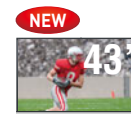
Model no.		TH-86CQ2U	TH-75CQ2U	TH-65CQ2U
DISPLAY PANEL	Screen size (Diagonal)/Aspect Ratio	86-inch class (2174.2 mm)/16:9	75-inch class (1892.7 mm)/16:9	65-inch class (1638.9 mm)/16:9
	Effective Display Area (W x H)	74.60" x 41.96" (1895.0 x 1065.9 mm)	64.9" x 36.5" (650 x 928 mm)	56.23" x 31.63" (1428.4 x 803.5 mm)
	Resolution (H x V)	3840 x 2160	3840 x 2160	3840 x 2160
	Brightness	400 cd/m <sup>2</sup>	400 cd/m <sup>2</sup>	400 cd/m <sup>2</sup>
	Contrast Ratio	1200:1	1200:1	1200:1
	Response Time	13.0 ms (G to G)	8.0 ms (G to G)	8.0 ms (G to G)
TERMINAL	Viewing Angle (Horizontal/Vertical)	178° / 178° (CR>10)	178° / 178° (CR>10)	178° / 178° (CR>10)
	Panel Surface Treatment	Anti-Glare low reflection treatment (Haze 1 %)	Anti-Glare low reflection treatment (Haze 1 %)	Anti-Glare (Haze 1 %)
	HDMI In	HDMI Type A Connector x 3 (HDCP 2.2 Supported)		HDMI Type A Connector x 3 (HDCP 2.2 Supported)
	PC In	Mini D-Sub 15-pin x 1 (Female)		Mini D-Sub 15-pin x 1 (Female)
	Audio In (L/R)	Stereo Mini Jack (M3) x 1 (PC In only)		Stereo Mini Jack (M3) x 1 (PC In only)
	USB	USB Connector (TYPE-A) x 1, DC 5 V/2 A (USB 2.0 Supported)		USB Connector (TYPE-A) x 1, DC 5V/2 A (USB 2.0 Supported)
GENERAL	Serial In	D-Sub 9-pin x 1, RS232C Compatible		D-Sub 9-pin x 1, RS232C Compatible
	RF In (Antenna/Cable)	F Connector x 1, ATSC/NTSC Compatible		F Connector x 1, ATSC/NTSC Compatible
	DIGITAL LINK	—		—
	LAN	RJ45 x 1, 10 BASE-T / 100 BASE-TX		RJ45 x 1, 10 BASE-T / 100 BASE-TX
	Audio Out	Pin Jack (L/R) x 1		Pin Jack (L/R) x 1
	Power Requirements	110-127 V AC, 60 Hz		110-127 V AC, 60 Hz
GENERAL	Power Consumption	369 W		189 W
	Power Off Condition	0 W		0 W
	Stand-by Condition	Approx. 0.5 W		Approx. 0.5 W
	Dimensions (W x H x D) *Including handles.	75.95" x 43.31" x 3.76" (1929 x 1100 x 96 mm)	66.28" x 37.87" x 3.76" (1684 x 962 x 96 mm)	57.58" x 32.97" x 3.76" (1463 x 838 x 94 mm)
	Carton Size (W x H x D)	83.86" x 52.01" x 9.77" (2130 x 1321 x 248 mm)	73.63" x 45.00" x 11.03" (1870 x 1143 x 280 mm)	63.63" x 39.30" x 7.37" (1616 x 998 x 187 mm)
	Bezel Width	T/B/L/R: 0.62" (15.5 mm)	T/B/L/R: 0.59" (14.9 mm)	T/R/L/B: 0.59" (14.9 mm)
	Weight	Approx. 109.8 lbs. (49.8 kg)	Approx. 81.2 lbs. (36.8 kg)	Approx. 64.0 lbs. (29.0 kg)
	Gross Weight	Approx. 152.2 lbs. (69.0 kg)	Approx. 110.3 lbs. (50.0 kg)	Approx. 83.8 lbs. (38.0 kg)
	Pitch for Wall-Hanging	VESA Compliant 23.7" x 15.8" (600 x 400 mm)	VESA Compliant 23.7" x 15.8" (600 x 400 mm)	VESA compliant 15.8" x 15.8" (400 x 400 mm)
	Built-in Speaker	20 W [10 W + 10 W]		20 W [10 W + 10 W]
	Orientation <sup>1</sup>	Landscape		Landscape
	Tilting Angle <sup>1</sup>	0-20 degrees forward with landscape setting		0-20 degrees forward with landscape setting
	Operating Environment	Temperature: 32 °F to 104 °F (0 °C to 40 °C) <sup>2</sup> /32 °F to 95 °F (0 °C to 35 °C) <sup>3</sup> / Humidity: 20% to 80% (No Condensation)		Temperature: 32 °F to 104 °F (0 °C to 40 °C) <sup>2</sup> /32 °F to 95 °F (0 °C to 35 °C) <sup>3</sup> /Humidity: 20% to 80% (No Condensation)
	Storage Environment	Temperature: -4 °F to 140 °F (-20 °C to 60 °C), Humidity: 20% to 80% (No Condensation)		Temperature: -4 °F to 140 °F (-20 °C to 60 °C)/ Humidity: 20% to 80% (No Condensation)
	Operating Time <sup>4</sup>	16 h/day		16 h/day

1: Please contact your sales representative with regard to the tilt angle before installation.

2: For up to 4593 ft (1400 m) altitude.

3: For between 4593 ft (1400m) to 9186 ft (2800 m) altitude.

4: In case of long time, the moving image is recommended to be displayed. If you display a still picture for an extended period, the image retention might remain on the screen. However, image retention can gradually disappear by displaying a moving images.



Model no.		TH-55CQ2U	TH-50CQ2U	TH-43CQ2U
DISPLAY PANEL	Screen size (Diagonal)/Aspect Ratio	55-inch class (1387.8 mm)/16:9	50-inch class (1257 mm)/16:9	43-inch class (1079.8 mm)/16:9
	Effective Display Area (W x H)	47.62" x 54.63" (1209.6 x 680.4 mm)	43.1" x 24.2" (1095 x 616 mm)	37.05" x 20.84" (941.1 x 529.4 mm)
	Resolution (H x V)	3840 x 2160	3840 x 2160	3840 x 2160
	Brightness	400 cd/m <sup>2</sup>	400 cd/m <sup>2</sup>	400 cd/m <sup>2</sup>
	Contrast Ratio	1200:1	4000:1	1200:1
	Response Time	8.0 ms (G to G)	8.0 ms (G to G)	8.0 ms (G to G)
TERMINAL	Viewing Angle (Horizontal/Vertical)	178° / 178° (CR>10)	178° / 178° (CR>10)	178° / 178° (CR>10)
	Panel Surface Treatment	Anti-Glare low reflection (Haze 1 %)	Anti-Glare (Haze 2 %)	Anti-Glare (Haze 1 %)
	HDMI In	HDMI Type A Connector x 3 (HDCP 2.2 Supported)		HDMI Type A Connector x 3 (HDCP 2.2 Supported)
	PC In	Mini D-Sub 15-pin x 1 (Female)		Mini D-Sub 15-pin x 1 (Female)
	Audio In (L/R)	Stereo Mini Jack (M3) x 1 (PC In only)		Stereo Mini Jack (M3) x 1 (PC In only)
	USB	USB Connector (TYPE-A) x 1, DC 5V/2 A (USB 2.0 Supported)		USB Connector (TYPE-A) x 1, DC 5V/2 A (USB 2.0 Supported)
GENERAL	Serial In	D-Sub 9-pin x 1, RS232C Compatible		D-Sub 9-pin x 1, RS232C Compatible
	RF In (Antenna/Cable)	F Connector x 1, ATSC/NTSC Compatible		F Connector x 1, ATSC/NTSC Compatible
	DIGITAL LINK	—		—
	LAN	RJ45 x 1, 10 BASE-T / 100 BASE-TX		RJ45 x 1, 10 BASE-T / 100 BASE-TX
	Audio Out	Pin Jack (L/R) x 1		Pin Jack (L/R) x 1
	Power Requirements	110-127 V AC, 60 Hz	110-127 V AC, 60 Hz	110-127 V AC, 60 Hz
GENERAL	Power Consumption	135 W	138 W	101 W
	Power Off Condition	0 W	0 W	0 W
	Stand-by Condition	Approx. 0.5 W	Approx. 0.5 W	Approx. 0.5 W
	Dimensions (W x H x D)	48.89" x 28.06" x 2.60" (1242 x 713 x 66 mm)	44.43" x 25.56" x 2.60" (1129 x 649 x 66 mm)	38.31" x 22.10" x 2.56" (973 x 562 x 65 mm)
	Carton Size (W x H x D)	53.15" x 33.86" x 6.30" (1350 x 860 x 160 mm)	48.43" x 31.50" x 5.60" (1230 x 800 x 142 mm)	42.13" x 26.50" x 5.56" (1070 x 673 x 141 mm)
	Bezel Width	T/R/L/B: 0.55" (13.9 mm)	T/R/L/B: 0.59" (14.9 mm)	T/R/L/B: 0.55" (13.9 mm)
	Weight	Approx. 38.4 lbs. (17.4 kg)	Approx. 34.0 lbs. (15.4 kg)	Approx. 26.1 lbs. (11.8 kg)
	Gross Weight	Approx. 53.0 lbs. (24.0 kg)	Approx. 44.1 lbs. (20.0 kg)	Approx. 33.1 lbs. (15.0 kg)
	Pitch for Wall-Hanging	VESA compliant 15.8" x 15.8" (400 x 400 mm)		VESA compliant 7.9" x 7.9" (200 x 200 mm)
	Built-in Speaker	20W [10 W + 10 W]		20W [10 W + 10 W]
	Orientation <sup>1</sup>	Landscape	Landscape	Landscape
	Tilting Angle <sup>1</sup>	0-20 degrees forward with landscape setting		0-20 degrees forward with landscape setting
	Operating Environment	Temperature: 32 °F to 104 °F (0 °C to 40 °C) <sup>2</sup> /32 °F to 95 °F (0 °C to 35 °C) <sup>3</sup> / Humidity: 20% to 80% (No Condensation)		Temperature: 32 °F to 104 °F (0 °C to 40 °C) <sup>2</sup> /32 °F to 95 °F (0 °C to 35 °C) <sup>3</sup> /Humidity: 20% to 80% (No Condensation)
	Storage Environment	Temperature: -4 °F to 140 °F (-20 °C to 60 °C), Humidity: 20% to 80% (No Condensation)		Temperature: -4 °F to 140 °F (-20 °C to 60 °C)/ Humidity: 20% to 80% (No Condensation)
	Operating Time <sup>4</sup>	16 h/day	16 h/day	16 h/day

1: Please contact your sales representative with regard to the tilt angle before installation.

2: For up to 4593 ft (1400 m) altitude.

3: For between 4593 ft (1400m) to 9186 ft (2800 m) altitude.

4: In case of long time, the moving image is recommended to be displayed. If you display a still picture for an extended period, the image retention might remain on the screen. However, image retention can gradually disappear by displaying a moving images.



# CQE1 Series



Model no.		TH-98CQE1W	TH-86CQE1W		TH-75CQE1W	TH-65CQE1WA
DISPLAY PANEL	Screen Size (Diagonal)/Aspect Ratio	98-inch class (2476.9 mm)/16:9	86-inch class (2174.2 mm)/16:9		75-inch class (1892.7 mm)/16:9	65-inch class (1638.9 mm)/16:9
	Effective Display Area (W x H)	84.99" x 47.80" (2158.8 x 1214.3 mm)	74.60" x 41.96" (1895.0 x 1065.9 mm)		64.94" x 36.53" (1649.6 x 927.9 mm)	56.23" x 31.63" (1428.4 x 803.5 mm)
	Resolution (H x V)	3840 x 2160	3840 x 2160		3840 x 2160	3840 x 2160
	Brightness (Typ)	500 cd/m <sup>2</sup>	400 cd/m <sup>2</sup>		400 cd/m <sup>2</sup>	400 cd/m <sup>2</sup>
	Contrast Ratio	1200:1	1200:1		1200:1	1200:1
	Dynamic Contrast Ratio	50000:1	50000:1		50000:1	50000:1
	Response Time	8.0 ms (G to G)	8.0 ms (G to G)		8.0 ms (G to G)	8.0 ms (G to G)
TERMINAL	Viewing Angle (Horizontal/Vertical)	178°/178° (CR>10)	178°/178° (CR>10)		178°/178° (CR>10)	178°/178° (CR>10)
	Panel Surface Treatment	Anti-Glare (Haze 25 %)	Anti-Glare Low Reflection (Haze 3 %)		Anti-Glare Treatment (Haze 1 %)	Anti-Glare Type (Haze 1 %)
	HDMI In	HDMI TYPE A Connector x 4 (HDCP 2.2)			HDMI TYPE A Connector x 4 (HDCP 2.2)	
	USB	USB Connector (TYPE-A) x 2, (Type-C) x 1, Internal (Type-A) x 1			USB Connector (TYPE-A) x 2, (Type-C) x 1, Internal (Type-A) x 1	
	PC In	Mini D-sub 15-pin x 1 (Female)			Mini D-sub 15-pin x 1 (Female)	
	Audio In (L/R)	Pin Jack (L/R) x 1			Pin Jack (L/R) x 1	
	Audio Out	Stereo Mini Jack (M3) x 1, SPDIF x 1			Stereo Mini Jack (M3) x 1, SPDIF x 1	
GENERAL	Serial In	D-sub 9-pin x 1 (Female), RS-232C Compatible			D-sub 9-pin x 1 (Female), RS-232C Compatible	
	LAN	RJ45 x 1			RJ45 x 1	
	IR In	Stereo Mini Jack (M3) x 1			Stereo Mini Jack (M3) x 1	
	Wi-Fi	Dongle, IEEE 802.11. a/b/g/n/ Dual Wi-Fi CERTIFIED			Built-in, IEEE 802.11. a/b/g/n/ Dual Wi-Fi CERTIFIED	
	Power Requirements	110-127 V AC, 50 Hz/60 Hz	110-127 V AC, 50 Hz/60 Hz		110-127 V AC, 50 Hz/60 Hz	110-127 V AC, 50 Hz/60 Hz
	Power Consumption	650 W	364 W		307 W	224 W
	Power Off Condition	0 W	0 W		0 W	0 W
OPTIONS	Stand-by Condition	Approx. 0.5 W	Approx. 0.5 W		Approx. 0.5 W	Approx. 0.5 W
	Dimensions (W x H x D) <sup>1</sup>	87.25" x 50.02" x 3.55" (2216 x 1271 x 91 mm)	75.91" x 43.28" x 3.13" (1929 x 1100 x 80 mm)		66.28" x 38.74" x 3.92" (1684 x 968 x 100 mm)	57.46" x 33.82" x 3.15" (1460 x 859 x 80 mm)
	Carton Size (W x H x D)	95.87" x 66.30" x 15.24" (2435 x 1684 x 387 mm)	85.16" x 55.32" x 14.96" (2163 x 1405 x 380 mm)		76.70" x 46.07" x 8.27" (1948 x 1170 x 210 mm)	63.27" x 38.59" x 6.97" (1607 x 980 x 177 mm)
	Bezel Width	1.11" (28.2 mm) (T/R/L/B)	0.6" (15.3 mm) (T/R/L/B)		0.62" (15.7 mm) (T/R/L), 0.85" (21.5 mm) (B)	0.58" (14.7 mm) (T/R/L), 0.84" (21.4 mm) (B)
	Weight	Approx. 219.2 lbs. (99.4 kg)	Approx. 136.1 lbs. (61.7 kg)		Approx. 81.2 lbs. (36.8 kg)	Approx. 55.6 lbs. (25.2 kg)
	Gross Weight	Approx. 330.7 lbs. (150 kg)	Approx. 185.2 lbs. (84.0 kg)		Approx. 112.5 lbs. (51.0 kg)	Approx. 79.4 lbs. (36.0 kg)
	Pitch for Wall-Hanging	VESA Compliant 31.5" x 15.8" (800 x 400 mm)	VESA Compliant 23.6" x 15.8" (600 x 400 mm)		VESA Compliant 23.6" x 15.8" (600 x 400 mm)	VESA Compliant 15.8" x 15.8" (400 x 400 mm)
OPERATIONS	Built-in Speaker	24 W [12W + 12 W]	24 W [12 W + 12 W]		24 W [12 W + 12 W]	16 W [8 W + 8 W]
	Orientation	Landscape (Not support to the portrait installation)			Landscape (Not support to the portrait installation)	
	Tilting Angle <sup>2</sup>	0-20 degrees forward with landscape setting			0-20 degrees forward with landscape setting	
	Operating Environment	Temperature: 32 °F to 104 °F (0 °C to 40 °C) for up to 4593 ft (1400 m) altitude/ 32 °F to 95 °F (0 °C to 35 °C) for between 4593 ft to 9186 ft (1400 m to 2800 m) altitude Humidity: 20 % to 80 % (No Condensation), Altitude: lower than 9186 ft (2800 m)			Temperature: 32 °F to 104 °F (0 °C to 40 °C) for up to 4593 ft (1400 m) altitude/ 32 °F to 95 °F (0 °C to 35 °C) for between 4593 ft to 9186 ft (1400 m to 2800 m) altitude Humidity: 20 % to 80 % (No Condensation), Altitude: lower than 9186 ft (2800 m)	
	Storage Environment	Temperature: -4 °F to 140 °F (-20 °C to 60 °C), Humidity: 20 % to 80 % (No Condensation)			Temperature: -4 °F to 140 °F (-20 °C to 60 °C), Humidity: 20 % to 80 % (No Condensation)	
	Operating Time <sup>3</sup>	24 h/day			16 h/day	
	Early Warning Software <sup>4</sup>	EW-SWA100/105 Series	EW-SWA100/105 Series		EW-SWA100/105 Series	EW-SWA100/105 Series

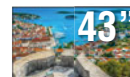
1: Excluding remote control receiver.

2: Please contact your sales representative with regard to the tilt angle before installation.

3: In case of long time, the moving image is recommended to be displayed. If you display a still picture for an extended period, the image retention might remain on the screen. However, image retention can gradually disappear by displaying a moving images.

4: Multi Monitoring & Control Software Ver.2.1 or later is required. Suffix of the part number may differ depending on the license type.

# CQE1 Series



Model no.	TH-55CQE1W	TH-49CQE1W	TH-43CQE1W
Screen Size (Diagonal)/Aspect Ratio	55-inch class (1387.8 mm)/16:9	49-inch class (1232.0 mm)/16:9	43-inch class (1079.8 mm)/16:9
Effective Display Area (W x H)	47.62" x 26.78" (1209.6 x 680.4 mm)	42.47" x 23.77" (1073.8 x 604.0 mm)	37.05" x 20.84" (941.1 x 529.4 mm)
Resolution (H x V)	3840 x 2160	3840 x 2160	3840 x 2160
Brightness (Typ)	400 cd/m <sup>2</sup>	400 cd/m <sup>2</sup>	400 cd/m <sup>2</sup>
Contrast Ratio	1300:1	1200:1	1200:1
Dynamic Contrast Ratio	50000:1	50000:1	50000:1
Response Time	6.0 ms (G to G)	8.0 ms (G to G)	8.0 ms (G to G)
Viewing Angle (Horizontal/Vertical)	178°/178° (CR>10)	178°/178° (CR>10)	178°/178° (CR>10)
Panel Surface Treatment	Anti-Glare Low Reflection (Haze 3%)	Anti-Glare (Haze 1 %)	Anti-Glare (Haze 1 %)
HDMI In	HDMI TYPE A Connector x 4 (HDCP 2.2)		HDMI TYPE A Connector x 4 (HDCP 2.2)
USB	USB Connector (TYPE-A) x 2, (Type-C) x 1, Internal (Type-A) x 1		USB Connector (TYPE-A) x 2, (Type-C) x 1, Internal (Type-A) x 1
PC In	Mini D-sub 15-pin x 1 (Female)		Mini D-sub 15-pin x 1 (Female)
Audio In (L/R)	Pin Jack (L/R) x 1		Pin Jack (L/R) x 1
Audio Out	Stereo Mini Jack (M3) x 1, SPDIF x 1		Stereo Mini Jack (M3) x 1, SPDIF x 1
Serial In	D-sub 9-pin x 1 (Female), RS-232C Compatible		D-sub 9-pin x 1 (Female), RS-232C Compatible
LAN	RJ45 x 1		RJ45 x 1
IR In	Stereo Mini Jack (M3) x 1		Stereo Mini Jack (M3) x 1
Wi-Fi	Built-in, IEEE 802.11. a/b/g/n/ Dual Wi-Fi CERTIFIED		Built-in, IEEE 802.11. a/b/g/n/ Dual Wi-Fi CERTIFIED
Power Requirements	110-127 V AC, 50 Hz/60 Hz	110-127 V AC, 50 Hz/60 Hz	110-127 V AC, 50 Hz/60 Hz
Power Consumption	135 W	115 W	111 W
Power Off Condition	0 W	0 W	0 W
Stand-by Condition	Approx. 0.5 W	Approx. 0.5 W	Approx. 0.5 W
Dimensions (W x H x D) <sup>1</sup>	48.75" x 28.02" x 3.43" (1239 x 712 x 87 mm)	43.3" x 24.98" x 3.35" (1102 x 635 x 85 mm)	38.01" x 21.94" x 3.39" (966 x 558 x 86 mm)
Carton Size (W x H x D)	53.90" x 34.41" x 6.50" (1369 x 874 x 165 mm)	47.84" x 30.52" x 6.50" (1215 x 775 x 165 mm)	41.34" x 28.27" x 7.01" (1050 x 718 x 178 mm)
Bezel Width	0.48" (12.3 mm) (T/R/L), 0.59" (15.1 mm) (B)	0.43" (11 mm) (T/R/L), 0.57" (14.4 mm) (B)	0.38" (9.6 mm) (T/R/L), 0.52" (13.2 mm) (B)
Weight	Approx. 35.8 lbs. (16.2 kg)	Approx. 27.8 lbs. (12.6 kg)	Approx. 21.9 lbs. (9.9 kg)
Gross Weight	Approx. 48.5 lbs. (22.0 kg)	Approx. 37.5 lbs. (17 kg)	Approx. 30.9 lbs. (14.0 kg)
Pitch for Wall-Hanging	VESA Compliant 15.8" x 7.9" (400 x 200 mm)	VESA Compliant 7.9" x 7.9" (200 x 200 mm)	VESA Compliant 7.9" x 7.9" (200 x 200 mm)
Built-in Speaker	16 W [8 W + 8 W]	16 W [8 W + 8 W]	16 W [8 W + 8 W]
Orientation	Landscape (Not support to the portrait installation)		Landscape (Not support to the portrait installation)
Tilting Angle <sup>2</sup>	0-20 degrees forward with landscape setting		0-20 degrees forward with landscape setting
Operating Environment	Temperature: 32 °F to 104 °F (0 °C to 40 °C) for up to 4593 ft (1400 m) altitude/ 32 °F to 95 °F (0 °C to 35 °C) for between 4593 ft to 9186 ft (1400 m to 2800 m) altitude Humidity: 20 % to 80 % (No Condensation), Altitude: lower than 9186 ft (2800 m)		Temperature: 32 °F to 104 °F (0 °C to 40 °C) for up to 4593 ft (1400 m) altitude/ 32 °F to 95 °F (0 °C to 35 °C) for between 4593 ft to 9186 ft (1400 m to 2800 m) altitude Humidity: 20 % to 80 % (No Condensation), Altitude: lower than 9186 ft (2800 m)
Storage Environment	Temperature: -4 °F to 140 °F (-20 °C to 60 °C), Humidity: 20 % to 80 % (No Condensation)		Temperature: -4 °F to 140 °F (-20 °C to 60 °C), Humidity: 20 % to 80 % (No Condensation)
Operating Time <sup>3</sup>	16 h/day		16 h/day
Early Warning Software <sup>4</sup>	EW-SWA100/105 Series	EW-SWA100/105 Series	EW-SWA100/105 Series

1: Excluding remote control receiver.

2: Please contact your sales representative with regard to the tilt angle before installation.

3: In case of long time, the moving image is recommended to be displayed. If you display a still picture for an extended period, the image retention might remain on the screen. However, image retention can gradually disappear by displaying a moving images.

4: Multi Monitoring & Control Software Ver.2.1 or later is required. Suffix of the part number may differ depending on the license type.

## Standard equipped with an abundance of terminals. Optimal as a conference room

The CQE1 Series is equipped with four HDMI input terminals. USB type-A and Type-C. It is also equipped with Wi-Fi, and can conduct wireless transmission with a PC. Display Internet-based information and smoothly alternate presenters during a meeting.

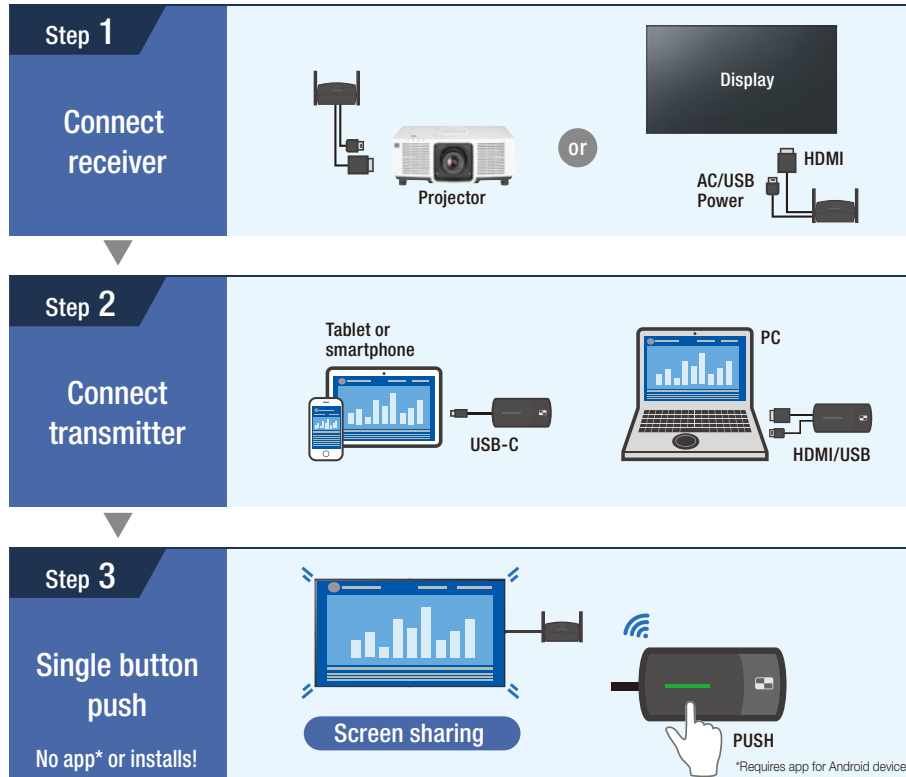


## Preinstalled Web Browser Allows for Easy Signage Updates

The CQE1 series is preinstalled with the Android-based Web browser. So, it can serve as signage without an external device, such as a set-top box or PC, or without a connection cable.



- 1 Easy connections with no app
- 2 Single button push a screen sharing
- 3 Multi-screen sharing up to 4



**Connects to mobile devices**  
Genuine Digital AV adaptor by Apple is required.



**Presents 4 screens in Full HD**  
[supports 4K]



**High-definition video**  
max. resolution:  
1920 x 1080 pixels, 60p

**Low latency image**

**Connects up to 32 transmitters at once**

**Lock mode prevents interrupts**

**HDMI-CEC command compatible**

**Antibacterial surface treatment**

**Supports audio transmission**

## Lineup



	Basic Set		Receiver (Board)	Transmitter (HDMI)		Transmitter (USB Type-C)	
Model	TY-WPS1	TY-WPSC1 <small>NEW</small>	TY-SB01WP	TY-WP2B1	TY-WPB1	TY-WP2BC1	TY-WPBC1
Applicable product	Flat Panel Display / Projector (Panasonic and others)		SQ1H/SQ1/SQE1/BQ1 Series	PC/Tablet/Smartphone			
What's included?	1 Receiver (Box) x1 3 Transmitter (HDMI) x2 5 Transmitter case x1	1 Receiver (Box) x1 4 Transmitter (USB Type-C) x2 5 Transmitter case x1	2 Receiver x1	3 Transmitter (HDMI) x2 5 Case x1	3 Transmitter (HDMI) x1	4 Transmitter (USB Type-C) x2 5 Case x1	4 Transmitter (USB Type-C) x1

## Specifications

Product	Receiver (Box)	Receiver (Board)	Transmitter (HDMI)	Transmitter (USB Type-C)
Max resolution/ Framerate	1920 x 1080/60p (max), 3840 x 2160/30p (max)		1920 x 1080/60p (max)	
Number of simultaneous connections	32		—	
Number of sources simultaneous on screen	4		—	
Data Rate	Wired	10/100/1000 (Mbps)	—	
	Wireless	Max. 867 Mbps	Max. 433 Mbps	
Frequency band	5 GHz band 5,150 MHz - 5,250 MHz 36 40 44 48 Channel			
Wireless transmission protocol	IEEE802.11a/n/ac		IEEE802.11ac	
Security	WPA/WPA2		WPA2	
Reach (Max distance between transmitter and receiver)	Max. 30 m (When the line of sight/wave conditions are good)			
Terminals	HDMI/USB-A (female) /RJ45(LAN)		HDMI/USB-A (female)/ USB-A (male)	USB-C (female)/ USB-A (male)
Power	DC 5 V/2 A	12 V/0.9 A (Display Power supply)	DC 5 V/0.9 A	
Power consumption	10 W	10 W	4.5 W	
Operating Environment	Temperature	32 °F to 95 °F (0 °C to 35 °C)	32 °F to 131 °F (0 °C to 55 °C)	32 °F to 95 °F (0 °C to 35 °C)
	Humidity	20 % to 80 % (No condensation)	20 % to 80 % (No condensation)	20 % to 80 % (No condensation)
Dimensions (W x H x D)	4.71" x 1.03" x 3.19"/ 120 x 26 x 81 mm (Excluding antenna)	3.22" x 0.99" x 4.78"/ 82 x 25 x 122 mm (Excluding antenna)	2.00" x 0.80" x 2.86"/ 51 x 21 x 73 mm (Excluding cables)	2.00" x 1.00" x 2.86"/ 51 x 26 x 73 mm (Excluding cables)
Weight	Approx. 0.4 lbs. / 181 g	Approx. 0.3 lbs. / 125 g	Approx. 0.3 lbs. / 110 g	Approx. 0.3 lbs. / 110 g

\*Case: Dimensions (W x H x D: 6.0" x 1.7" x 7.8" (151.3 x 41.6 x 198.0 mm)),  
Weight: Approx. 0.7 lbs./315 g

For more information, please visit the following website.  
<https://panasonic.net/cns/prodisplays/pressit>



Elaborate 4K Picture Quality down to the Tiniest Details

SQ1H

SQ1

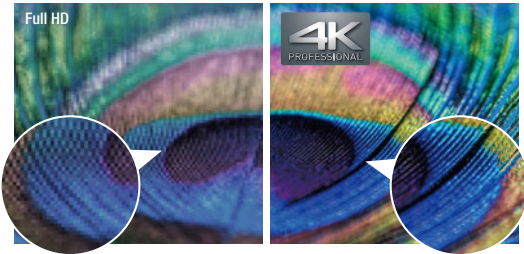
SQE1

EQ1

CQ2

CQE1

With approximately 8,290,000 pixels, about four times the pixels of a Full-HD display, images are highly detailed. This dynamic, large-screen display achieves true-to-life finely nuanced images. With an optimal viewing distance of 1.5 times the screen height, the 4K display renders the information you want to transmit with excellent clarity.



\* Images are simulated.

Supports HDR and BT.2020 Emulation

SQ1H

SQ1

The SQ1H and SQ1 Series supports HDR (High Dynamic Range) (PQ and HLG). Image reproduction is stunning, from deepest black to sparkling bright highlights. Additionally, they have emulation mode for BT.2020. This enables an emulation display to support the wide color gamut of the ITU-R BT.2020 standard.

Supports the Next-Generation Intel® SDM Specification Slot Standard

SQ1H

SQ1

SQE1

The SQ1H/SQ1/SQE1 Series is equipped with the new Intel® SDM specification slot standard that supports 4K signals. Combined with the interface board, you can easily use a built-in PC and add various interfaces.



High Color Reproduction (6-Axis & 12-Axis Color Correction)

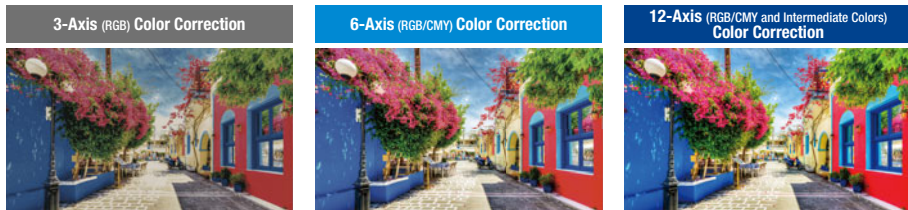
SQ1H

SQ1

SF2H

EQ1

The color space on LCD displays tends to narrow when the luminance level drops, and it's often accompanied by color phase shifts. Six Axis Coordinate Correction applies image processing to balance the six axes of the three primary colors (RGB) and their complementary colors (CMY). Further, in the SQ1 Series, the color temperature, shade, and brightness parameters of individual images can be adjusted for red, green, and blue, and their complementary colors, cyan, magenta, and yellow. This keeps the intermediate shades of extremely fine colors vibrant and lifelike.



\* Images are simulated.

Dynamic Signage is Possible with the Portrait Zoom

SQ1H

SQ1

EQ1

Split the content from image sources, and enlarge the display in a portrait orientation. There is no need to use a special device, such as a processor, while creating content from various images. Placing three 65-inch models vertically creates a display equivalent to 112 inches. This enables highly visible store signage.



\* The picture quality may be degraded when the image is enlarged.

\*These functions on the 98/86SQ1 models are compatible with the Software Main Version 3.0/000 or later. (For the EQ1 Series: Software Main Version 2.0/00 or later is required.) Please contact your sales representative with regard to details.

Easy Display of Images Optimized for the Display Content

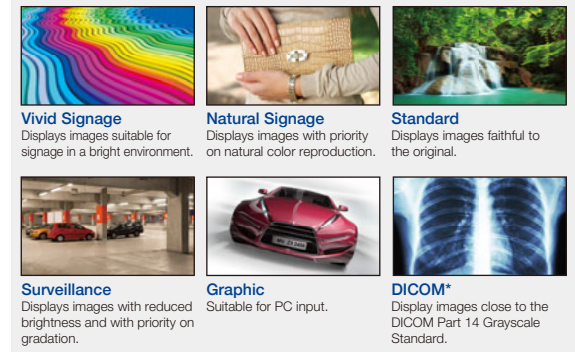
SQ1H

SQ1

SF2H

EQ1

Conventional display panels are preset with display modes such as Standard and Dynamic. The SQ1H, SQ1, SF2H, and EQ1 Series comes with an extensive display menu to let you select the most suitable mode for the content to be displayed and the viewing environment. You can select the best mode for the video source and the place of display.



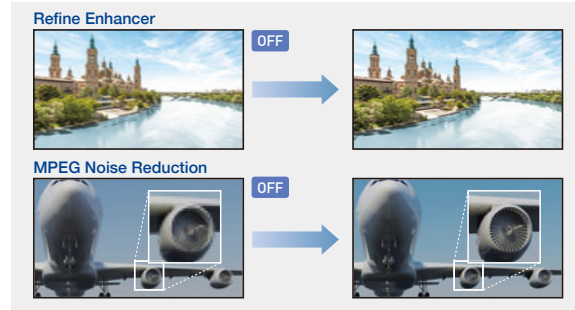
\*Although the term "DICOM" is used, this product is not medical equipment. Do not use displayed images for medical purposes such as examination or diagnosis.

•Refine Enhancer

Corrects blurry image contours resulting from resizing, etc., to improve the image resolution.

•MPEG Noise Reduction

Noise reduction suppresses the block noise and mosquito noise that are characteristic of digital video signals. This faithfully reproduces the inherent beauty of the image.

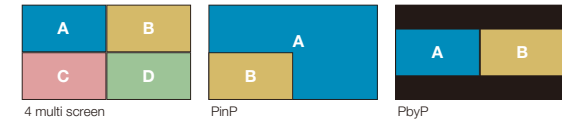


Multi Input Screen Capability with No Processor Required

SQ1H

SQ1

Multi Input Screen Capability with No Processor Required The SQ1H and SQ1 Series can simultaneously display multiple images on a single screen. In addition to 4 multi screens, the SQ1H and SQ1 Series can display 2 screens, such as PinP and PbyP. This is ideal for checking details in various applications, such as videoconferences, digital signage, and surveillance monitoring.



Brilliant, High-Quality over 1200 cd/m<sup>2</sup> Images for Bright Lobbies

SQ1H

The SQ1H Series provides highly visible signage even in open spaces with natural lighting. A panel with a wide viewing angle is used, and it has an eye-catching effect even when people are moving.

\*TH-86SQ1H is 1200 cd/m<sup>2</sup>, TH-75SQ1H is 1500 cd/m<sup>2</sup>.





## Portrait Installation Capability

\* Expect the CQ2, CQE1 Series.

When the Large size display is installed vertically, it can display a person in almost life-size dimensions. It is ideal for digital signage use because it faithfully reproduces the textures and colors of a model's clothing and accessories. It helps to maintain a high-quality brand image. Vertical installation also has no effect on the lifetime of the panel.



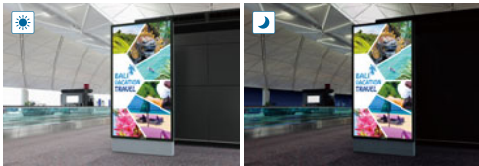
## Efficiency and Reliability for Continuous 24-hour Operation

SQ1H SQ1 SQE1 SF2H EQ1 CQE1

\*S5/7SE1 only \*98CQE1 only

The use of highly durable panel materials and quality electronic components ensures dependable 24-hour operation seven days a week.

\* Display of moving images is recommended when panels are in use for long periods to prevent image retention. Note that image burn-in can be gradually rectified with the periodical display of moving images.

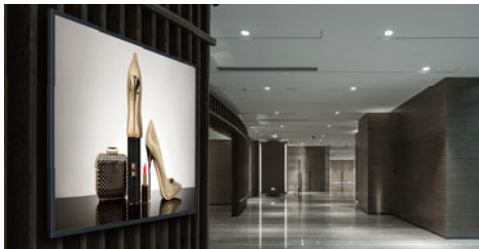


## A Stylish and slim design Accentuates the Image

SQ1H SQ1 EQ1

The stylish and slim design complies with the ADA standard (a depth of less than 4-inch (approx.100 mm) with brackets) in all important aspects. The narrow bezel displays higher-impact images, further enhancing the 4K picture quality. The slim profile isn't the least oppressive even when installed in a hanging configuration.

\* The availability of the TY-WK98PV1 varies depending on the country.



\* ADA stands for the "Americans with Disabilities Act," a United States law made to protect people with disabilities from discrimination.

## Fanless Design

SQ1 SQE1 SF2H EQ1 CQ2 CQE1

Standard models robust fanless design prevents problems caused by the intake of dusty air. The displays can be safely installed and operated in high-traffic environments.

## Connection to an External Device is Convenient for Video Conferences

EQ1

Cisco Systems can be connected. The power supply for the display can be turned on and off by the Cisco Systems Device Controller. Or when connected to a Cisco Systems device, the video mode, video conference mode,\* etc., can be automatically set.

\* Video conference mode ... This enables conferences with minimal lag between video and audio.

\* This function is compatible with the Software Main Version 2.2000 or later. Please contact your sales representative with regard to details.

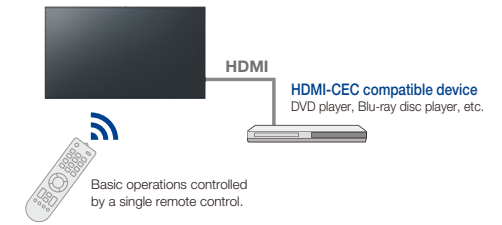


## HDMI CEC Device Linking Supported

SQ1H SQ1 SQE1 SF2H CQ2 CQE1 EQ1

HDMI-CEC compatible devices can be connected to the display by an HDMI cable, enabling the basic operations (such as power ON/OFF) of the compatible devices to be controlled by the display's remote control. Power ON/OFF of the display can also be switched using only the remote control (or main unit buttons) of the HDMI-CEC compatible devices.

\* The control of all devices cannot be guaranteed.

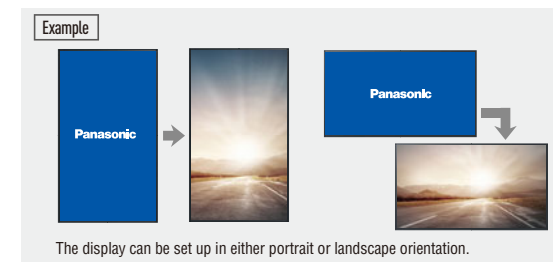


## Customizable Original Screen

SQ1H SQ1 SQE1 SF2H EQ1 CQE1

An original image created by your company or other desired picture can be displayed when the unit is turned on and when there is no input signal. The image data for the original screen can be transferred and stored in the display unit via a USB memory. This function allows a company logo mark, brand image, etc., to be displayed when there is no input signal.

• Certain limitations apply to the format for original screen.  
\* The SQ1/EQ1 Series is compatible with 3480 x 2160 and 1920 x 1080 resolution.



## 4K Daisy Chain can be Constructed with Even Higher Resolution Multi-Screens

SQ1H SQ1

The SQ1 Series is equipped with DisplayPort input/output terminals. Construct a multi-screen that can output 4K images by installing multiple units and connecting them in a daisy chain.

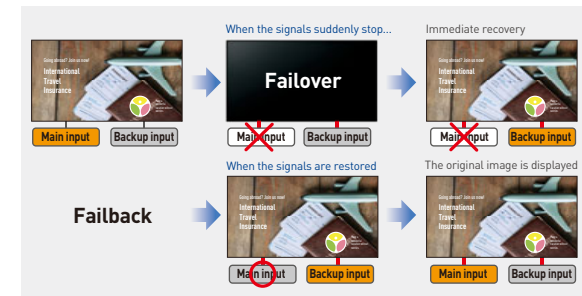


## Failover and Failback Safeguards for Mission Critical Situations

SQ1H SQ1 SF2H EQ1

These models are equipped with a variety of signal input terminals. If the main video and audio signals are interrupted, the system immediately switches to alternative signals. This makes it ideal for mission critical control rooms and surveillance centers. If the main signals are restored, the original image is displayed.

\* The usable combinations of main and backup signals are limited.  
For details, see the product website.



### Simple Signage Operation with No STB

The display can automatically start showing pictures when a USB memory containing data is inserted. The display unit can be used as digital signage without a set-top box or PC. And the content can be displayed smoothly without including the black screen display. What's more, the order of content playback and playback time can be programmed. Content can also be rewritten and multiple displays can be operated via LAN.\*

- If it is difficult to insert a USB memory due to installation conditions, use a commercially available extension cable.
- Some files cannot be played back even if they are in the supported format. Regarding restrictions, see the operation manual.
- \* Multi Monitoring & Control Software (free) is required.

SQ1H

SQ1

SF2H

EQ1

■ Applicable format

Still Image	JPG, JPEG, JPE, BMP*
Motion Image	AVI, MKV, ASF, WMV, TS, MTS, MP4, 3GP, MOV, FLV, F4V

\* BMP is supported only by the EQ1 Series.  
\* The SQ1H/SQ1/EQ1 Series is compatible with the 4K signal.

Playback by one unit

Simultaneous playback by multiple units

One of up to four display units becomes the parent unit, and the other units display images in sync with the parent unit. This enables the display of images in perfect sync when the panels are arranged next to each other.

### Play USB Content Instantly

Playing Full HD video, still images, and digital documents from USB storage devices couldn't be easier. Just insert a thumb drive into the USB port and start presenting without needing to connect a PC. The Memory Viewer app enables image\* (JPEG, BMP) and video\* (WMV, AVI, MOV, MP4, MPG) selection from handy thumbnail previews.

- \* In some cases, files may not be viewable even if they are encoded in a supported format.

■ Applicable format	
Still Image	JPG, JPEG, JPE, BMP
Motion Image	AVI, MKV, ASF, WMV, GS, MGS, MP4, 3GP, MOV, FLV, F4V

\* The SQE1 and CQE1 Series are not compatible with WMV, MTS and F4V.

SQ1H

SQ1

SQE1

SF2H

EQ1

CQ2

CQE1

### Cloning Function Speeds Up Multiple Display Setup

When installing multiple displays, the Cloning function lets you use a USB memory (or LAN network) to copy the settings of a parent display to other units, thus greatly shortening the setup time.

- [Date & Time], [Network Settings], [LAN Settings] and Display ID cannot be copied.
- The Cloning function works only for displays with the same screen size.

SQ1H

SQ1

SQE1

SF2H

EQ1

CQE1

• **Data that can be copied**  
Setting and set values of [Picture], [sound], [Setup], [Position], and [Options] menus.\*  
\*[Options] are not supported by SQ1/EQ1.

### USB Memory Network Settings

Using a USB memory device, the network setting can be made for multiple displays. Individual IP addresses for each unit are automatically set.

SQ1H

SQ1

EQ1

Automatically set individual IP addresses

IP address: 192.168.0.10

IP address: 192.168.0.11

IP address: 192.168.0.12

Note: Setting images are simulated.

### A Conference Room Audio Mode for Easier Listening

This function makes voices easier to listen to in video conferences or when the video is displayed, for improved audio quality. A setting is also possible to improve sound muffling when the display is mounted on a wall. If the automatic sound volume adjustment function is used, information sharing is possible with the sound level at a comfortable level.

- \* This function on the 98/86SQ1 Series is compatible with the Software Main Version 4.0000 or later. (for the EQ1 Series, Soft Main Version 2.000 or later is required.)  
Please contact your sales representative with regard to details.

### Make Your Signage Easy with Panasonic Application

The SQ1H, SQ1, SF2H, and EQ1 Series features a USB Media Player function that allows easy signage playback. Content Management Software is an application software for scheduling digital signage playback on a computer. It also allows power ON/OFF to be set.

For more information about Content Management Software Version 3.3.1, please visit:  
<https://panasonic.net/cns/prodisplays/download/software/>

#### Play Content Automatically with Scheduling Function

Content Management Software for PC Version 3.3.1 (free) enables easy playlist creation with media support including combinations of still and video images. You can set up schedules for playing and closing your media playlist at predetermined dates and times.

Power On

9:00 AM

12:00 PM

7:00 PM

Power Off

Playlist 1

Playlist 2

Playlist 3

Video

Video + Still

Still

#### Convenient Playlist and Schedule Syncing

Playlists and schedules created with Content Management Software can be transferred to displays with USB memory, or via LAN. Synchronized playback on multiple displays is also supported.

Create playlist

Playback via USB memory

Delivered via LAN

Synchronized playback available!

### DIGITAL LINK Function Enables Simple Installation and Low System Costs

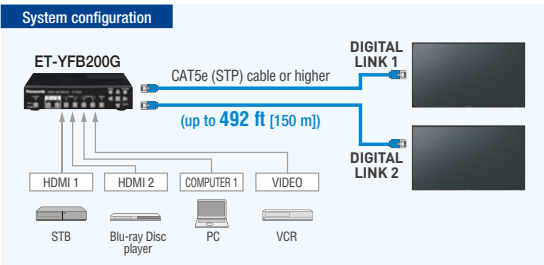
SQ1H

SQ1

SF2H

Using DIGITAL LINK makes it possible to transmit video, audio and control signals over a long distance (up to 492 ft [150 m]) with a single LAN cable\*. Easy cabling also reduces labor during setup. This provides transmission of high-quality images and sounds, as well as remote control.

\* When connected with the [Long reach] mode, the maximum transmission distance is 492 ft (150 m). In this case, the unit can receive the signals of up to 1080/60p. A CAT5e (STP) cable or higher is required. This supports 4K video over distances of up to 164 ft (50 m) with a single LAN cable.



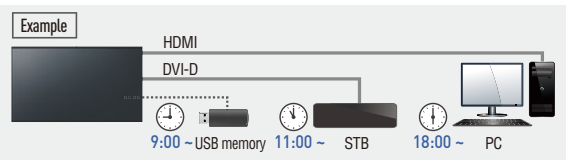
### Timer-Programmable Switching of Device Connection

SQ1

SF2H

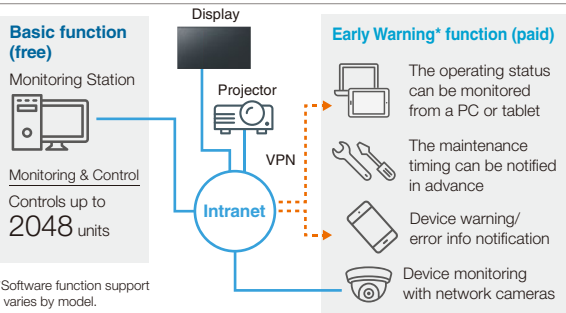
EQ1

The timer function of the display unit can be used to change connected signal source devices at a desired time. This allows an easy change of displayed content according to the application or the progress of an event.



### Multi Monitoring & Control Software

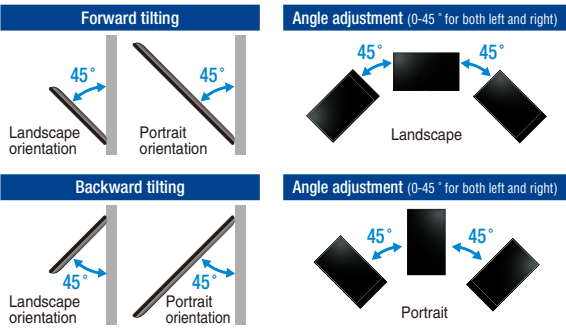
Compatible with Multi Monitoring & Control Software for addition of new functions, such as automatic searching for map displays and registered devices. Displays and peripheral equipment on the intranet can be controlled and their status can be monitored. Also error notification and error indication can be detected by an indication monitoring function (for a fee) for improved maintenance.



### Choose the Installation to Match Your Application

Panasonic displays are designed for use in either portrait or horizontal orientation with no effect on panel color and lifespan, further reducing TCO. A tilt installation up to 45 degrees forward or backward is also possible. The angle can be adjusted for easy viewing when installed in a high location.

\* The installable angle varies depending on the model. For details, see the specifications page for each model. For more information on the specifications page, please visit the download page. ([https://panasonic.net/cns/prodisplays/download/spec\\_manual/](https://panasonic.net/cns/prodisplays/download/spec_manual/))



### Smooth Switching of Presenters

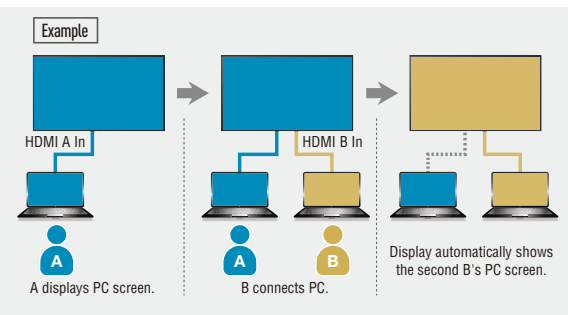
SQ1

SF2H

EQ1

These displays automatically switches source signals when the input signal for the current content stops or when an input signal other than the signal of the current content is received. When presenters change during a meeting, the displayed image can be switched easily by simply changing the cable connection, thus eliminating the need to operate the remote control.

\* The 2 switching inputs must be set in advance.  
\* This function may not operate correctly depending on the image playback device.  
\* Digital-digital switching is supported by the SQ/EQ Series. Analog-digital switching is supported by the SF2H Series.



### Built-in Speakers for the Playback of Content with Sound

All models are supported

The display unit has built-in speakers so that it can playback content with sound without the connection of external speakers. This allows maximum use of a limited space for the installation of a large-screen display



### Supports LAN Content Connection

SQ1H

SQ1

SQE1

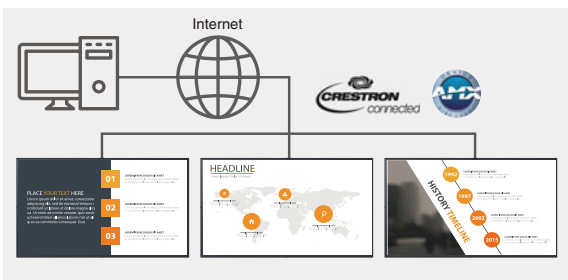
SF2H

EQ1

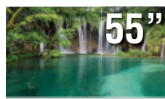
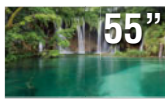
CQE1

\*Creston connected supported only

The display can be controlled by LAN or RS-232C. You can configure the display into your existing control system, and can control several devices simultaneously. It also supports AMX or Crestron Connected™ LAN control.



# VF/LFV Series



	Model no.	TH-55VF2HW	TH-55VF2W	TH-55LFV9U
DISPLAY PANEL	Screen size (Diagonal)/Aspect Ratio	55-inch class (1387 mm)/16:9	55-inch class (1387 mm)/16:9	55-inch class (1387.8 mm)/16:9
	Effective Display Area (W x H)	47.6" x 26.7" (1209.6 x 680.3 mm)	47.6" x 26.7" (1209.6 x 680.3 mm)	47.62" x 26.78" (1209.6 x 680.4 mm)
	Resolution (H x V)	1920 x 1080	1920 x 1080	1920 x 1080
	Brightness (Typ.)	700 cd/m <sup>2</sup>	500 cd/m <sup>2</sup>	500 cd/m <sup>2</sup>
	Contrast Ratio	1100:1	1100:1	1200:1
	Dynamic Contrast Ratio	500000:1	500000:1	500000:1
	Response Time	9.0 ms (G to G)	9.0 ms (G to G)	9.0 ms (G to G)
	Viewing Angle (Horizontal/Vertical)	178° / 178° (CR≥10)	178° / 178° (CR≥10)	178° / 178° (CR≥10)
TERMINAL	Panel Surface Treatment	Advanced Anti-Glare (Haze 28 %)	Advanced Anti-Glare (Haze 28 %)	Advanced Anti-Glare (Haze 28 %)
	HDMI In	HDMI Type A Connector x 1		HDMI Type A Connector x 2
	VIDEO In	—	—	BNC x 1 (Shared with Component In)
	Audio In (L/R)	—	—	Stereo Mini Jack x 1 (Shared with Component In)
	Component/RGB In	—	—	BNC x 1 set (Shared with VIDEO In)
	Audio In (L/R)	—	—	Stereo Mini Jack x 1 (Shared with Video In)
	DisplayPort In	DisplayPort x 1 (DP1.1a Dual Mode Only)		DisplayPort x 1 (DP1.1a / DP1.2)
	DisplayPort Out	—	—	DisplayPort x 1
	DVI-D In	DVI-D 24-pin x 2 (Female)		DVI-D 24-pin x 1 (Female)
	Audio In (L/R)	Stereo Mini Jack (M3) x 1 (Shared with PC In)		Pin Jack (L+R) x 1 set (Shared with PC In)
	DVI-D Out	—	—	—
	PC In	Mini D-Sub 15-pin x 1 (Female)		Mini D-Sub 15-pin x 1 (Female)
	Audio In (L/R)	Stereo Mini Jack (M3) x 1 (Shared with DVI-D In)		Pin Jack (L+R) x 1 set (Shared with DVI-D In)
	DVI-I Out	—	—	DVI-I 29-pin x 1
	USB	USB Connector (TYPE-A) x 1, DC 5 V/500 mA (USB2.0)		USB Connector (TYPE-A) x 1, DC 5V/500mA (USB2.0)
	Serial In/Out	D-Sub 9-pin x 1 (Male) / x 1 (Female), RS-232C Compatible D-Sub 9-pin x 1 (Male) / x 1, RS-232C Compatible		2.5 mm Phone Jack x 1 / x 1
	DIGITAL LINK In/DIGITAL LINK Out	RJ45 x 1 / x 1, 100 BASE-TX, Compatible with long reach mode and PLink™ (Shared with LAN)		—
	LAN	RJ45 x 1 / x 1, (100 BASE-TX, Compatible with PLink™) (Shared with DIGITAL LINK)		RJ45 x 1, 10 BASE-T / 100 BASE-TX, Compatible with PLink™
	IR In/Out	Stereo Mini Jack (M3) x 1 / x 1		Stereo Mini Jack (M3) x 1 / x 1
	Audio 1 In	Stereo Mini Jack (M3) x 1		—
	Audio 2 In	L/R Pin Jack x 1		—
	Audio Out	Stereo Mini Jack (M3) x 1, 0.5 V [rms] Variable (-∞ ~ 0 dB) (1 kHz 0 dB Input, 10 kΩ Load)		Stereo Mini Jack (M3) x 1 0.5 V [rms] Variable (-∞ ~ 0 dB) (1 kHz 0 dB Input, 10 kΩ Load)
GENERAL	Power Requirements	110-127 V AC, 50 Hz/60 Hz	110-127 V AC, 50 Hz/60 Hz	110-127 V AC, 50 Hz/60 Hz
	Power Consumption	300 W	300 W	185 W
	Stand-by Condition	Approx. 0.5 W	Approx. 0.5 W	Approx. 0.5 W
	Dimensions (W x H x D)	47.66" x 26.82" x 3.83" (1210.6 x 681.3 x 97.3 mm)	47.66" x 26.82" x 3.83" (1210.6 x 681.3 x 97.3 mm)	47.78" x 26.94" x 3.86" (1213.4 x 684.2 x 98.0 mm)
	Carton Size (W x H x D)	55.0" x 33.4" x 11.1" (1395 x 848 x 280 mm)	55.0" x 33.4" x 11.1" (1395 x 848 x 280 mm)	55.0" x 33.4" x 11.1" (1395 x 848 x 280 mm)
	Bezel Width	T/B/L/R: 0.018" (0.44 mm)	T/B/L/R: 0.018" (0.44 mm)	L/T: 0.089" (2.25mm), R/B: 0.049" (1.25mm)
	Bezel to Bezel <sup>1</sup>	0.034" (0.88 mm) (Multi Screen)	0.034" (0.88 mm) (Multi Screen)	0.14" (3.5 mm) (Multi Screen)
	Weight	Approx. 50.7 lbs. (23.0 kg)	Approx. 50.7 lbs. (23.0 kg)	59.5 lbs. (27.0 kg)
	Gross Weight	Approx. 75.0 lbs. (34.0 kg)	Approx. 75.0 lbs. (34.0 kg)	81.6 lbs. (37.0 kg)
	Pitch for Wall-Hanging	VESA compliant 15.8" x 15.8" (400 x 400 mm)		VESA compliant 15.8" x 15.8" (400 x 400 mm)
	External Speaker	—	—	8 Ω, 20 W [10W + 10 W] (10% THD)
	Orientation <sup>2</sup>	Landscape/Portrait		Landscape/Portrait
	Tilting Angle <sup>2</sup>	Vertical Only		Vertical Only
OPTIONS	Operating Environment	Temperature: 32 °F to 104 °F (0 °C to 40 °C) <sup>3</sup> /32 °F to 95 °F (0 °C to 35 °C) <sup>4</sup> / Humidity: 20% to 80% (No Condensation)		Temperature: 32 °F to 104 °F (0 °C to 40 °C) <sup>3</sup> /32 °F to 95 °F (0 °C to 35 °C) <sup>4</sup> / Humidity: 20% to 80% (No Condensation)
	Storage Environment	Temperature: -4 °F to 140 °F (-20 °C to 60 °C) / Humidity: 10% to 90 % (Non condensation)		Temperature: -4 °F to 140 °F (-20 °C to 60 °C)/Humidity: 10% to 90 % (Non condensation)
	Operating Time <sup>5</sup>	24 h/day		24 h/day
	Cover Frame Kit	—	—	—
	Installation Mount	TY-VK55LV2	TY-VK55LV2	TY-VK55LV2
OPTIONS	Early Warning Software <sup>6</sup>	ET-SWA100/105 Series	ET-SWA100/105 Series	ET-SWA100/105 Series
	Auto Display Adjustment Upgrade Kit <sup>7</sup>	TY-VUK10	TY-VUK10	TU-VUK10
	Multi Window Processor	—	—	—

1: Bezel-to-Bezel distance means the combined top and bottom (or left and right) bezel width of adjacent displays in multi-screen. The gap between displays is not included. Note a gap of 0.02" (0.5 mm) or more is required when installing multiple displays.

2: Please contact your sales representative with regard to the tilt angle before installation.

3: For up to 4593 ft (1400 m) altitude.

4: For between 4593 ft (1400m) to 9186 ft (2800 m) altitude.

5: In case of long time, the moving image is recommended to be displayed. If you display a still picture for an extended period, the image retention might remain on the screen. However, image retention can gradually disappear by displaying a moving images.

6: Multi Monitoring & Control Software Ver. 2.1 or later is required. Suffix of the part number may differ depending on the license type.

7: Download the latest Video Wall Manager from Global Website in advance. (<https://panasonic.net/cns/prodisplays/download/software/vwm/>)

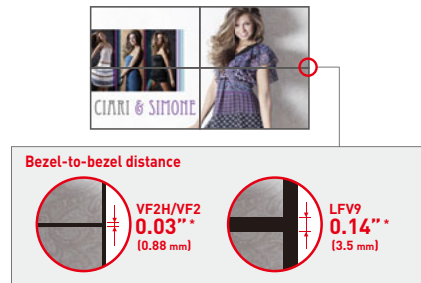


## Narrow Bezel for Seamless Video Walls

VF2H/VF2 LfV9

Narrow frames on Panasonic's LCD Video Wall Series reduce bezel-to-bezel distance to a near-invisible 0.03". Even when viewed close-up, screen borders are almost indiscernible, resulting in truly spectacular large-format images.

\* TH-55VF2H/55VF2 features 0.03" (0.88 mm), and TH-55LFV9 0.14" (3.5 mm), bezel-to-bezel distance. Bezel-to-bezel distance refers to the combined top and bottom (or left and right) bezel-width of adjacent displays in video-wall configuration. The gap between displays is not included. Note that a gap of 0.02" or more is required when installing multiple displays.



## Improved Multi-Screen Video Visibility

VF2H/VF2

When high-speed video is played on multiple screens in a video wall, some image misalignment can occur between vertically adjacent panels. VF2H, and VF2 Series feature a Reverse Scan Function that alternates the scanning direction of vertically adjacent displays to improve image alignment. Frame Control Function, meanwhile, adjusts the number of video frames displayed to reproduce images with natural fluidity.

### Reverse Scan Function

Reverses direction of image scanning to smoothly play enlarged video on multiple screens

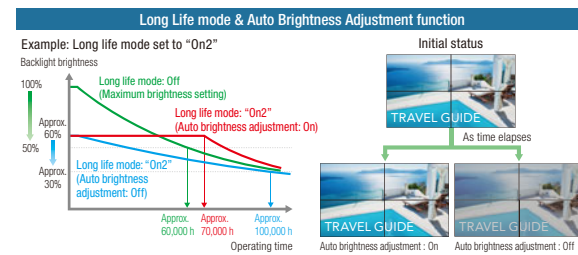


Note: Images are simulated.

## Delivers Stable Brightness for Up to 8 Years\*

VF2H/VF2

The VF2H, and VF2 Series incorporates Long Life mode and a new Auto Brightness Adjustment function. In Long Life mode, backlight brightness is optimized to extend product life. Auto Brightness Adjustment function corrects light output automatically according to the rate of backlight deterioration to maintain constant brightness for longer.



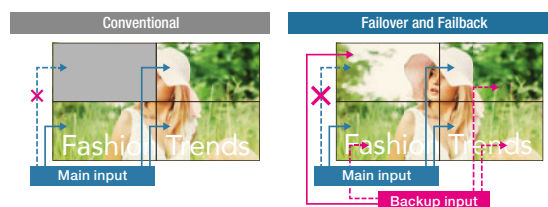
\* Figure is approximate when operating continuously for 24 hours x 365 days.

Note: Assuming operating conditions of 25 °C (± 2 °C). Environmental conditions and conditions of usage may affect brightness longevity and operating period. "On2" delivers approximately 60 % maximum specified backlight brightness. Auto brightness adjustment cannot be turned on if panel illumination period has exceeded 1,000 hours. Note: Images and graphs are simulated.

## Failover and Failback Safeguards Maintain Image Display

VF2H/VF2 LfV9

Digital signal inputs comprise one or two DVI-D terminals together with HDMI, DisplayPort, DIGITAL LINK\*, and USB terminals. If primary audio-video signals are interrupted, the display immediately switches to an alternative input. This makes the Panasonic LCD Video Wall Series well suited for use in control rooms and in other applications where uninterrupted playback is essential.



If AV signals via the primary input is interrupted, images are no longer displayed.

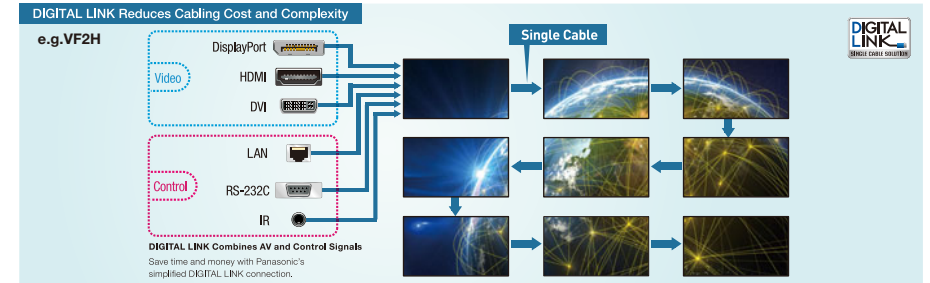
If the primary AV signal is interrupted, the system automatically switches to a backup input so video display is maintained.

Note: Possible combinations of main/backup input signals are limited. For details, please visit the Panasonic website.

## DIGITAL LINK Simplifies Installation at Lower Cost

VF2H/VF2

Based on HDBaseT™ technology, the DIGITAL LINK connection on VF2H, VF2 Series displays supports audio, video, and control signal transmission over long distances, and can also be used to daisy-chain multiple displays via a single cable. This eliminates the need for video splitters and other routing devices. The LFV9 Series, meanwhile, supports daisy chain via DVI with separate video and control (serial or IR) connections. Note: CAT5e or higher STP cable required.



## Installation Frame Simplifies Set-up

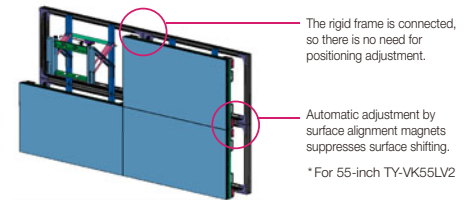
VF2H/VF2 LfV9

The optional Installation Mount makes it much easier to configure a video wall. There's no need for complicated display positioning, and fluctuations between installers are covered. It also saves time and cuts labor costs.

Video wall fluctuations occur when the bezels are not correctly aligned vertically and horizontally and the surfaces are not properly adjusted. Installation is quick and easy using the rigid frame, with easy adjustment using surface alignment magnets. This structure also makes the displays easier to remove when performing maintenance.

\* The following is the maximum number of units when installing a multi-screen using the optional TY-VK55LV2 metal fittings.  
• TH-55VF2H/VF2: 4 columns, 5 rows  
• TH-55LFV9: 9 columns, 11 rows

\*Landscape setting only.



The rigid frame is connected, so there is no need for positioning adjustment.

Automatic adjustment by surface alignment magnets suppresses surface shifting.

\* For 55-inch TY-VK55LV2

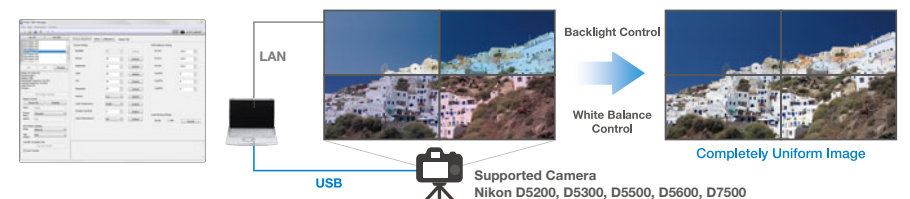
## Video Wall Manager Software and Auto Display Adjustment Upgrade Kit

VF2H/VF2 LfV9

Panasonic's free Video Wall Manager software can be used with LCD Video Wall Series displays. With this software, you can calibrate display color using a color sensor<sup>1</sup> (optional), adjust display settings, and control and manage data via PC. If you upgrade this software with an optional TY-VUK10 Auto Camera Adjustment Kit, you can adjust brightness and color among multiple displays automatically using a compatible camera (Nikon D5200/D5300/D5500/D5600/D7500)<sup>2</sup>.

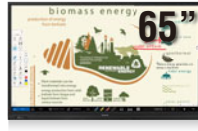
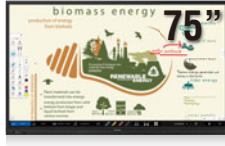
1 Applicable sensors: KONICA MINOLTA (CA-210, CA-310, CA-410 [Probe CA-VP427, CA-P410, CA-P427, CA-MP410 verified as of June 30, 2020]), Datacolor (Spyder4, Spyder5, SpyderX) X-Rite (i1Pro2)  
2 Available only with normal zoom lens: AF-S DX NIKKOR 18-55 mm f/3.5-5.6G VR, AF-S DX NIKKOR 18-140 mm f/3.5-5.6G ED VR, AF-S DX NIKKOR 18-55 mm f/3.5-5.6G VR II, AF-P DX NIKKOR 18-55 mm f/3.5-5.6G VR

### With VF2H and TY-VUK10 connected



Auto Display Adjustment Upgrade Kit: <https://panasonic.net/cns/prodisplays/products/ty-vuk10/>

# BQ1 Series



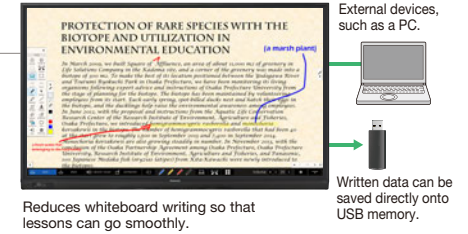
Model no.		TH-75BQ1W	TH-65BQ1W
DISPLAY PANEL	Screen Size (Diagonal)/Aspect Ratio	75-inch class (1892.7 mm)/16:9	65-inch class (1638.9 mm)/16:9
	Effective Display Area (W x H)	64.94" x 36.53" (1649.6 x 927.9 mm)	56.23" x 31.63" (1428.4 x 803.5 mm)
	Resolution (H x V)	3840 x 2160	3840 x 2160
	Brightness <sup>1</sup>	500 cd/m <sup>2</sup>	500 cd/m <sup>2</sup>
	Contrast Ratio	1200:1	1200:1
	Response Time	8.0 ms (G to G)	8.0 ms (G to G)
	Viewing Angle (Horizontal/Vertical)	178°/178° (CR>10)	178°/178° (CR>10)
TOUCH PANEL	Detection Method	Infrared blocking detection method	
	Touch Operation	Up to 20-point multi touch (When using Mac Single touch.)	
	OS	Windows (8.1 / 10), Mac (10.12 / 10.13 / 10.14 / 10.15)	
TERMINAL	HDMI In	HDMI Type A Connector x 3	
	DisplayPort In	Display Port x 1 (Compatible with HDCP 2.2)	
	DIGITAL Out	HDMI Type A Connector x 1	
	DVI-D In	DVI-D 24-pin x 1 (Compatible with HDCP 1.4)	
	Audio In (L/R)	Stereo Mini Jack (M3) x 2 (Shared with PC In)	
	PC In	Mini D-Sub 15-pin x 1 (Female)	
	Audio In (L/R)	Stereo Mini Jack (M3) x 2 (Shared with DVI-D In)	
	Audio Out(L/R)	Stereo Mini Jack (M3) x 1	
	USB <sup>2</sup>	USB Connector (Type-A) Back x 1 DC 5V/ max. 0.9A (USB3.0 supported), Front x 2 DC 5V/ max. 0.5A (USB2.0 supported)	
	USB (Touch)	USB Connector (Type-B) x 1	
	Serial In	D-sub 9-pin x 1, RS-232C Compatible	
	DIGITAL LINK	—	
GENERAL	LAN	RJ45 x 1 compatible with PjLink™ 10BASE-T/100BASE-TX / 1000BASE-T compatible	
	Function Slot	Intel® SDM specification Corresponding size SDM-S / SDM-L, Supply power 3.3 V / 1.1 A, 12 V / 5.5 A	
	Power Requirements	110-240 V AC, 50 Hz/60 Hz	
	Power Consumption	363 W	320 W
	On Mode Average Power Consumption <sup>3</sup>	278 W	230 W
	Power Off Condition	Approx. 0.3 W	
	Stand-by Condition	Approx. 0.5 W	
	Dimensions (W x H x D) with handles	67.6" x 40.7" x 4.2" (1716 x 1032 x 107 mm)	58.9" x 35.8" x 4.2" (1495 x 908 x 105 mm)
	Carton Size (W x H x D)	74.9" x 48.6" x 11.1" (1900 x 1233 x 280 mm)	65.7" x 43.7" x 9.8" (1668 x 1108 x 248 mm)
	Bezel Width (including speaker)	T/L/R: 0.65" (16.3 mm), B: 2.14" (54.3 mm)	
	Weight	124.8 lbs. (56.6 kg)	95.7 lbs. (43.4 kg)
OPTIONS	Gross Weight	154.4 lbs. (70 kg)	119.1 lbs. (54 kg)
	Pitch for Wall-Hanging	VESA Compliant 23.6" x 15.8" (600 x 400 mm)	VESA Compliant 15.8" x 15.8" (400 x 400 mm)
	Protective Glass Thickness	Anti Glare Surface / Scattering prevention film	
	Built-in Speaker	20 W (10 W + 10 W) 10% THD	
	External Speaker	30 W (15 W + 15 W) 10% THD	
	Orientation <sup>4</sup>	Landscape / Portrait	
	Tilting Angle <sup>4</sup>	Landscape: 0 degrees forward, 0-45 degrees backward, Portrait: 0 degrees forward/backward	
	Operating Environment	Temperature: 32 °F to 104 °F (0 °C to 40 °C) [for up to 4593 ft (1400 m) altitude] / 32 °F to 95 °F (0 °C to 35 °C) [for between 4593 ft and 9186 ft (1400 m and 2800 m) altitude], Humidity: 20 % to 80 % (Non-condensation)	
	Storage Environment	Temperature: -4 °F to 140 °F (-20 °C to 60 °C)	
	Operating Time <sup>5</sup>	18 h/day	
	12G-SDI Terminal Board	TY-SB01QS	
	3G-SGI Terminal Board	TY-SB01SS	
	Wireless Presentation System Receiver Board	TY-SB01WP	
	Early Warning Software <sup>6</sup>	ET-SWA100/105 Series	

- 1: The brightness of display panel not shipping product.
- 2: Multiple USB Terminals can not be used at the same time by switching the input signal.
- 3: Based on IEC 62087 Ed.2 measurement method.
- 4: Please contact your sales representative with regard to the tilt angle before installation.
- 5: In case of long time, the moving image is recommended to be displayed. If you display a still picture for an extended period, the image retention might remain on the screen. However, image retention can gradually disappear by displaying a moving images.
- 6: Multi Monitoring & Control Software Ver.2.1 or later required. Suffix of the part number may differ depending on the license type.

## Touch Screen

### Compatible with directly writing onto and saving materials displayed on the screen

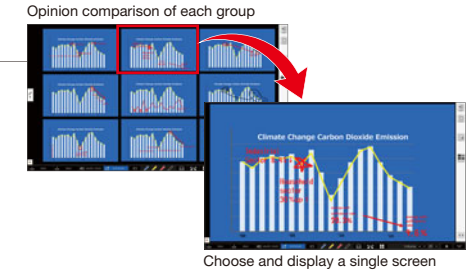
The BQ1 Series features a built-in whiteboard function. Users can directly write onto the images and video displayed from external input devices. The written data can be saved as onto the built-in memory or USB memory.



Reduces whiteboard writing so that lessons can go smoothly.

### Equipped with applications that are optimal for group work

Data from a USB memory or captured data can be selected and up to nine screens can be compared. In addition to exchanging opinions about samples or comparisons during group work, users can freely pick out and display or write onto a screen.

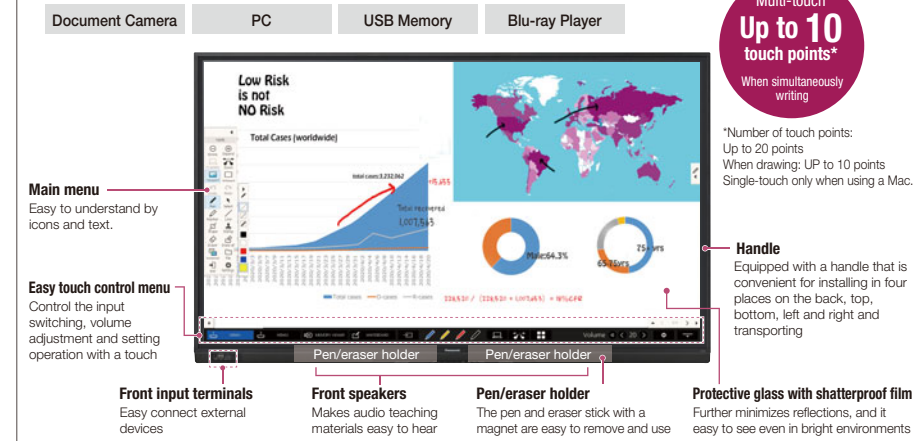


### Equipped with a DIGITAL AV OUT terminal that is convenient for large screen displays

The BQ1 Series is equipped with a DIGITAL AV OUT terminal. By connecting it to a projector using an HDMI cable, the same screens can be displayed. The enlarging or scaling of the writing on the screen are reflected in real-time, making it convenient for classes held in large halls or lecture rooms.



### Compatible with various input devices. Switching between inputs in easy as well.



Multi-touch  
**Up to 10 touch points\***  
When simultaneously writing

\*Number of touch points:  
Up to 20 points  
When drawing: UP to 10 points  
Single-touch only when using a Mac.

**Handle**  
Equipped with a handle that is convenient for installing in four places on the back, top, bottom, left and right and transporting

**Protective glass with shatterproof film**  
Further minimizes reflections, and it easy to see even in bright environments

## Optional Accessories

		High Brightness		Standard														
		TH-86SQ1HW	TH-75SQ1HW	TH-98SQ1W	TH-86SQ1W	TH-75SQ1W	TH-65SQ1WA		TH-55SQ1WA	TH-49SQ1WA	TH-98SQ1W	TH-86SQ1WA	TH-75SQ1W	TH-65SQ1W	TH-55SQ1W	TH-49SQ1W	TH-43SQ1W	TH-70SF2HU
Screen Size (inch)		86	75	98	86	75	65		55	49	98	86	75	65	55	49	43	70
FUNCTION BOARD																		
12G-SDI Terminal Board	TY-SB01QS	Yes	Yes	Yes	Yes	Yes	Yes		Yes	Yes	Yes¹	Yes¹	Yes¹	Yes¹	Yes¹	Yes¹	Yes¹	-
3G-SDI Terminal Board	TY-SB01SS	Yes²	Yes²	Yes²	Yes²	Yes²	Yes²		Yes²	Yes²	-	-	-	-	-	-	-	-
Wireless Presentation System Receiver Board	TY-SB01WP	Yes	Yes	Yes	Yes	Yes	Yes		Yes	Yes	Yes	Yes	Yes	Yes	Yes	Yes	Yes	-
MOUNTING OPTIONS																		
Pedestal	TY-ST75PE9	-	-	-	-	Yes	-		-	-	-	-	-	-	-	-	-	Yes
	TY-ST55PE9	-	-	-	-	-	Yes		Yes	-	-	-	-	-	-	-	-	-
	TY-ST43PE9	-	-	-	-	-	-		-	Yes	-	-	-	-	-	-	-	-
	TY-ST43PE8	-	-	-	-	-	-		-	-	-	-	-	-	-	-	-	-
Wall-hanging Bracket	TY-WK98PV1	Yes	Yes	Yes	Yes	Yes	Yes		-	-	-	-	-	-	-	-	-	-
Installation Mount (Landscape setting only)	TY-VK55LV2	-	-	-	-	-	-		-	-	-	-	-	-	-	-	-	-
Pitch for Wall Hanging	800 x 500 (M8)	-	-	Yes	-	-	-		-	-	-	-	-	-	-	-	-	-
(VESA compliant models)	800 x 400 (M8)	Yes	Yes	-	-	-	-		-	-	Yes	-	-	-	-	-	-	-
	600 x 500 (M8)	-	-	-	-	-	-		-	-	-	-	-	-	-	-	-	-
	600 x 400 (M8)	-	-	-	Yes	-	-		-	-	-	Yes	Yes	-	-	-	-	-
	600 x 400 (M6)	-	-	-	-	Yes	-		-	-	-	-	-	-	-	-	-	-
	400 x 400 (M8)	-	-	-	-	-	-		-	-	-	-	-	-	-	-	-	-
	400 x 400 (M6)	-	-	-	-	-	Yes		Yes	Yes	-	-	-	Yes	-	-	-	Yes
	400 x 200 (M6)	-	-	-	-	-	-		-	-	-	-	-	-	Yes	-	-	-
	200 x 200 (M6)	-	-	-	-	-	-		-	-	-	-	-	-	-	Yes	Yes	-
	100 x 100 (M4)	-	-	-	-	-	-		-	-	-	-	-	-	-	-	-	-
OTHERS																		
DIGITAL LINK Switcher	ET-YFB200G	Yes	Yes	Yes	Yes	Yes	Yes		Yes	Yes	-	-	-	-	-	-	-	Yes
Digital Interface Box	ET-YFB100G	-	-	Yes	Yes	Yes	Yes		Yes	Yes	-	-	-	-	-	-	-	Yes
Multi Window Processor	ET-MWP100³	-	-	Yes	Yes	Yes	Yes		Yes	Yes	-	-	-	-	-	-	-	Yes
SOFTWARE																		
Multi Monitoring & Control Software Compatible		Yes	Yes	Yes	Yes	Yes	Yes		Yes	Yes	Yes	Yes	Yes	Yes	Yes	Yes	Yes	Yes
Early Warning Software Compatible⁴		Yes	Yes	Yes	Yes	Yes	Yes		Yes	Yes	Yes	Yes	Yes	Yes	Yes	Yes	Yes	Yes
Video Wall Manager		Yes	Yes	Yes	Yes	Yes	Yes		Yes	Yes	-	-	-	-	-	-	-	Yes
Auto Display Adjustment Upgrade Kit (TY-VUK10)		-	-	Yes	Yes	Yes	Yes		Yes	Yes	-	-	-	-	-	-	-	Yes
Screen Transfer (free)		Yes⁵	Yes⁵	Yes⁶	Yes⁶	Yes⁶	Yes⁶		Yes⁵	Yes⁵	-	-	-	-	-	-	-	-
Content Management Software		Yes	Yes	Yes	Yes	Yes	Yes		Yes	Yes	-	-	-	--	-	-	-	Yes

The specification has a case to change without notice.

1: The SQE1 Series does not support video or audio settings. 2: This terminal board is supported only when the main software version of the display is 3.5000 or later and the sub software version of the display is 03.50 or later. For update, please contact your Panasonic dealer.

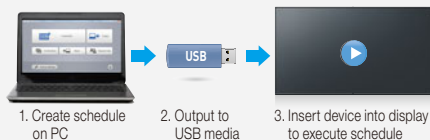
3: The availability varies depending on the country. 4: The part number suffix may differ depending on the license type.

5: The Software Main Version 1.10 or later is required. 6: The Software Main Version 4.40 or later is required.

## Panasonic Software Line-up

### Content Management Software

Content Management Software makes it possible to create scheduling data and media playlist on a PC. The software reduces complexity for temporary installations or where the device is frequently moved from place to place.



Compatible Display: SQ1H Series, SQ1 Series, SF2H Series, EQ1 Series and BQ1 Series

### Whiteboard Software

This simple software is easy to operate. Requiring no PC installation, it can be started and used from external memory. Switching to a convenient, simple menu when using the Remote Pointer is also supported.



Compatible Displays: BQ1 Series

### Auto Display Adjustment Upgrade Kit (TY-VUK10)

Panasonic's free Video Wall Manager software can be used with LCD Video Wall Series displays. With this software, you can calibrate display color using a color sensor, adjust display settings, and control and manage data via PC. If software is upgraded with an optional TY-VUK10 Auto Display Adjustment Upgrade Kit, brightness and color among multiple displays can be automatically calibrated using a compatible camera (Nikon D5200/D5300/D5500/D5600/D7500)\*.

\* Available only with normal zoom lens: AF-S DX NIKKOR 18-55 mm f/3.5-5.6G VR, AF-S DX NIKKOR 18-140 mm f/3.5-5.6G ED VR, AF-S DX NIKKOR 18-55 mm f/3.5-5.6G VR II, AF-P DX NIKKOR 18-55 mm f/3.5-5.6G VR



For more information, please visit the PASS: <https://panasonic.net/cns/prodisplays/pass/>

For information that is not included on this page, please visit the following website: <https://panasonic.net/cns/prodisplays/index.html>

## Optional Accessories

Optional Accessories		Entry													
		TH-86EQ1W	TH-75EQ1W	TH-65EQ1U	TH-55EQ1U	TH-50EQ1U	TH-43EQ1U		TH-86CQ2U	TH-75CQ2U	TH-65CQ2U	TH-55CQ2U	TH-50CQ2U	TH-43CQ2U	
Screen Size (inch)		86	75	65	55	50	43		86	75	65	55	50	43	
FUNCTION BOARD															
12G-SDI Terminal Board	TY-SB01QS	-	-	-	-	-	-		-	-	-	-	-	-	
3G-SDI Terminal Board	TY-SB01SS	-	-	-	-	-	-		-	-	-	-	-	-	
Wireless Presentation System Receiver Board	TY-SB01WP	-	-	-	-	-	-		-	-	-	-	-	-	
MOUNTING OPTIONS															
Pedestal	TY-ST75PE9	-	Yes	-	-	-	-		-	Yes	Yes	-	-	-	
	TY-ST55PE9	-	-	Yes	-	-	-		-	-	-	Yes	-	-	
	TY-ST43PE9	-	-	-	-	-	-		-	-	-	-	Yes	Yes	
	TY-ST43PE8	-	-	-	Yes	Yes	Yes		-	-	-	-	-	-	
Wall-hanging Bracket	TY-WK98PV1	Yes	Yes	Yes	-	-	-		Yes	Yes	Yes	-	-	-	
Installation Mount (Landscape setting only)	TY-VK55LV2	-	-	-	-	-	-		-	-	-	-	-	-	
Pitch for Wall Hanging	800 x 500 (M8)	-	-	-	-	-	-		-	-	-	-	-	-	
(VESA compliant models)	800 x 400 (M8)	-	-	-	-	-	-		-	-	-	-	-	-	
	600 x 500 (M8)	-	-	-	-	-	-		-	-	-	-	-	-	
	600 x 400 (M8)	Yes	-	-	-	-	-		Yes	Yes	-	-	-	-	
	600 x 400 (M6)	-	Yes	-	-	-	-		-	-	-	-	-	-	
	400 x 400 (M8)	-	-	-	-	-	-		-	-	Yes	-	-	-	
	400 x 400 (M6)	-	-	Yes	-	Yes	-		-	-	-	Yes	Yes	-	
	400 x 200 (M6)	-	-	-	Yes	-	-		-	-	-	-	-	-	
	200 x 200 (M6)	-	-	-	-	-	Yes		-	-	-	-	-	Yes	
	100 x 100 (M4)	-	-	-	-	-	-		-	-	-	-	-	-	
OTHERS															
DIGITAL LINK Switcher	ET-YFB200G	-	-	-	-	-	-		-	-	-	-	-	-	
Digital Interface Box	ET-YFB100G	-	-	-	-	-	-		-	-	-	-	-	-	
Multi Window Processor	ET-MWP100 <sup>1</sup>	Yes	Yes	Yes	Yes	Yes	Yes		-	-	-	-	-	-	
SOFTWARE															
Multi Monitoring & Control Software Compatible		Yes	Yes	Yes	Yes	Yes	Yes		-	-	-	-	-	-	
Early Warning Software Compatible <sup>2</sup>		Yes	Yes	Yes	Yes	Yes	Yes		-	-	-	-	-	-	
Video Wall Manager		Yes	Yes	Yes	Yes	Yes	Yes		-	-	-	-	-	-	
Auto Display Adjustment Upgrade Kit (TY-VUK10)		-	-	-	-	-	-		-	-	-	-	-	-	
Screen Transfer (free)		Yes <sup>3</sup>	Yes <sup>3</sup>	Yes <sup>3</sup>	Yes <sup>3</sup>	Yes <sup>3</sup>	Yes <sup>3</sup>		-	-	-	-	-	-	
Content Management Software		Yes	Yes	Yes	Yes	Yes	Yes		-	-	-	-	-	-	

The specification has a case to change without notice.

1: The availability varies depending on the country. 2: The part number suffix may differ depending on the license type.

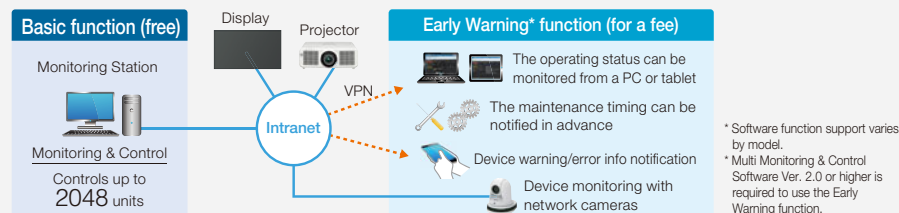
3: The Software Main Version 2.70 or later is required.

## Panasonic Software Line-up

### Multi Monitoring & Control Software



This free Panasonic software offers monitoring and control of up to 2,048 projectors and professional displays over a LAN network from a single PC to simplify management and maintenance while supporting stable operation. If you also purchase Early Warning Software (ET-SWA100), it will monitor the status of projectors and displays on the intranet and inform you of errors when it detects signs of trouble. This contributes to a lighter maintenance load and reduces costs.



### Early Warning Function (ET-SWA100)

- Maintenance Scheduling Suggestion
- Video Stop Detection Using a Network Camera

#### Early Warning function License

\* If you install "Multi Monitoring Control Software", a free 90 day trial.

For more information, please visit the PASS:

<https://panasonic.net/cns/prodisplays/pass>

If you install 'Multi Monitoring & Control Software,' a free 90-day trial is automatically available.



Captured image when an abnormality happens is stored

For information that is not included on this page, please visit the following website:  
<https://panasonic.net/cns/prodisplays/index.html>



## Optional Accessories

		Entry							Video Wall			Touch Screen		
		TH-98CQE1W	TH-86CQE1W	TH-75CQE1W	TH-65CQE1WA	TH-55CQE1W	TH-49CQE1W		TH-43CQE1W	TH-55VF2HW	TH-55VF2W	TH-55LFPV9U	TH-75BQ1W	TH-65BQ1W
Screen Size (inch)		98	86	75	65	55	49		43	55	55	55	75	65
FUNCTION BOARD														
12G-SDI Terminal Board	TY-SB01QS	-	-	-	-	-	-		-	-	-	-	Yes	Yes
3G-SDI Terminal Board	TY-SB01SS	-	-	-	-	-	-		-	-	-	-	Yes	Yes
Wireless Presentation System Receiver Board	TY-SB01WP	-	-	-	-	-	-		-	-	-	-	Yes	Yes
MOUNTING OPTIONS														
Pedestal	TY-ST75PE9	-	-	-	-	-	-		-	-	-	-	-	-
	TY-ST55PE9	-	-	-	-	-	-		-	-	-	-	-	-
	TY-ST43PE9	-	-	-	-	-	-		-	-	-	-	-	-
	TY-ST43PE8	-	-	-	-	-	-		-	-	-	-	-	-
Wall-hanging Bracket	TY-WK98PV1	-	-	-	-	-	-		-	-	-	-	-	-
Installation Mount (Landscape setting only)	TY-VK55LV2	-	-	-	-	-	-		-	Yes	Yes	Yes	-	-
Pitch for Wall Hanging (VESA compliant models)	800 x 500 (M8)	-	-	-	-	-	-		-	-	-	-	-	-
	800 x 400 (M8)	Yes	-	-	-	-	-		-	-	-	-	-	-
	600 x 500 (M8)	-	-	-	-	-	-		-	-	-	-	-	-
	600 x 400 (M8)	-	Yes	Yes	-	-	-		-	-	-	-	Yes	-
	600 x 400 (M6)	-	-	-	-	-	-		-	-	-	-	-	-
	400 x 400 (M8)	-	-	-	-	-	-		-	-	-	-	-	Yes
	400 x 400 (M6)	-	-	-	Yes	-	-		-	Yes	Yes	Yes	-	-
	400 x 200 (M6)	-	-	-	-	Yes	-		-	-	-	-	-	-
	200 x 200 (M6)	-	-	-	-	-	Yes		Yes	-	-	-	-	-
100 x 100 (M4)	-	-	-	-	-	-		-	-	-	-	-	-	
OTHERS														
DIGITAL LINK Switcher	ET-YFB200G	-	-	-	-	-	-		-	-	-	-	-	-
Digital Interface Box	ET-YFB100G	-	-	-	-	-	-		-	-	-	-	-	-
Multi Window Processor	ET-MWP100 <sup>1</sup>	-	-	-	-	-	-		-	Yes	Yes	Yes	Yes	Yes
SOFTWARE														
Multi Monitoring & Control Software Compatible		Yes	Yes	Yes	Yes	Yes	Yes		Yes	Yes	Yes	Yes	Yes	Yes
Early Warning Software Compatible <sup>2</sup>		Yes	Yes	Yes	Yes	Yes	Yes		Yes	Yes	Yes	Yes	Yes	Yes
Video Wall Manager		-	-	-	-	-	-		-	Yes	Yes	Yes	-	-
Auto Display Adjustment Upgrade Kit (TY-VUK10)		-	-	-	-	-	-		-	Yes	Yes	Yes	-	-
Screen Transfer (free)		-	-	-	-	-	-		-	-	-	-	Yes <sup>3</sup>	Yes <sup>3</sup>
Content Management Software		-	-	-	-	-	-		-	Yes	Yes	Yes	Yes	Yes

The specification has a case to change without notice.

1: The availability varies depending on the country. 2: The part number suffix may differ depending on the license type.

3: The Software Main Version 2.10 or later is required.

## Panasonic Software Line-up

### Screen Transfer

Screen Transfer is a software that allows a computer screen to be displayed onto one or more displays of devices that are connected by wired LAN. See the User's Manual for the operating method.

#### Main conditions when using Screen Transfer software

As verification is required in advance, please confirm the following conditions and contact your sales representative with regard to details.

1. Delivering to displays within the same network.
2. Using a wired LAN connection between the PC and display instead of a wireless LAN connection.
3. Meeting the operating environment of the PC (check the website for details.)

Even if your displays supports 4K images, the delivered image resolution will be up to 1920 x 1080 pixels.



Version	Ver. 2.0	Ver. 1.0
Number of device connections	Max. 64 units	Max. 8 units
Bandwidth	Approx. 10 Mbps (regardless of the number of connected devices)	Approx. 80 Mbps (when 8 devices are connected)
Auto reconnection	Yes	—
Delivery status check	Yes	—

Compatible Display: SQ1H Series, SQ1 Series, BQ1 Series, EQ1 Series

[https://panasonic.net/cns/prodisplays/download/software/scr\\_transfer/](https://panasonic.net/cns/prodisplays/download/software/scr_transfer/)

\* The number of connections and functions may vary depending on the model. Please refer to the web for details.

# Features

	High Brightness		Standard														
	TH-86SQ1HW	TH-75SQ1HW	TH-98SQ1W	TH-86SQ1W	TH-75SQ1W	TH-65SQ1WA		TH-55SQ1WA	TH-49SQ1WA	TH-98SQE1W	TH-86SQE1WA	TH-75SQE1W	TH-65SQE1W	TH-55SQE1W	TH-49SQE1W	TH-43SQE1W	TH-70SF2HU
Size (inch)	86	75	98	86	75	65		55	49	98	86	75	65	55	49	43	70
SPECIFICATIONS	DIGITAL LINK	Yes <sup>1</sup>	Yes <sup>1</sup>	Yes <sup>1</sup>	Yes <sup>1</sup>	Yes <sup>1</sup>	Yes <sup>1</sup>	Yes <sup>1</sup>	Yes <sup>1</sup>	-	-	-	-	-	-	-	Yes <sup>1</sup>
	Function Slot	Intel® SDM	Intel® SDM	Intel® SDM	Intel® SDM	Intel® SDM	Intel® SDM	Intel® SDM	Intel® SDM	Intel® SDM	Intel® SDM	Intel® SDM	Intel® SDM	Intel® SDM	Intel® SDM	Intel® SDM	-
	Operating Time (h/day)	24	24	24	24	24	24	24	24	24	24	24	24	24	24	24	24
	Protective Glass	-	-	-	-	-	-	-	-	-	-	-	-	-	-	-	-
	Touch Operation	-	-	-	-	-	-	-	-	-	-	-	-	-	-	-	-
	Wireless Function	-	-	-	-	-	-	-	-	Yes	Yes	Yes	Yes	Yes	Yes	Yes	-
IMAGE QUALITY	Color Management	12-axis	12-axis	12-axis	12-axis	12-axis	12-axis	12-axis	12-axis	-	-	-	-	-	-	-	6-axis
	Color Enhancement	Yes	Yes	Yes	Yes	Yes	Yes	Yes	Yes	-	-	-	-	-	-	-	Yes
	Dynamic Backlight	Yes	Yes	Yes	Yes	Yes	Yes	Yes	Yes	-	-	-	-	-	-	-	Yes
	Dynamic Contrast	Yes	Yes	Yes	Yes	Yes	Yes	Yes	Yes	Yes	Yes	Yes	Yes	Yes	Yes	Yes	Yes
	Frame Creation	Yes	-	Yes	Yes	Yes	-	-	-	-	-	-	-	-	-	-	-
	Gradation Smoother	Yes	Yes	Yes	Yes	Yes	Yes	Yes	Yes	-	-	-	-	-	-	-	Yes
	Local Dimming	Yes	Yes	Yes	Yes	Yes	Yes	Yes	Yes	-	-	-	-	-	-	-	-
	Refine Enhancer	Yes	Yes	Yes	Yes	Yes	Yes	Yes	Yes	-	-	-	-	-	-	-	Yes
RELIABILITY	Failover/Failback	Yes	Yes	Yes	Yes	Yes	Yes	Yes	Yes	-	-	-	-	-	-	-	Yes
	Input Search/No Signal Auto Switch Setting/Input Signal Search	Yes	Yes	Yes	Yes	Yes	Yes	Yes	Yes	Yes	Yes	Yes	Yes	Yes	Yes	Yes	Yes
EXPANDABILITY	Audio Input Select (Switching)	Yes	Yes	Yes	Yes	Yes	Yes	Yes	Yes	-	-	-	-	-	-	-	Yes
	Cisco Webex Certified	-	-	-	-	-	-	-	-	-	-	-	-	-	-	-	-
	LAN Control (Network Control)	Yes	Yes	Yes	Yes	Yes	Yes	Yes	Yes	Yes	Yes	Yes	Yes	Yes	Yes	Yes	Yes
	Memory Viewer/Auto Play	Yes	Yes	Yes	Yes	Yes	Yes	Yes	Yes	Yes <sup>5</sup>	Yes <sup>5</sup>	Yes <sup>5</sup>	Yes <sup>5</sup>	Yes <sup>5</sup>	Yes <sup>5</sup>	Yes <sup>5</sup>	Yes
	PJLink™ Protocol	Yes	Yes	Yes	Yes	Yes	Yes	Yes	Yes	Yes	Yes	Yes	Yes	Yes	Yes	Yes	Yes
	Power Management Mode/Eco Mode	Yes	Yes	Yes	Yes	Yes	Yes	Yes	Yes	Yes	Yes	Yes	Yes	Yes	Yes	Yes	Yes
	Remote ID Control (Function)	Yes	Yes	Yes	Yes	Yes	Yes	Yes	Yes	-	-	-	-	-	-	-	Yes
	Serial ID Control (Function)	Yes	Yes	Yes	Yes	Yes	Yes	Yes	Yes	Yes	Yes	Yes	Yes	Yes	Yes	Yes	Yes
	USB Media Player	Yes	Yes	Yes	Yes	Yes	Yes	Yes	Yes	Yes <sup>5</sup>	Yes <sup>5</sup>	Yes <sup>5</sup>	Yes <sup>5</sup>	Yes <sup>5</sup>	Yes <sup>5</sup>	Yes <sup>5</sup>	Yes
CONVENIENCE	Web Browser Control	Yes	Yes	Yes	Yes	Yes	Yes	Yes	Yes	-	-	-	-	-	-	-	Yes
	Auto Setup	Yes	Yes	Yes	Yes	Yes	Yes	Yes	Yes	Yes	Yes	Yes	Yes	Yes	Yes	Yes	Yes
	Built-in Whiteboard	-	-	-	-	-	-	-	-	-	-	-	-	-	-	-	-
	Conference Audio Mode	Yes	Yes	Yes <sup>6</sup>	Yes <sup>6</sup>	Yes	Yes	Yes	Yes	-	-	-	-	-	-	-	-
	Data Cloning	USB/LAN	USB/LAN	USB/LAN	USB/LAN	USB/LAN	USB/LAN	USB/LAN	USB/LAN	USB/LAN	USB/LAN	USB/LAN	USB/LAN	USB/LAN	USB/LAN	USB/LAN	USB/LAN
	HDMI CEC	Yes	Yes	Yes	Yes	Yes	Yes	Yes	Yes	Yes	Yes	Yes	Yes	Yes	Yes	Yes	Yes
	Multi Input Display <sup>7</sup>	Yes	Yes	Yes	Yes	Yes	Yes	Yes	Yes	-	-	-	-	-	-	-	-
	No Activity Power Off	Yes	Yes	Yes	Yes	Yes	Yes	Yes	Yes	Yes	Yes	Yes	Yes	Yes	Yes	Yes	Yes
	Off Timer Setting	Yes	Yes	Yes	Yes	Yes	Yes	Yes	Yes	Yes	Yes	Yes	Yes	Yes	Yes	Yes	Yes
	Power on Screen Delay	Yes	Yes	Yes	Yes	Yes	Yes	Yes	Yes	Yes	Yes	Yes	Yes	Yes	Yes	Yes	Yes
INSTALLATION	Set up Timer	Yes	Yes	Yes	Yes	Yes	Yes	Yes	Yes	Yes	Yes	Yes	Yes	Yes	Yes	Yes	Yes
	Startup Image Settings/No signal image settings	Yes	Yes	Yes	Yes	Yes	Yes	Yes	Yes	-	-	-	-	-	-	-	Yes
	Daisy Chain Connection	Yes	Yes	Yes	Yes	Yes	Yes	Yes	Yes	-	-	-	-	-	-	-	Yes
	Fan-less Design	-	-	Yes	Yes	Yes	Yes	Yes	Yes	Yes	Yes	Yes	Yes	Yes	Yes	Yes	Yes
	Multi Screen (Multi Display Setting) <sup>8</sup>	Yes	Yes	Yes	Yes	Yes	Yes	Yes	Yes	Yes	Yes	Yes	Yes	Yes	Yes	Yes	Yes
	Portrait	Yes	Yes	Yes	Yes	Yes	Yes	Yes	Yes	Yes	Yes	Yes	Yes	Yes	Yes	Yes	Yes
	Portrait Zoom Mode	Yes	Yes	Yes <sup>9</sup>	Yes <sup>9</sup>	Yes	Yes	Yes	Yes	-	-	-	-	-	-	-	-
CONTROL	USB Memory Network Setting	Yes	Yes	Yes	Yes	Yes	Yes	Yes	Yes	Yes	Yes	Yes	Yes	Yes	Yes	Yes	Yes
	Crestron Connected™	Yes	Yes	Yes	Yes	Yes	Yes	Yes	Yes	Yes	Yes	Yes	Yes	Yes	Yes	Yes	Yes
	AMX.D.D.	Yes	Yes	Yes	Yes	Yes	Yes	Yes	Yes	-	-	-	-	-	-	-	Yes
	Extron XTP	Yes	Yes	Yes	Yes	Yes	Yes	Yes	Yes	-	-	-	-	-	-	-	Yes

1: Long Reach Mode compatible. 2: Multi Dynamic Backlight 3: Local Dimming on LFD9 Series is always set.  
4: This function is compatible with the Software Main Version 2.2000 or later. Please contact your sales representative with regard to details.  
5: The playable application format, GUI, and operation procedure for the SQE1, CQE1 Series' Media Player function areas different from of other models.  
6: This function on the 98/86-inch models is compatible with the Software Main Version 4.0000 or later.  
7: The number of units that can be set as a group varies depending on the model. For details, see the operating instructions of each model.  
8: There are restrictions on the input signal and 4-Input Multi Display function. 3G-SDI input and 4K images are not supported by the 4-Input Multi Display function.  
For details, see the operating instructions of each model.  
9: These functions on the 98/86-inch models are compatible with the Software Main Version 3.0000 or later. Please contact your sales representative with regard to details.

Note: The specifications may vary depending on the model, even for the same function.  
For details, see the operating instructions of each model.

# Features

Features		Entry													
		TH-86EQ1W	TH-75EQ1W	TH-65EQ1U	TH-55EQ1U	TH-50EQ1U	TH-43EQ1U		TH-86CQ2U	TH-75CQ2U	TH-65CQ2U	TH-55CQ2U	TH-50CQ2U	TH-43CQ2U	
Size (inch)		86	75	65	55	50	43		86	75	65	55	50	43	
SPECIFICATIONS	DIGITAL LINK	-	-	-	-	-	-		-	-	-	-	-	-	
	Function Slot	-	-	-	-	-	-		-	-	-	-	-	-	
	Operating Time (h/day)	24	24	18	18	18	18		16	16	16	16	16	16	
	Protective Glass	-	-	-	-	-	-		-	-	-	-	-	-	
	Touch Operation	-	-	-	-	-	-		-	-	-	-	-	-	
	Wireless Function	-	-	-	-	-	-		-	-	-	-	-	-	
IMAGE QUALITY	Color Management	6-axis							-	-	-	-	-	-	
	Color Enhancement	Yes	Yes	Yes	Yes	Yes	Yes		-	-	-	-	-	-	
	Dynamic Backlight	Yes	Yes	Yes	Yes	Yes	Yes		Yes	Yes	Yes	Yes	Yes	Yes	
	Dynamic Contrast	Yes	Yes	Yes	Yes	Yes	Yes		Yes	Yes	Yes	Yes	Yes	Yes	
	Frame Creation	Yes	Yes	-	-	-	-		-	-	-	-	-	-	
	Gradation Smoother	Yes	Yes	Yes	Yes	Yes	Yes		-	-	-	-	-	-	
	Local Dimming	Yes	Yes	-	-	-	-		-	-	-	-	-	-	
	Refine Enhancer	Yes	Yes	Yes	Yes	Yes	Yes		-	-	-	-	-	-	
RELIABILITY	Failover/Failback	Yes	Yes	Yes	Yes	Yes	Yes		-	-	-	-	-	-	
	Input Search/No Signal Auto Switch Setting/Input Signal Search	Yes	Yes	Yes	Yes	Yes	Yes		-	-	-	-	-	-	
EXPANDABILITY	Audio Input Select (Switching)	Yes	Yes	Yes	Yes	Yes	Yes		-	-	-	-	-	-	
	Cisco Webex Certified	Yes <sup>4</sup>	Yes <sup>4</sup>	Yes <sup>4</sup>	Yes <sup>4</sup>	Yes <sup>4</sup>	Yes <sup>4</sup>		-	-	-	-	-	-	
	LAN Control (Network Control)	Yes	Yes	Yes	Yes	Yes	Yes		Yes	Yes	Yes	Yes	Yes	Yes	
	Memory Viewer/Auto Play	Yes	Yes	Yes	Yes	Yes	Yes		Yes	Yes	Yes	Yes	Yes	Yes	
	PJLink™ Protocol	Yes	Yes	Yes	Yes	Yes	Yes		Yes	Yes	Yes	Yes	Yes	Yes	
	Power Management Mode/Eco Mode	Yes	Yes	Yes	Yes	Yes	Yes		Yes	Yes	Yes	Yes	Yes	Yes	
	Remote ID Control (Function)	Yes	Yes	Yes	Yes	Yes	Yes		-	-	-	-	-	-	
	Serial ID Control (Function)	Yes	Yes	Yes	Yes	Yes	Yes		-	-	-	-	-	-	
	USB Media Player	Yes	Yes	Yes	Yes	Yes	Yes		-	-	-	-	-	-	
	Web Browser Control	Yes	Yes	Yes	Yes	Yes	Yes		-	-	-	-	-	-	
CONVENIENCE	Auto Setup	Yes	Yes	Yes	Yes	Yes	Yes		Yes	Yes	Yes	Yes	Yes	Yes	
	Built-in Whiteboard	-	-	-	-	-	-		-	-	-	-	-	-	
	Conference Audio Mode	Yes <sup>5</sup>	Yes <sup>5</sup>	Yes <sup>5</sup>	Yes <sup>5</sup>	Yes <sup>5</sup>	Yes <sup>5</sup>		-	-	-	-	-	-	
	Data Cloning	USB/LAN							-	-	-	-	-	-	
	HDMI CEC	Yes	Yes	Yes	Yes	Yes	Yes		Yes	Yes	Yes	Yes	Yes	Yes	
	Multi Input Display <sup>7</sup>	-	-	-	-	-	-		-	-	-	-	-	-	
	No Activity Power Off	Yes	Yes	Yes	Yes	Yes	Yes		-	-	-	-	-	-	
	Off Timer Setting	Yes	Yes	Yes	Yes	Yes	Yes		-	-	-	-	-	-	
	Power on Screen Delay	Yes	Yes	Yes	Yes	Yes	Yes		-	-	-	-	-	-	
	Set up Timer	Yes	Yes	Yes	Yes	Yes	Yes		Yes	Yes	Yes	Yes	Yes	Yes	
Startup Image Settings/No signal image settings	Yes	Yes	Yes	Yes	Yes	Yes		-	-	-	-	-	-		
INSTALLATION	Daisy Chain Connection	Yes (IR only)							-	-	-	-	-	-	
	Fan-less Design	Yes	Yes	Yes	Yes	Yes	Yes		Yes	Yes	Yes	Yes	Yes	Yes	
	Multi Screen (Multi Display Setting) <sup>8</sup>	Yes	Yes	Yes	Yes	Yes	Yes		-	-	-	-	-	-	
	Portrait	Yes	Yes	Yes	Yes	Yes	Yes		-	-	-	-	-	-	
	Portrait Zoom Mode	Yes <sup>5</sup>	Yes <sup>5</sup>	Yes <sup>5</sup>	Yes <sup>5</sup>	Yes <sup>5</sup>	Yes <sup>5</sup>		-	-	-	-	-	-	
	USB Memory Network Setting	Yes	Yes	Yes	Yes	Yes	Yes		-	-	-	-	-	-	
CONTROL	Crestron Connected™	Yes	Yes	Yes	Yes	Yes	Yes		-	-	-	-	-	-	
	AMX.D.D.	Yes	Yes	Yes	Yes	Yes	Yes		-	-	-	-	-	-	
	Extron XTP	-	-	-	-	-	-		-	-	-	-	-	-	

1: Long Reach Mode compatible. 2: Multi Dynamic Backlight 3: Local Dimming on LTV9 Series is always set.

4: This function is compatible with the Software Main Version 2.2000 or later. Please contact your sales representative with regard to details.

5: The playable application format, GUI, and operation procedure for the SQE1, CQE1 Series' Media Player function areas different from of other models.

6: This function on the 98/86-inch models is compatible with the Software Main Version 4.0000 or later.

7: The number of units that can be set as a group varies depending on the model. For details, see the operating instructions of each model.

8: There are restrictions on the input signal and 4-Input Multi Display function. 3G-SDI input and 4K images are not supported by the 4-Input Multi Display function. For details, see the operating instructions of each model.

9: These functions on the 98/86-inch models are compatible with the Software Main Version 3.0000 or later. Please contact your sales representative with regard to details.

Note: The specifications may vary depending on the model, even for the same function. For details, see the operating instructions of each model.

# Features

		Entry							Video Wall			Touch Screen	
		TH-98CQE1W	TH-86CQE1W	TH-75CQE1W	TH-65CQE1WA	TH-55CQE1W	TH-49CQE1W	TH-43CQE1W	TH-55VF2HW	TH-55VF2W	TH-55LFV9U	TH-75BQ1W	TH-65BQ1W
Size (inch)		98	86	75	65	55	49	43	55	55	55	75	65
SPECIFICATIONS	DIGITAL LINK	-	-	-	-	-	-	-	Yes	Yes	-	Yes	Yes
	Function Slot	-	-	-	-	-	-	-	-	-	-	Intel® SDM	-
	Operating Time (h/day)	24	16	16	16	16	16	16	24	24	24	18	18
	Protective Glass	-	-	-	-	-	-	-	-	-	-	Yes	Yes
	Touch Operation	-	-	-	-	-	-	-	-	-	-	Yes	Yes
	Wireless Function	Yes	Yes	Yes	Yes	Yes	Yes	Yes	-	-	-	-	-
IMAGE QUALITY	Color Management	-	-	-	-	-	-	-	-	-	-	12-Axis	
	Color Enhancement	-	-	-	-	-	-	-	Yes	Yes	Yes	Yes	Yes
	Dynamic Backlight	-	-	-	-	-	-	-	Yes <sup>2</sup>	Yes <sup>2</sup>	-	Yes	Yes
	Dynamic Contrast	Yes	Yes	Yes	Yes	Yes	Yes	Yes	Yes	Yes	Yes	Yes	Yes
	Frame Creation	-	-	-	-	-	-	-	-	-	-	-	-
	Gradation Smoother	-	-	-	-	-	-	-	-	-	-	Yes	Yes
	Local Dimming	-	-	-	-	-	-	-	Yes	Yes	Yes <sup>3</sup>	-	-
RELIABILITY	Refine Enhancer	-	-	-	-	-	-	-	Yes	Yes	-	Yes	Yes
	Failover/Failback	-	-	-	-	-	-	-	Yes	Yes	Yes	Yes	Yes
EXPANDABILITY	Input Search/No Signal Auto Switch Setting/Input Signal Search	Yes	Yes	Yes	Yes	Yes	Yes	Yes	Yes	Yes	Yes	Yes	Yes
	Audio Input Select (Switching)	-	-	-	-	-	-	-	Yes	Yes	-	Yes	Yes
	Cisco Webex Certified	-	-	-	-	-	-	-	-	-	-	-	-
	LAN Control (Network Control)	Yes	Yes	Yes	Yes	Yes	Yes	Yes	Yes	Yes	Yes	Yes	Yes
	Memory Viewer/Auto Play	Yes <sup>5</sup>	Yes <sup>5</sup>	Yes <sup>5</sup>	Yes <sup>5</sup>	Yes <sup>5</sup>	Yes <sup>5</sup>	Yes <sup>5</sup>	-	-	-	Yes	Yes
	PJLink™ Protocol	Yes	Yes	Yes	Yes	Yes	Yes	Yes	Yes	Yes	Yes	Yes	Yes
	Power Management Mode/Eco Mode	Yes	Yes	Yes	Yes	Yes	Yes	Yes	Yes	Yes	Yes	Yes	Yes
	Remote ID Control (Function)	-	-	-	-	-	-	-	Yes	Yes	-	Yes	Yes
	Serial ID Control (Function)	Yes	Yes	Yes	Yes	Yes	Yes	Yes	Yes	Yes	Yes	Yes	Yes
	USB Media Player	Yes	Yes	Yes	Yes	Yes	Yes	Yes	Yes	Yes	-	Yes	Yes
CONVENIENCE	Web Browser Control	-	-	-	-	-	-	-	Yes	Yes	Yes	Yes	Yes
	Auto Setup	Yes	Yes	Yes	Yes	Yes	Yes	Yes	Yes	Yes	-	Yes	Yes
	Built-in Whiteboard	-	-	-	-	-	-	-	-	-	-	Yes	Yes
	Conference Audio Mode	-	-	-	-	-	-	-	-	-	-	Yes	Yes
	Data Cloning	USB							USB	USB/LAN	USB/LAN	-	USB/LAN
	HDMI CEC	Yes	Yes	Yes	Yes	Yes	Yes	Yes	-	-	-	Yes	Yes
	Multi Input Display <sup>7</sup>	-	-	-	-	-	-	-	-	-	-	Yes	Yes
	No Activity Power Off	Yes	Yes	Yes	Yes	Yes	Yes	Yes	Yes	Yes	-	Yes	Yes
	Off Timer Setting	Yes	Yes	Yes	Yes	Yes	Yes	Yes	Yes	Yes	Yes	Yes	Yes
	Power on Screen Delay	Yes	Yes	Yes	Yes	Yes	Yes	Yes	Yes	Yes	Yes	Yes	Yes
INSTALLATION	Set up Timer	Yes	Yes	Yes	Yes	Yes	Yes	Yes	Yes	Yes	-	Yes	Yes
	Startup Image Settings/No signal image settings	-	-	-	-	-	-	-	Yes	Yes	-	Yes	Yes
	Daisy Chain Connection	-	-	-	-	-	-	-	Yes	Yes	Yes	-	-
	Fan-less Design	Yes	Yes	Yes	Yes	Yes	Yes	Yes	Yes	Yes	-	Yes	Yes
	Multi Screen (Multi Display Setting) <sup>8</sup>	Yes	Yes	Yes	Yes	Yes	Yes	Yes	Yes	Yes	Yes	Yes	Yes
	Portrait	-	-	-	-	-	-	-	-	Yes	Yes	Yes	Yes
CONTROL	Portrait Zoom Mode	-	-	-	-	-	-	-	-	-	-	-	-
	USB Memory Network Setting	-	-	-	-	-	-	-	Yes	Yes	-	Yes	Yes
	Crestron Connected™	Yes	Yes	Yes	Yes	Yes	Yes	Yes	Yes	Yes	-	Yes	Yes
	AMX.D.D.	-	-	-	-	-	-	-	Yes	Yes	-	Yes	Yes
Extron XTP		-	-	-	-	-	-	-	Yes	Yes	-	-	-

1: Long Reach Mode compatible. 2: Multi Dynamic Backlight 3: Local Dimming on LFV9 Series is always set.

4: This function is compatible with the Software Main Version 2.2000 or later. Please contact your sales representative with regard to details.

5: The playable application format, GUI, and operation procedure for the SQE1, CQE1 Series' Media Player function areas different from of other models.

6: This function on the 98/86-inch models is compatible with the Software Main Version 4.0000 or later.

7: The number of units that can be set as a group varies depending on the model. For details, see the operating instructions of each model

8: There are restrictions on the input signal and 4-Input Multi Display function. 3G-SDI input and 4K images are not supported by the 4-Input Multi Display function. For details, see the operating instructions of each model.

9: These functions on the 98/86-inch models are compatible with the Software Main Version 3.0000 or later. Please contact your sales representative with regard to details.

Note: The specifications may vary depending on the model, even for the same function. For details, see the operating instructions of each model.