



AMAZING **BOARDROOM EXPERIENCES**

Support dynamic meetings to bring business to the next level.



Parallax Pure

Parallax® Pure is a True Optical ALR solution that features an optical lens system to reject light. Multiple surface layers absorb light while one special layer is shaped like a microscopic saw-tooth to block light from above, preserving high contrast images in brightly lit environments.

USE PARALLAX PURE WHEN:

- The most ambient light rejection is needed in an installation
- Sizes are up to 120" diagonal in 16:9
- Image quality and resolution are critical
- A variety of gain types may be needed to accommodate projector models or lenses

SCREEN SURFACES

96% ALR
PARALLAX PURE 0.8
Half Angle: 85° Gain: 0.8
Recommended for laser projection

96% ALR
PARALLAX PURE 2.3
Half Angle: 23° Gain: 2.3
Suitable for laser projection

95% ALR
PARALLAX PURE UST 0.45
Half Angle: 80° Gain: 0.45
Recommended for laser projection



Parallax Stratos

Parallax Stratos is a Contrast Based ALR solution. The gray color and other proprietary design elements in the surface combine to absorb ambient light rather than reflect it. Engineered as a high value surface for large scale installations, Parallax Stratos maintains and enhances image contrast for viewers.

USE PARALLAX STRATOS WHEN:

- High ambient light rejection is needed in an installation
- Sizes are larger than 120" diagonal in 16:9
- Color and contrast need to be enhanced in the projected image
- A single surface solution with a variety of product types can solve the basic ambient light rejection needs of the project

SCREEN SURFACES



PARALLAX STRATOS 1.0
Half Angle: 30° Gain: 1.0
Suitable for laser projection



HD Progressive

HD Progressive projection surfaces are designed to perfectly reflect and preserve the image being projected for ProAV installations. This screen surface technology is designed for high-resolution and laser projection, creating the most crisp, clear image in the industry. Ensure a future proof install with 16K-ready surfaces.

16K-READY SURFACE OPTIONS



HD PROGRESSIVE 0.9
Half Angle: 85° Gain: 0.9
Recommended for laser projection



HD PROGRESSIVE 0.6
Half Angle: 85° Gain: 0.6
Recommended for laser projection



HD PROGRESSIVE 1.1
Half Angle: 85° Gain: 1.1
Recommended for laser projection



HD PROGRESSIVE 1.1 CONTRAST
Half Angle: 60° Gain: 1.1
Recommended for laser projection



HD PROGRESSIVE 1.3
Half Angle: 75° Gain: 1.3
Suitable for laser projection



DA-LITE®



Wireline Advantage

By using thin steel cables up to 29' instead of black drop, the Wireline™ Advantage® almost invisibly suspends content at just the right viewing height, leaving the architecture of the room exposed for stunning results. Adding to the aesthetics, the Wireline comes with ceiling trim already in place. Available sizes include 133" to 226" diagonals.

16K-READY SURFACE OPTIONS



HD PROGRESSIVE 0.9

Half Angle: 85° Gain: 0.9
Recommended for laser projection



HD PROGRESSIVE 0.6

Half Angle: 85° Gain: 0.6
Recommended for laser projection



HD PROGRESSIVE 1.1

Half Angle: 85° Gain: 1.1
Recommended for laser projection



HD PROGRESSIVE 1.1 CONTRAST

Half Angle: 60° Gain: 1.1
Recommended for laser projection



HD PROGRESSIVE 1.3

Half Angle: 75° Gain: 1.3
Suitable for laser projection



DUAL VISION

Half Angle: 65° Gain: 0.9
Recommended for laser projection

4K-READY SURFACE OPTION



PARALLAX STRATOS 1.0

Half Angle: 30° Gain: 1.0
Suitable for laser projection



FullVision

A border-less screen with a modern aesthetic that blends into its environment when not in use, FullVision is a fixed frame projection screen that enables the entire surface to be used for projection. Modern and low-profile, FullVision is 16K-ready and future proof with HD Progressive surface options. Aesthetic forward and designed for rooms that require the AV blend into the environment when not in use and deliver the very best in projection when the projector turns on.

16K-READY SURFACE OPTIONS



HD PROGRESSIVE 0.9

Half Angle: 85° Gain: 0.9
Recommended for laser projection



HD PROGRESSIVE 0.6

Half Angle: 85° Gain: 0.6
Recommended for laser projection



HD PROGRESSIVE 1.1

Half Angle: 85° Gain: 1.1
Recommended for laser projection



HD PROGRESSIVE 1.1 CONTRAST

Half Angle: 60° Gain: 1.1
Recommended for laser projection



HD PROGRESSIVE 1.3

Half Angle: 75° Gain: 1.3
Suitable for laser projection



DescenderPro

DescenderPro is the first Da-Lite ceiling recessed screen to be stocked and available for immediate shipment. Its compact housing is up to a 1/3 smaller than similar electric screens for easy installation in spaces with structural limitations. Available in standard sizes and up to 164" diagonal. Internal junction box, silent motor and low-voltage control (LVC) are standard.

16K-READY SURFACE OPTIONS



HD PROGRESSIVE 0.9

Half Angle: 85° Gain: 0.9
Recommended for laser projection



HD PROGRESSIVE 1.1

Half Angle: 85° Gain: 1.1
Recommended for laser projection



Wireline Advantage

Large Venue Electric Screen with Steel Cables to Lower Screen Surface

DA-LITE



Tensioned Advantage Deluxe Electrol

Ceiling Recessed Electric Screen with Automatic Closure Door, Plenum Rated Aluminum Case and Trim Flange

DA-LITE



Tensioned Advantage Electrol

Ceiling Recessed Electric Screen with Plenum Rated Aluminum Case and Trim Flange

DA-LITE



Tensioned Contour Electrol

Wall or Ceiling Mounted Electric Screen with Simple Installation

DA-LITE



Tensioned DescenderPro

Ceiling Recessed Electric Screen Tensioned, Plenum Rated Case and Trim Flange

DA-LITE



DescenderPro

Ceiling Recessed Electric Screen Non-tensioned, Plenum Rated Case and Trim Flange

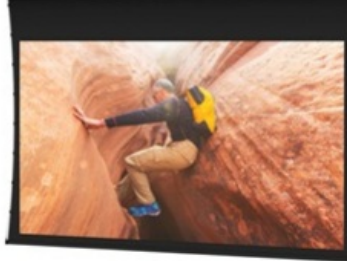
DA-LITE



Tensioned Large Advantage Deluxe Electrol

Ceiling Recessed Electric Screen with Automatic Closure Door, Plenum Rated Aluminum Case and Trim Flange

DA-LITE



Tensioned Large Advantage Electrol

Ceiling Recessed Electric Screen with Plenum Rated Aluminum Case and Trim Flange

DA-LITE



ViewShare Tensioned Advantage Electrol

Ceiling Recessed Electric Screen with Integrated HD Web Camera, Plenum Rated Aluminum Case and Trim Flange

DA-LITE



Tensioned Cosmopolitan Electrol

Wall or Ceiling Mounted Electric Screen

DA-LITE



Tensioned Large Cosmopolitan Electrol

Wall or Ceiling Mounted Electric Screen

DA-LITE



Tensioned Professional Electrol

Ceiling Recessed Electric Screen with Wooden Case

DA-LITE



Tensioned Conference Electrol

Ceiling Recessed Electric Screen with Integrated Video Conferencing Camera Shelf

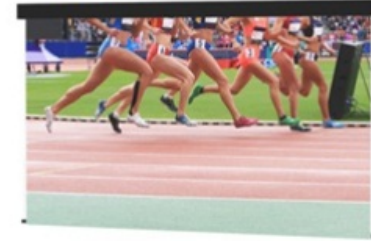
DA-LITE



Studio Electrol

Large Venue Electric Screen with Sizes up to 32' Wide

DA-LITE



Arena Electrol

Large Venue Electric Screen with Sizes up to 39' Wide

DA-LITE



Ascender Electrol

Floor Mounted Electric Screen

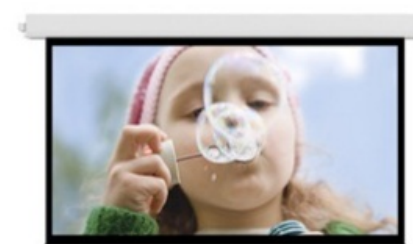
DA-LITE



Advantage Deluxe Electrol

Ceiling Recessed Electric Screen with Automatic Closure Door, Plenum Rated Aluminum Case and Trim Flange

DA-LITE



Advantage Electrol

Ceiling Recessed Electric Screen with Plenum Rated Aluminum Case and Trim Flange

DA-LITE

Screen Type: Electric



Contour Electrol

Wall or Ceiling Mounted Electric Screen with Simple Installation

DA-LITE



Large Advantage Deluxe Electrol

Ceiling Recessed Electric Screen with Automatic Closure Door, Plenum Rated Aluminum Case and Trim Flange

DA-LITE



Large Advantage Electrol

Ceiling Recessed Electric Screen with Plenum Rated Aluminum Case and Trim Flange

DA-LITE



ViewShare Advantage Electrol

Ceiling Recessed Electric Screen with Integrated HD Web Camera, Plenum Rated Aluminum Case and Trim Flange

DA-LITE



Cosmopolitan Electrol

Wall or Ceiling Mounted Electric Screen

DA-LITE



Large Cosmopolitan Electrol

Wall or Ceiling Mounted Electric Screen

DA-LITE



Professional Electrol

Ceiling Recessed Electric Screen with Wooden Case

DA-LITE



Motorized Scenic Roller

Large Venue Electric Screen

DA-LITE



Slimline Electrol

Wall or Ceiling Mounted Electric Screen with Compact Case Design and Power Cord with Inline Switch

DA-LITE



Designer Contour Electrol

Wall or Ceiling Mounted Electric Screen with Smaller Case Design (Available up to 8' Wide)

DA-LITE

Screen Type: Electric



Parallax

Ambient Light Rejecting Fixed Frame Screen with 2½" Beveled Frame

DA-LITE



Parallax Thin

Ambient Light Rejecting Fixed Frame Screen with Thin 3/8" Bezel

DA-LITE



IDEA Screen

Dry Erase Projection Screen for use with Interactive Projectors

DA-LITE



FullVision

Border-less Fixed Frame Screen with Low Profile

DA-LITE



IDEA Panoramic

Multi-Panel Dry Erase Projection Screen for use with Interactive Projectors

DA-LITE



UTB Contour

Fixed Frame Screen with Ultra Thin Bezel

DA-LITE



Cinema Contour

Fixed Frame Screen with 3" Wide Beveled Frame

DA-LITE



Da-Snap

Fixed Frame Screen with 1½" Square Frame

DA-LITE



Lace and Grommet Screen Surfaces

For Use With Series 200 and Series 300 Frames or Custom Installations

DA-LITE



Series 200 Lace and Grommet Frame

Fixed Frame Screen with 2" Diameter Tubing for Large Venues

DA-LITE



Curved Series 200 Lace and Grommet Frame

Curved Fixed Frame Screen with 2" Diameter Tubing for Large Venues

DA-LITE



Series 300 Lace and Grommet Frame

Fixed Frame Screen with 3" Diameter Tubing for Large Venues

DA-LITE



Curved Series 300 Lace and Grommet Frame

Curved Fixed Frame Screen with 3" Diameter Tubing for Large Venues

DA-LITE



Integrated Interactive System (AN3)

AN3 Series for Epson Brightlink Pro

DA-LITE



Perm-Wall

Fixed Frame Screen

DA-LITE



Imager

Fixed Frame Screen with 2" Rounded Frame

DA-LITE



Advantage Manual With CSR (Ceiling Recessed)

Ceiling Recessed Manual Screen with
Plenum Rated Aluminum Case and
Controlled Screen Return

DA-LITE



Model C with CSR

Wall or Ceiling Mounted Manual Screen
with Controlled Screen Return for Large
Rooms

DA-LITE



Designer Contour Manual with CSR

Wall or Ceiling Mounted Manual Screen
with Simple Installation and Controlled
Screen Return

DA-LITE



Model B with CSR

Wall or Ceiling Mounted Manual Screen
with Controlled Screen Return for Medium
Sized Rooms

DA-LITE



Scenic Roller

Large Venue Manual Screen with Rope
and Pulley System

DA-LITE



Model C

Wall or Ceiling Mounted Manual Screen for
Large Rooms

DA-LITE



Model B

Wall or Ceiling Mounted Manual Screen for
Medium Sized Rooms

DA-LITE



Fast-Fold Deluxe Screen System

Portable Folding Frame Screen

DA-LITE



Heavy Duty Fast-Fold Deluxe Screen System

Portable Folding Frame Screen

DA-LITE



Fast-Fold Truss Frame Screens

Portable Folding Frame Screen

DA-LITE



Floor Model C

Heavy-Duty Pull-Up Screen for Rental, Stage and Hospitality

DA-LITE



Picture King

Heavy-Duty Tripod Portable Screen for Daily Use

DA-LITE



Deluxe Insta-Theater

Light-Weight Portable Screen for Travel or Business

DA-LITE



Versatol

Light-Weight Tripod Portable Screen

DA-LITE



Fast-Fold Mini-Fold

Table Top Folding Frame Screen

DA-LITE



Presenter with Carrying Case

Tabletop Portable Screen

DA-LITE



Flex Plex

Acrylic Rear Projection Screen That Ships in a Roll

DA-LITE



Da-Plex

Rigid Rear Projection Screen with Acrylic Lightweight Substrate

DA-LITE



Holo Screen

Holographic Screen for Digital Signage

DA-LITE



Da-Glas

Rigid Rear Projection Screen with Glass Substrate

DA-LITE



Audio Visual Solutions

- Consulting • Design
- Installations • Sales
- Maintenance and Hire

 **1300 658 986**

Unit 13, 45 Normanby Road, Notting Hill VIC 3168

www.savetimevisuals.com.au